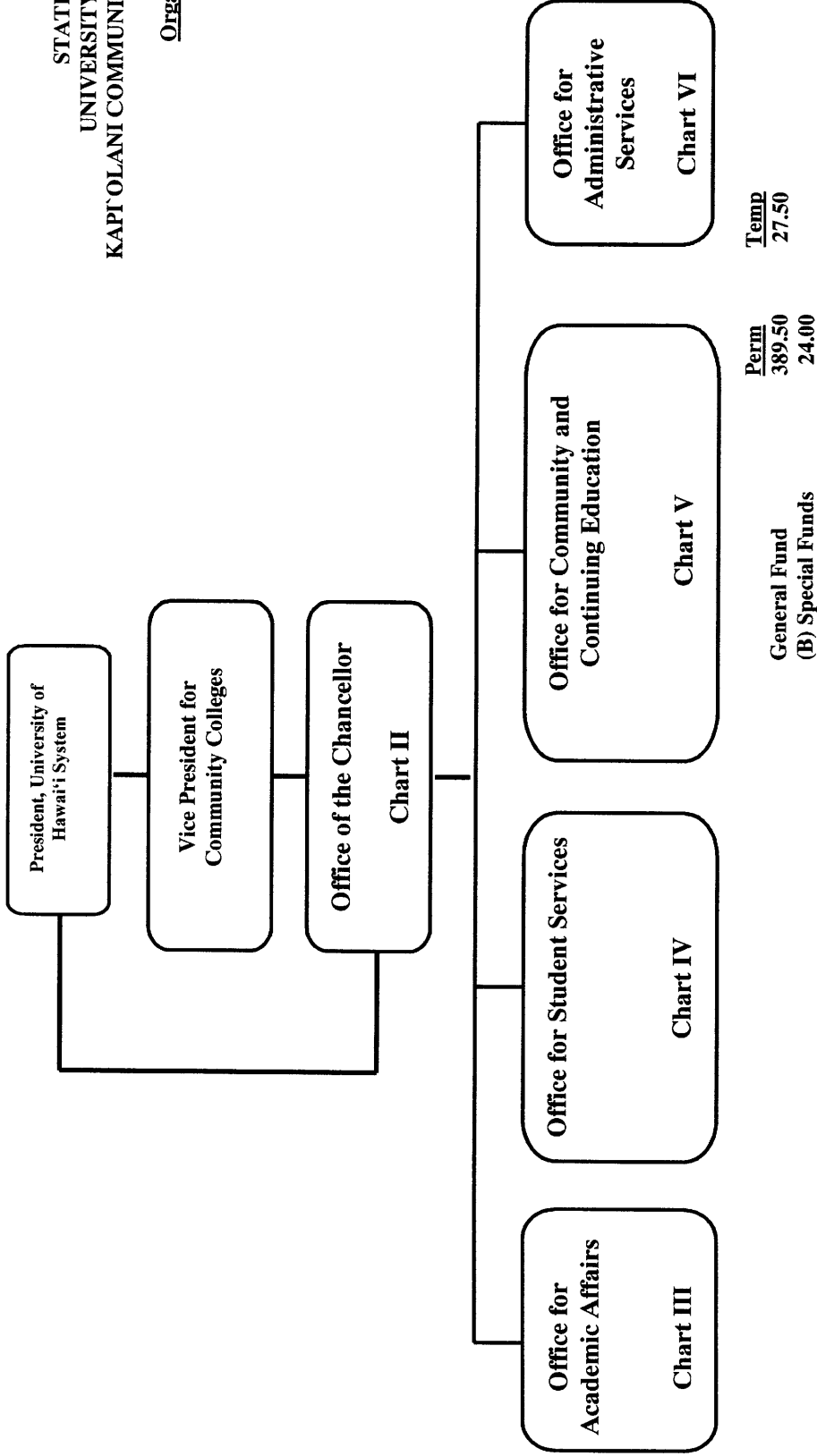


STATE OF HAWAII
 UNIVERSITY OF HAWAII
 KAPI'OLANI COMMUNITY COLLEGE

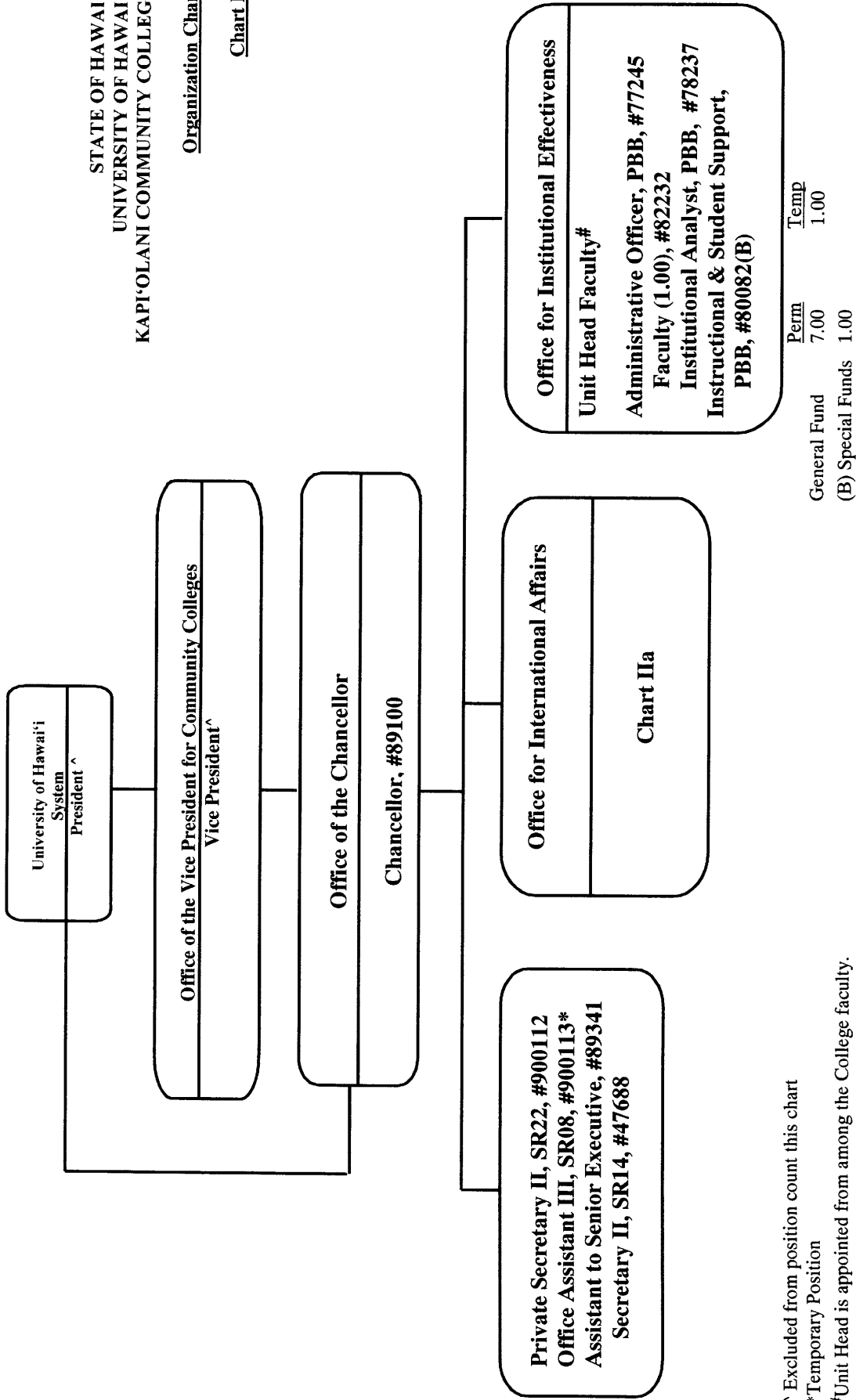
Organization Chart

Chart I



STATE OF HAWAII
 UNIVERSITY OF HAWAII
 KAPI'OLANI COMMUNITY COLLEGE

Organization Chart
Chart II



^ Excluded from position count this chart

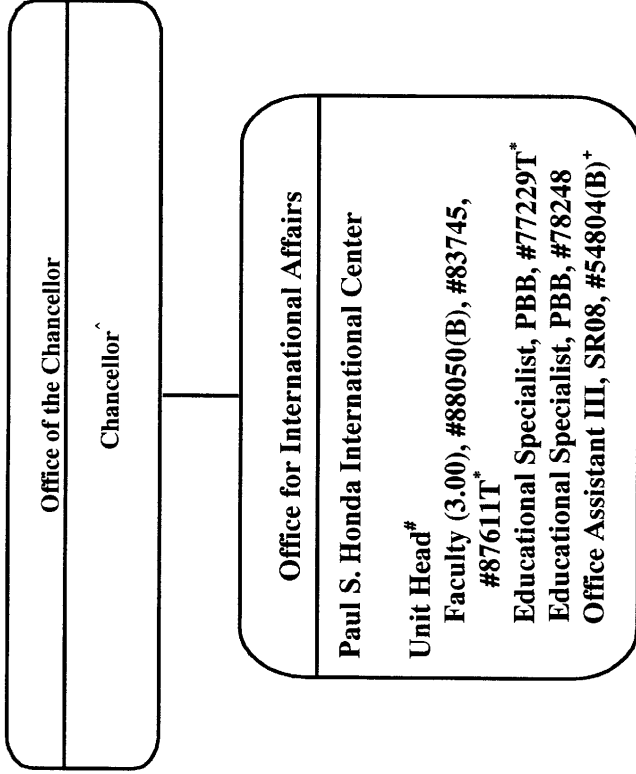
*Temporary Position

#Unit Head is appointed from among the College faculty.

STATE OF HAWAII
UNIVERSITY OF HAWAII
KAPI'OLANI COMMUNITY COLLEGE

Organization Chart

Chart Iia



^ Excluded from position count this chart

Unit Head is appointed from among the College faculty

* Temporary position

+ To be redescribed & submitted for classification review

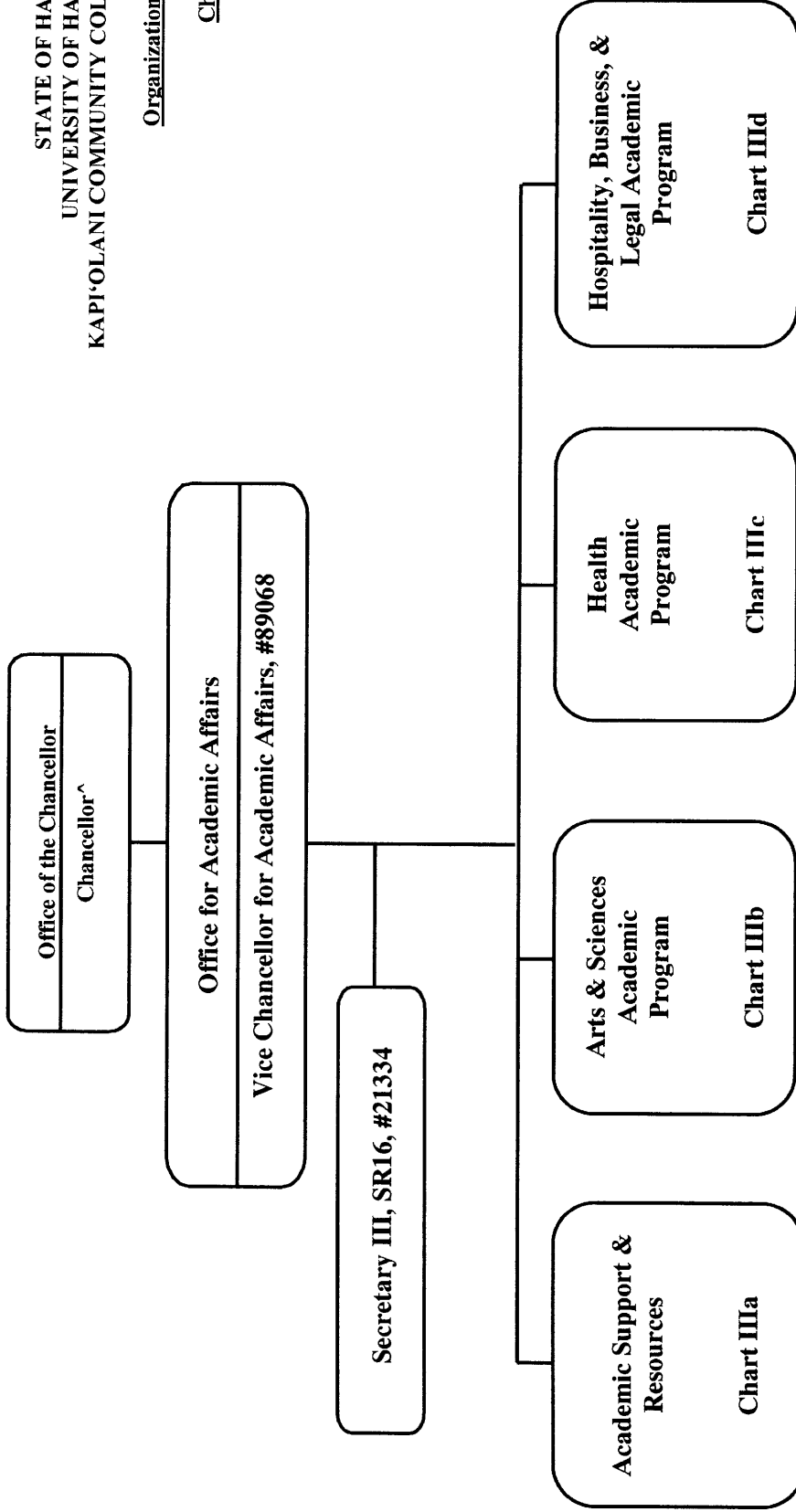
<u>Perm</u>	<u>Temp</u>
2.00	2.00

General Fund
(B) Special Funds

STATE OF HAWAII
UNIVERSITY OF HAWAII
KAPI'OLANI COMMUNITY COLLEGE

Organization Chart

Chart III



^Excluded from position count this chart

General Fund Perm Temp
2.00

Office for Academic Affairs
Vice Chancellor for Academic Affairs[^]

Academic Support & Resources

Organization Chart

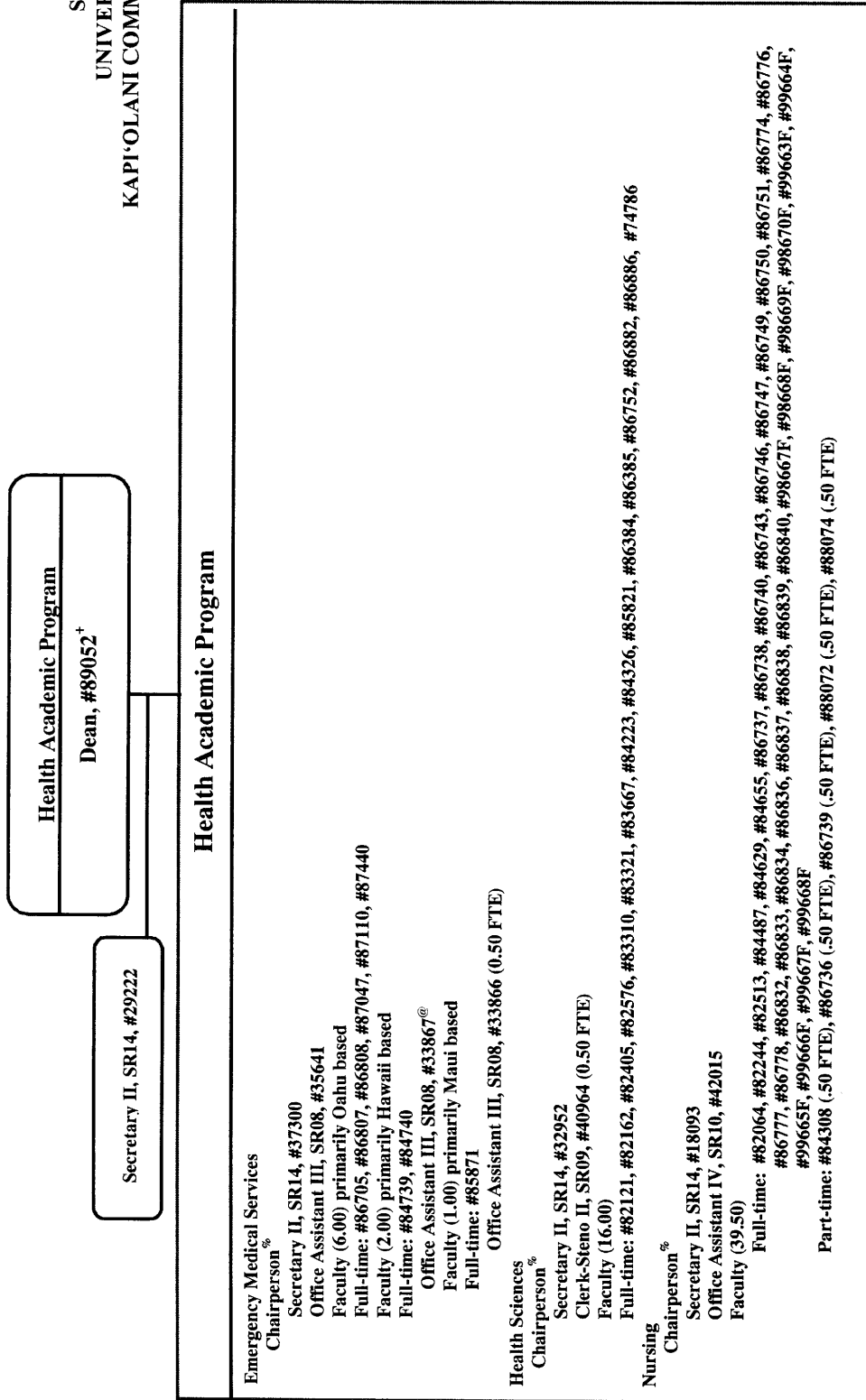
Chart IIIa

<p>Galludet University Regional Center for the Pacific Region Educational Specialist, PBA, #81761</p> <p>Curriculum Resources and Emphases Educational Specialist, PBB, #81581</p> <p>Library & Learning Resources Head Librarian[#] Secretary I, SRI2, #44249 Faculty (7.00) #74847, #83504, #84185, #84438, #86629, #86724, #88040 Library Technician V, SR 11, #39859^{@*} Library Assistant IV, SR09, #26762^{@*} Educational Specialist, PBA, #78238[@] Library Assistant IV, SR09, #42087, #43605 Educational Specialist, PBA, #77874[@] Educational Specialist, PBA, #77500 Educational & Academic Support Specialist, PBA, #81557, #80914T* Electronic Technician, PBA, #81260</p> <p>Center for Excellence in Learning, Teaching and Technology (CELTT) Unit Head[#] Faculty (2.00) #82386, #87603 Information Technology Specialist, PBB, #80748 Information Technology Specialist, PBC, #81384 Information Technology Specialist, PBB, #79922, #80529, #80340, #81627 Information Technology Specialist, PBA, #81220T* Electronic Technician, PBB, #81277 Electronic Technician, PBB, #80034 Media Specialist, PBB, #80694 Information Technology Specialist, PBB, #81535, #81654 Graphic Artist, PBB, #81060 Secretary II, SRI4, #21321 Office Assistant III, SR08, #48451[@]</p>	<p>Perm 35.00</p>	<p>Temp 2.00</p>	<p>General Fund</p>
--	-----------------------	----------------------	---------------------

[^] Excluded from position count this chart
^{*} Temporary position
[#] Head Librarian/Unit Head is appointed from among the faculty positions
⁺ To be reclassified & submitted for classification review
[@] Position supervised by one of the faculty positions

Organization Chart

Chart IIIc

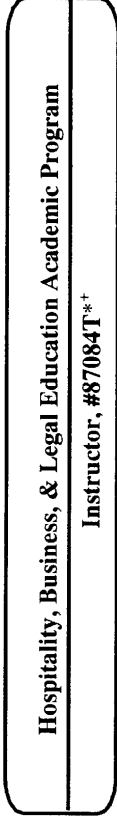


	<u>Perm</u>	<u>Temp</u>
General Fund	73.50	

% Chairperson is appointed from among the faculty positions
 @ Supervised by one of the faculty positions
 * To be redescribed & submitted for classification review

Organization Chart

Chart IIIId



Hospitality, Business, Legal Education Academic Program	
Culinary Institute of the Pacific Program Director, #89029* Chairperson%	
Faculty (12.00) Full-time: #82683, #82970, #83225, #83460, #83901, #84091, #84103, #84304, #84539, #86597, #86670, #86719 Secretary II, SR14, #16962	
Cook III, WS 08, #22318 (B), #32863 (B) Office Assistant III, SR08, #22319 (B)	
Educational & Academic Support Specialist, PBA, #81304 (B), #81420 (B), #81422 (B)	
Hospitality and Tourism Chairperson%	
Faculty (6.00) Full-time: #82066, #82467, #83133, #83684, #84369, #86741 Secretary II, SR 14, #44592*	
Business Academic Program Chairperson%	
Faculty (16.00) Full-time: #82026, #82218, #82348, #82503, #82728, #82795, #82931, #83221, #83734, #84150, #84337, #86591, #86593, #86598, #87123, #87144T* Secretary II, SR14, #22312	
Legal Academic Program Coordinator%	
Faculty (2.00) Full-time: #83071, #83360 Office Assistant III, SR08, #47900 (0.50 FTE)	

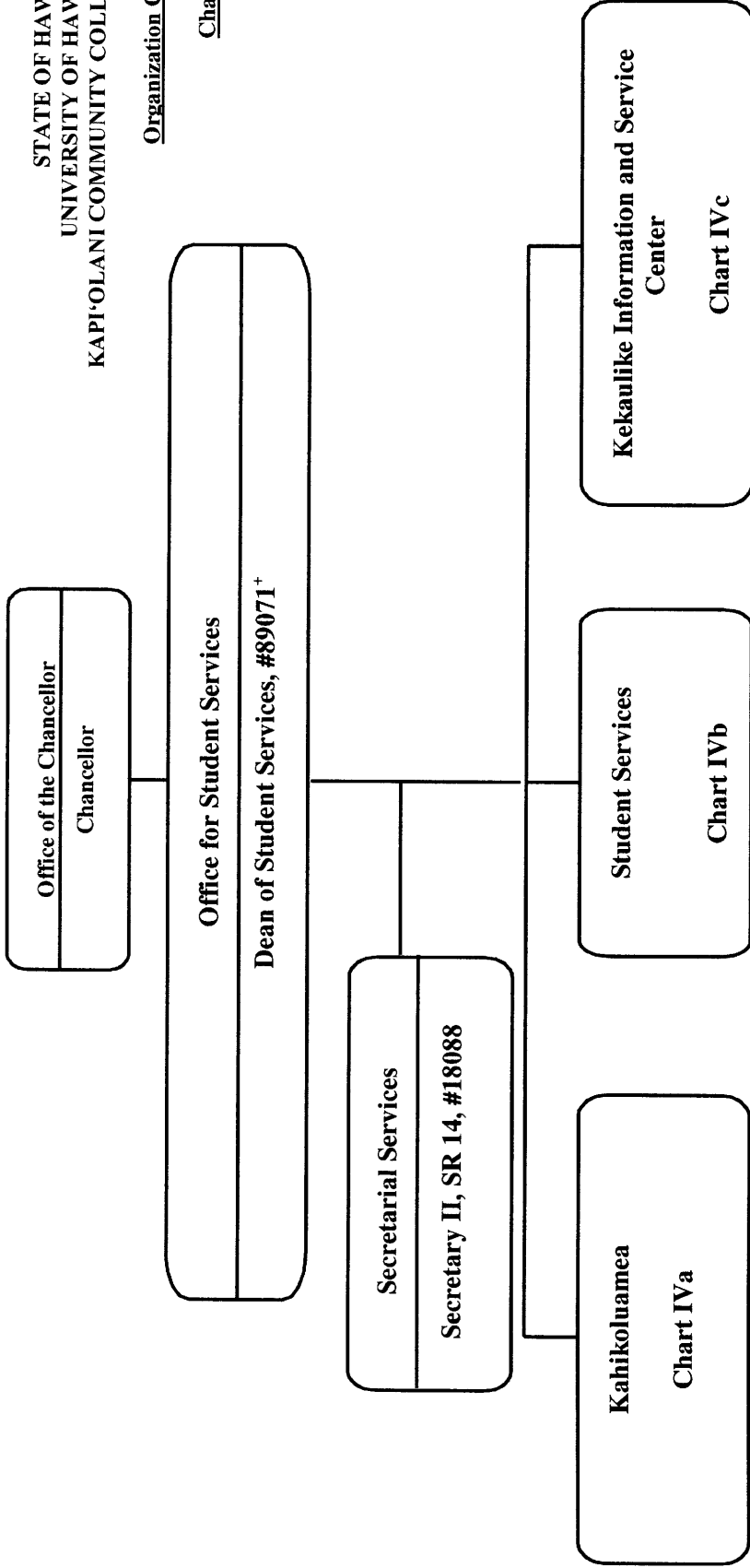
% Coordinator is appointed from among the faculty positions
 + To be redescribed & submitted for classification
 * Temporary position

General Fund	Perm	Temp
(B) Special Funds	40.50	2.00
	6.00	

STATE OF HAWAII
 UNIVERSITY OF HAWAII
 KAPI'OLANI COMMUNITY COLLEGE

Organization Chart

Chart IV



Temp

Perm
2.00

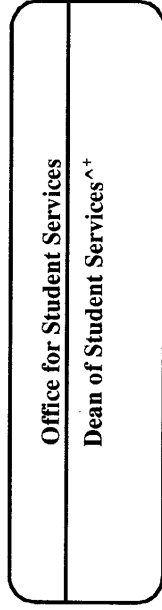
General Fund

^ Excluded from position count this chart
 + To be redescribed & submitted for classification

STATE OF HAWAII
UNIVERSITY OF HAWAII
KAPI'OLANI COMMUNITY COLLEGE

Organization Chart

Chart IVa



Kahikoluamea
<p>Chairperson % Secretary II, SR14, #14214 Faculty (16.00) Full-time: #74783, #82068, #82389, #82874, #83538, #83870, #84072, #86603, #87612T*, #87648, #98674F, #98675F, #99669F, #99672F, #99673F Approximately 16.00 FTE faculty will be assigned in whole or part from the Arts & Sciences Academic Program on an annual basis Office Assistant III, SR-08, #99160F</p>

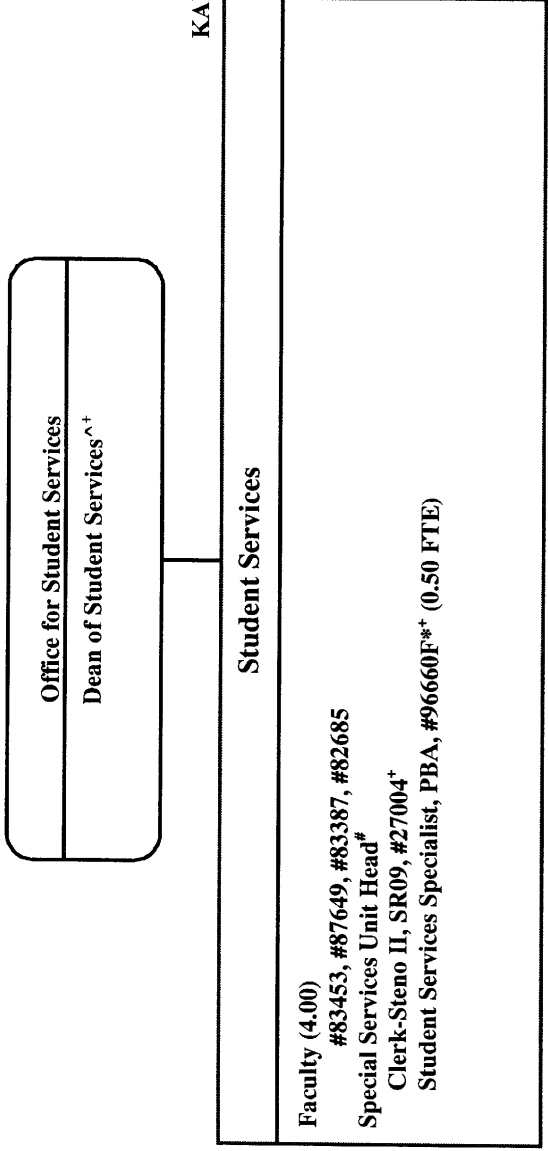
Perm 17.00
Temp 1.00

% Chairperson is appointed from among the faculty positions
^ Excluded from position count this chart
+ To be redescribed

STATE OF HAWAII
UNIVERSITY OF HAWAII
KAPI'OLANI COMMUNITY COLLEGE

Organization Chart

Chart IVb



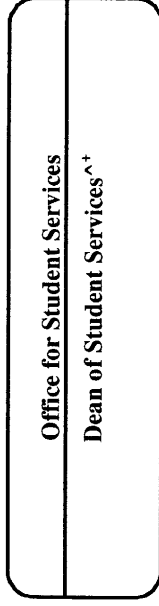
	<u>Perm</u>	<u>Temp</u>	
	5.00	0.50	
General Fund			

Unit Head is appointed from among the faculty positions
+ To be redescribed & submitted for classification review
^ Excluded from position count this chart

STATE OF HAWAII
UNIVERSITY OF HAWAII
KAPI'OLANI COMMUNITY COLLEGE

Organization Chart

Chart IVc

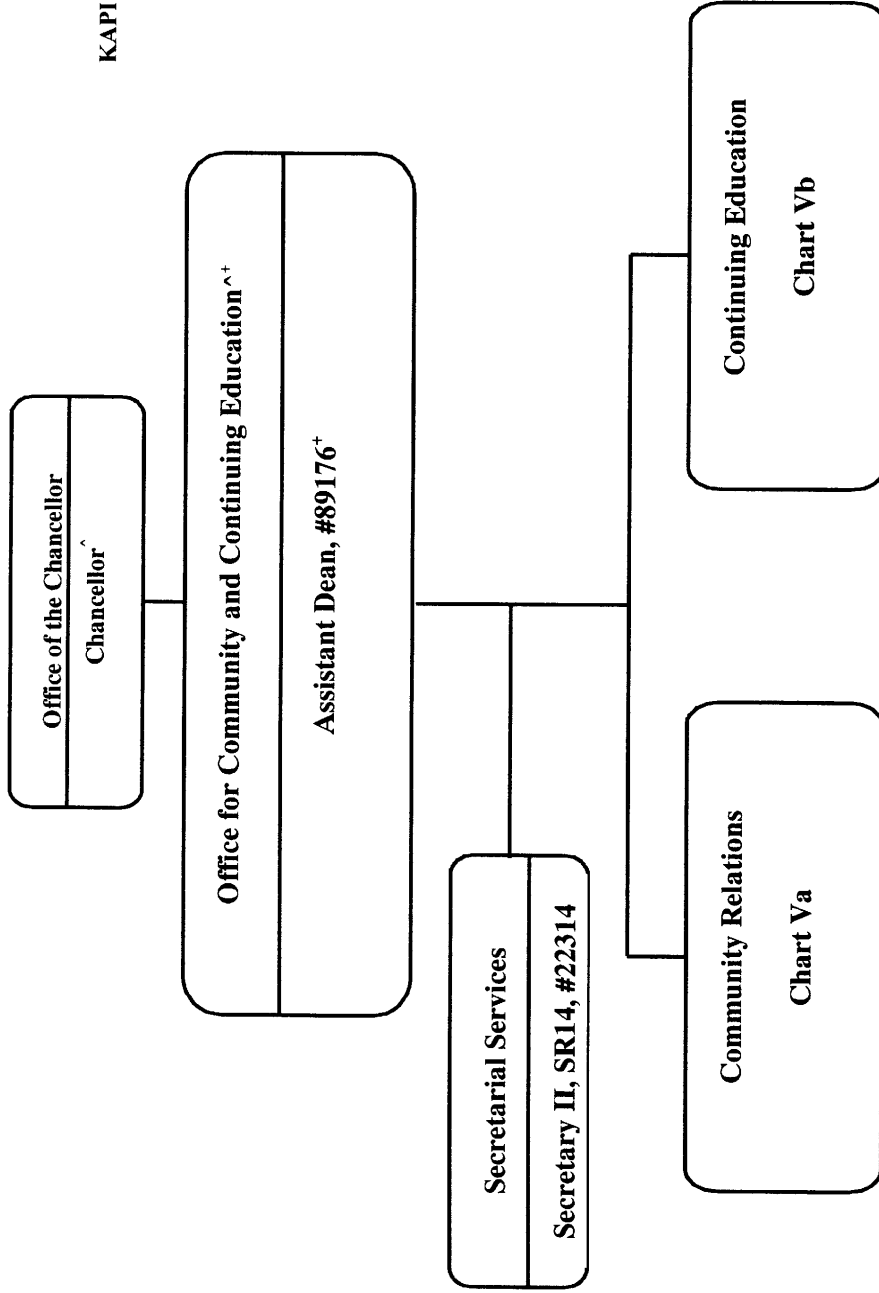


Kekaulike Information and Service Center
<p><u>Kekaulike Information and Service Center</u> Student Services Specialist, PBB, #81615⁺ Student Services Specialist, PBB, #80257⁺ Educational & Academic Support Specialist, PBA, #78204T* Student Services Specialist, PBB, #78203T* Office Assistant IV, SR10, #11485⁺, #18086⁺, #44254⁺, #54813⁺, #27015, #54811 Student Services Specialist, PBB, #77724 Student Services Specialist, PBB, #77331 (B)⁺ Student Services Specialist, PBA, #77953T* Student Services Specialist, PBB, #81547⁺ Student Services Specialist, PBB, #81878⁺, #81887⁺ Student Services Specialist, PBA, #77773 Instructor (Counselor), #83329⁺ Office Assistant IV, SR10, #09169⁺, #22315⁺, #41320(B)⁺, #44160⁺</p>

^ Excluded from position count this chart	Perm	Temp
+ To be redescribed & submitted for classification review	17.00	3.00
* Temporary position	2.00	
	General Fund	
	(B) Special Fund	

STATE OF HAWAII
 UNIVERSITY OF HAWAII
 KAPI'OLANI COMMUNITY COLLEGE

Organization Chart
Chart V



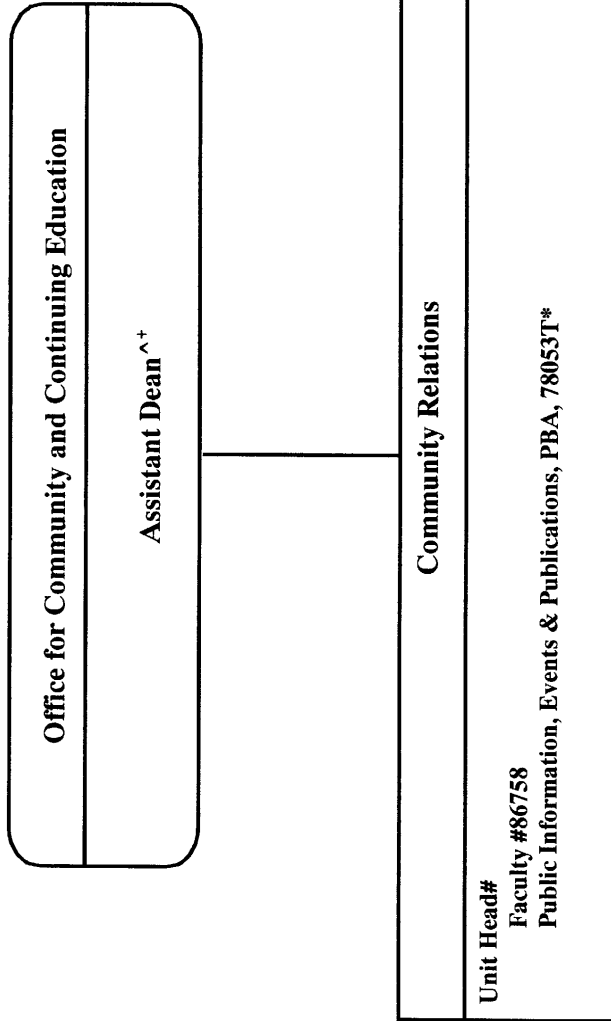
* To be redescribed & submitted for classification review
 ^ Excluded from position count this chart

General Fund Perm 2.00 Temp

STATE OF HAWAII
UNIVERSITY OF HAWAII
KAPI'OLANI COMMUNITY COLLEGE

Organization Chart

Chart Va

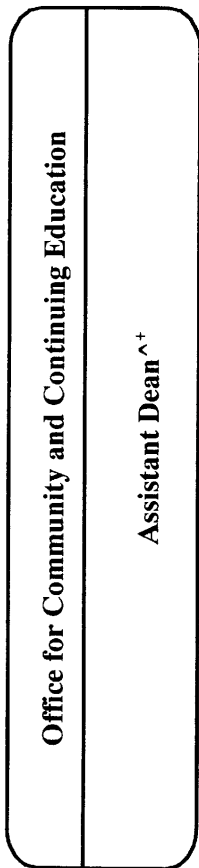


^ Excluded from position count this chart
* Temporary position
Unit head is appointed from among the faculty positions

STATE OF HAWAII
UNIVERSITY OF HAWAII
KAPI'OLANI COMMUNITY COLLEGE

Organization Chart

Chart Vb



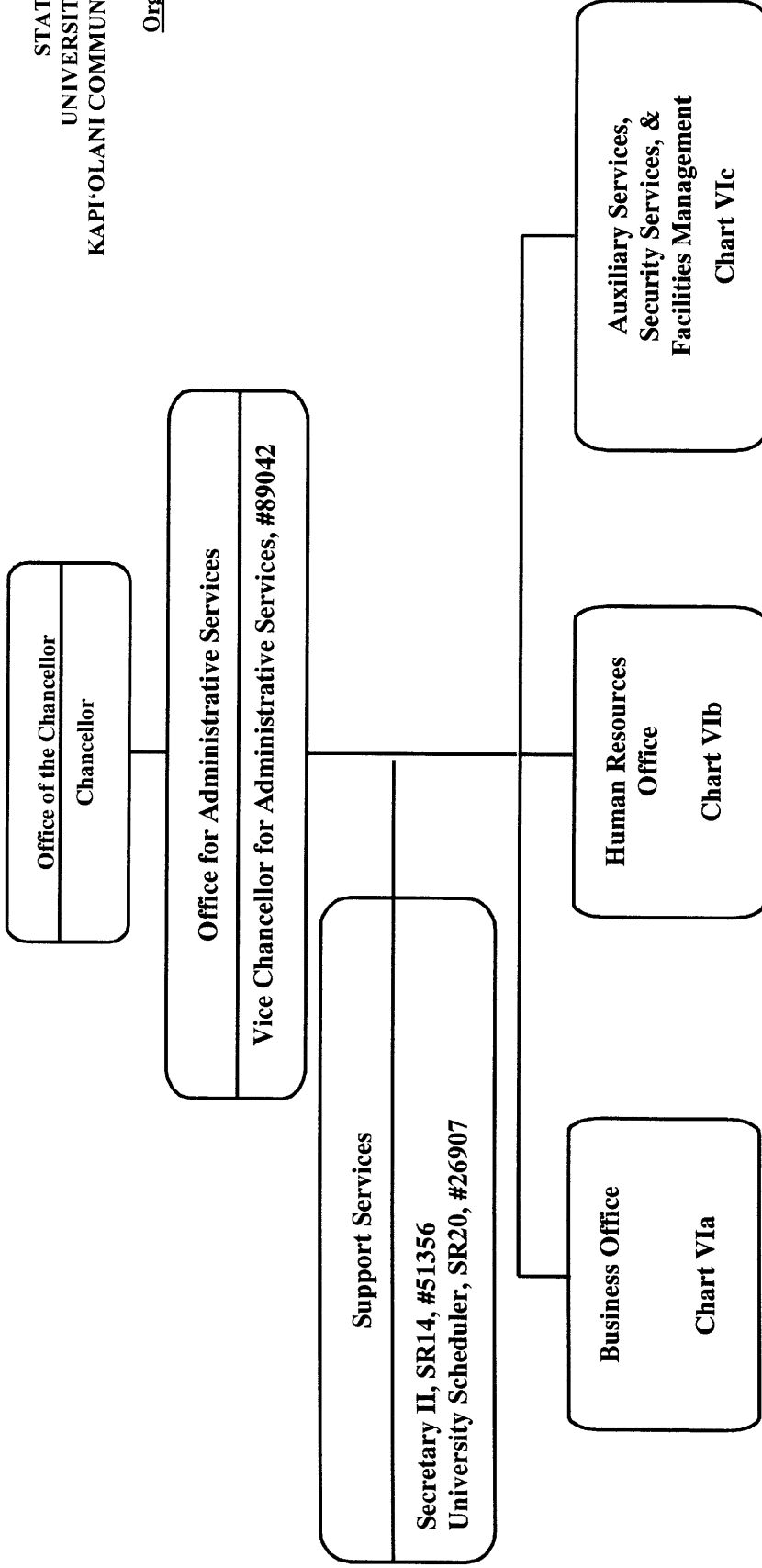
Continuing Education
<p>Unit Head#</p> <p>Faculty (13.00) #74784, #74785, #74787, #83771, #86701(B), #86702(B), #86706(B), #86711(B), #86715, #86742, #86794(B), #86944(B), #87102 Educational Specialist, PBB, #77025(B), #78302, #80778(B), #81429(B), #81923(B) Educational Specialist, PBA, #80617(B) Office Assistant III, SR08, #900374 (0.50 FTE) Clerk Steno III, #35948 (B)</p>

^ Excluded from position count this chart	<u>Perm</u>	<u>Temp</u>
+ To be redescribed & submitted for classification review	8.50	
# Unit head is appointed from among the faculty positions	General Fund (B) Special Funds	12.00

STATE OF HAWAII
UNIVERSITY OF HAWAII
KAPI'OLANI COMMUNITY COLLEGE

Organization Chart

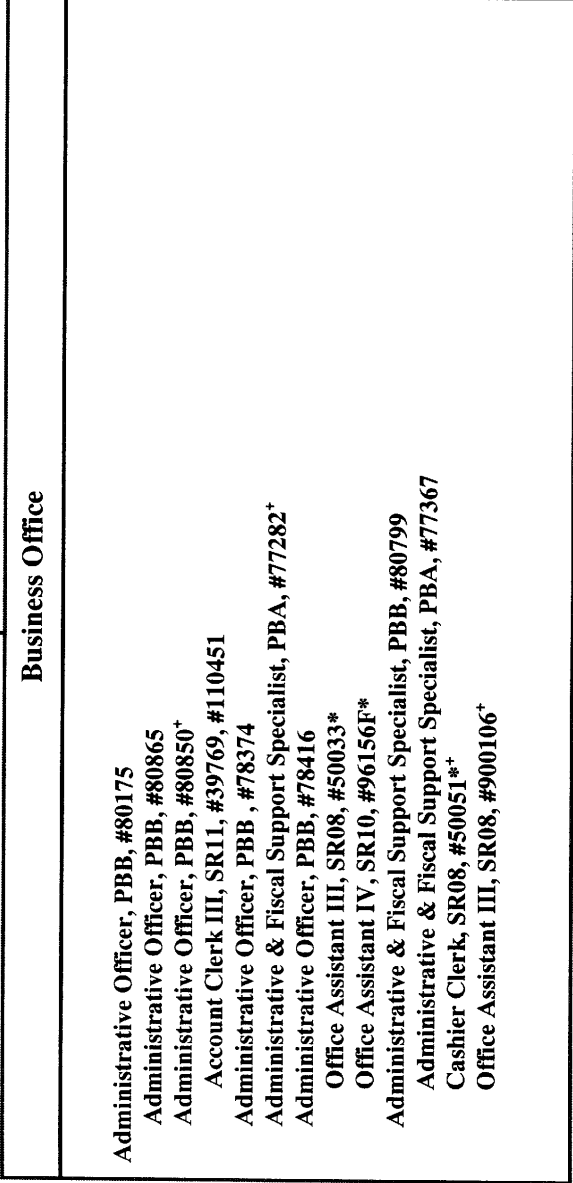
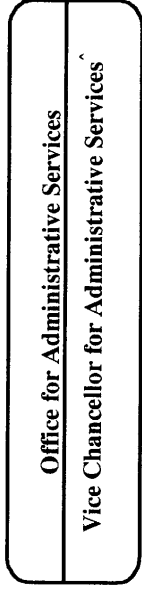
Chart VI



General Fund Perm Temp
3.00

Organization Chart

Chart VIa



^ Excluded from position count this chart
 + To be redescribed & submitted for classification review
 * Temporary position

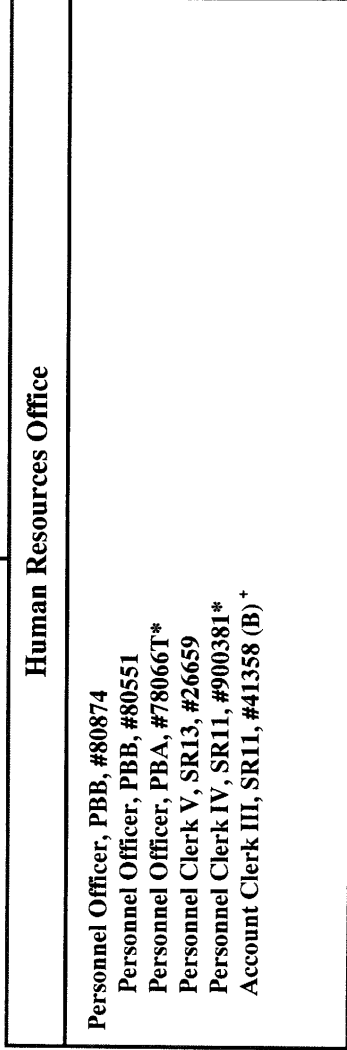
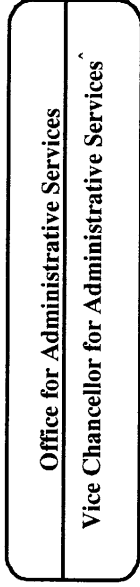
Perm 11.00
 Temp 3.00

General Fund
 (B) Special Fund

STATE OF HAWAII
UNIVERSITY OF HAWAII
KAPI'OLANI COMMUNITY COLLEGE

Organization Chart

Chart VIb



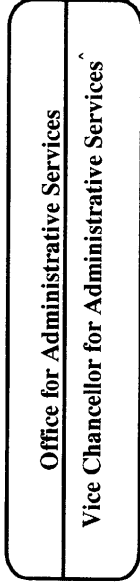
<u>Perm</u>	<u>Temp</u>
3.00	2.00
1.00	

General Fund
(B) Special Fund

^ Excluded from position count this chart
 * Temporary position
 + To be redescribed

Organization Chart

Chart Vic



Auxiliary Services, Security Services, & Facilities Management	Perm	Temp
Auxiliary & Facilities Service Officer IV, PBB, #81650 Janitor III, WS02, #14428, #18021 Janitor II, BC02, #11107, #14427, #16957, #26654, #26655, #26656, #26657, #35889, #35890, #37512, #40279, #40280, #43305, #43306, #46433, #46434, #50014, #50015 Groundskeeper II, WS02, #26652 Groundskeeper I, BC02, #26651, #26653, #35888, #36455, #43304, #43308 Office Assistant III, SR08, #50060** University Security Officer II, SR16, #31325, #99172F University Security Officer I, SR14, #31324*, #45730*, #99171F Building Maintenance Worker II, WS09, #51300+ Building Maintenance Worker I, BC09, #34492, #51358, #900299* Painter I, BC09, #43307 Sprinkler System Repairer, BC05, #50005 Office Assistant IV, SR10, #22316 Offset Press Operator III, BC09, #39797+ Audio Visual Technician I, BC07, #47350* (0.50 FTE) Offset Press Operator II, BC08, #47346* (0.50 FTE) Office Assistant III, SR08, #54823, #54825	43.00	2.00
General Fund	43.00	2.00

[^] Excluded from position count this chart

* Temporary position

+ To be redescribed & submitted for classification review