

# *Kapi'olani Community College*

## *Reorganization, Pathways, & Pohnpei*

Presented to Kapi'olani CC  
Counselor Summer Academy,  
July 15, 2008  
by  
Leon Richards, Chancellor

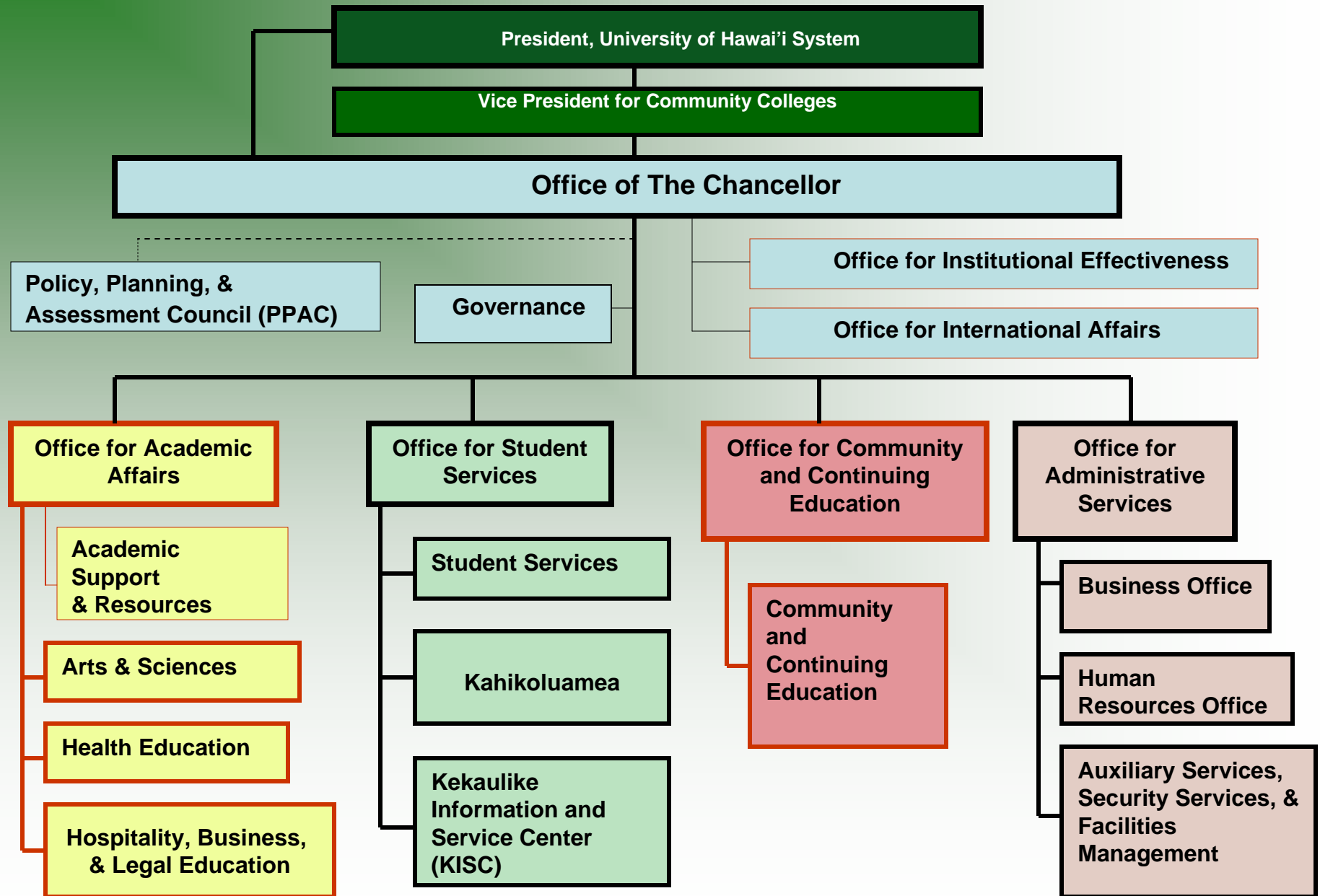
# Kapi`olani CC Reorganization : *Outcomes*



Improve **collaboration and coordination** of programs administratively by:

- Promoting informed efforts to do resource allocations including obtaining grants connected to / based on *institutional research and assessment / data-based decision-making*;
- Promoting the integration & implementation of academic and program pathways for *access & success (e.g., through coherent student services & support)*;
- Promoting the establishment of *academic academies and academic clusters (i.e., coherent and articulated academic pathways)*;
- Promoting organized and focused *Continuing Education* effort;
- Promoting centralized efforts for more *efficient use* of space and other campus resources.

# Success Through Academic Clusters





# Student Engagement & Success Model Pathway

## Pre-Pathway

*(Pathway Planning & Academic Support)*

Ku`ilei

Kahikoluamea  
- Academic academies  
as bridges to Academic  
Custers

Activities such as  
Summer Bridges

## Pathway Selection/ Preparation

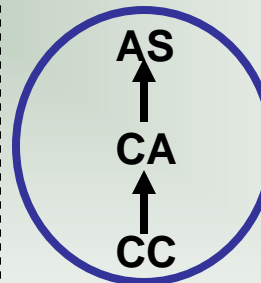
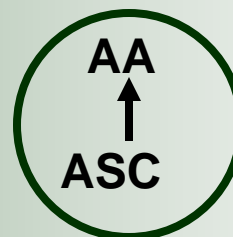
Kahikoluamea

Ka`ie`ie

Mananawai

Career Laddering

## Pathways



## Post-Pathway Outcomes

Transfer - Ka`ie`ie  
- Mananawai

↓  
Degree Completion

Career/Employment

Lifelong Learning

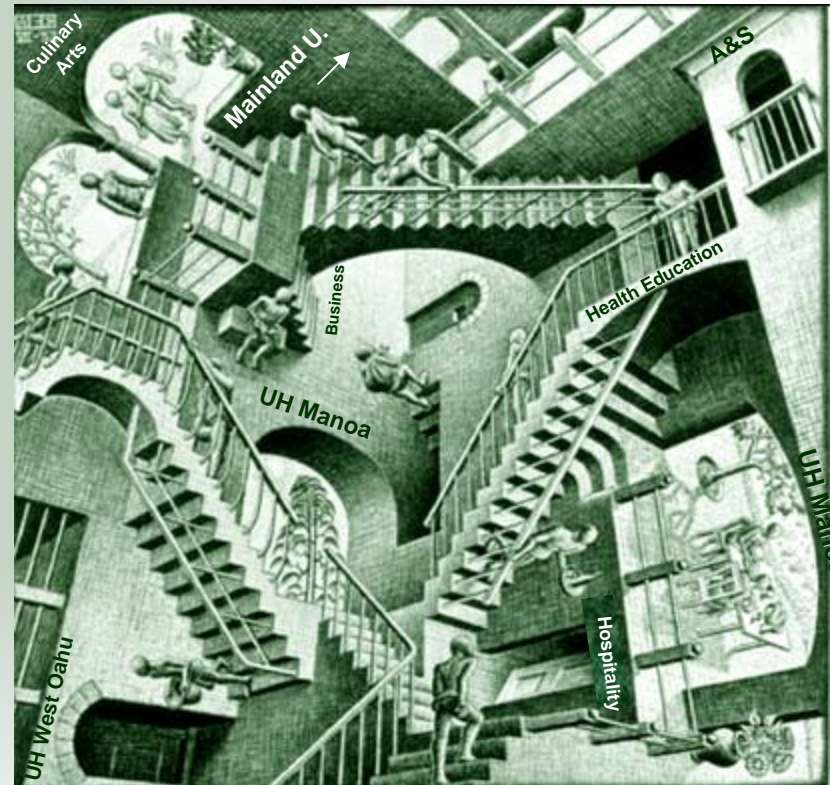


# Some Preliminary Questions -----

1. What is an Academic Cluster?  
What are Academic Academies?  
What is an Academic Certificate /Degree Pathway? What is a *Pathway Counselor*? What are the *roles* of Pathway Counselors?

2. Given the Reorganization structure, including the Student Engagement & Success Model Pathway, how do we best help students make *successful decisions & choices*?

3. Within the engagement model how do we help each student be successful in *creating and navigating his/her own pathway with persistence and success*?



# Some Preliminary *Thoughts and Principles* on the expanded role of the counselor in the new pathways model:

## 1. Collaborate, collaborate, collaborate....

A guiding principal for this model is that there is a **high degree of collaboration** among the counselors, instructional faculty and academic support faculty on:

- **utilizing retention and student success** initiatives;
- **promoting student success** through the provision of programs and services to meet academic and social needs outside the classroom; and
- in **designing student success initiatives** that combine both academic content and social interactions.

# Some Preliminary *Thoughts and Principles* on the expanded role of the counselor in the new pathways model:

## 2. Coordinate, coordinate, coordinate.....

- In this model, counselors and faculty begin to serve as *coordinators* for the following types of activities:
  - *Transition/outreach programs* for incoming students;
  - *Mentoring programs* that help students navigate the institution;
  - *Peer mentor programs* where trained students offer academic and social support services to other students; and
  - *Retention programs* that focus on underprepared or high-risk student groups and foster community-building.

## Some Preliminary *Thoughts and Principles* (cont):

### 3. The Whole Student (and nothing but the *Whole Student*)...

- There is a focus on the education of the *whole student*. In the same way faculty currently serve as faculty advisors, counselors begin to be *more involved in the teaching process* through participation in classroom activities and having students make good use of campus learning resources and centers and other learning activities outside of the classroom.
- As part of their responsibilities, *counselors participate* in orientation sessions, early warning intervention programs, summer bridge programs, and promote students' involvement in ongoing co-curricular student activities as part of their responsibility in helping students meet the college's general education outcomes.
- In addition to discussing courses and registration through the academic advising process, *counselors connect* students to various aspects of their major and *encourage internships or service learning experiences to promote learning*.



## Some Preliminary *Thoughts and Principles* on the expanded role of the counselor in the new pathways model:

### 4. Research, evaluate, change; research, evaluate, change;...

- Counselors begin to *conduct educational research* for the purpose of developing innovative models for student success.
- Counselors begin to become familiar with the *assessment of student learning* of co-curricular programs and services as part of the college's assessment-planning process.



*Kapi'olani Community College*

*Reorganization, Pathways, & Pohnpei*

Presented to  
Kapi'olani CC Counselor Summer Academy  
July 15, 2008

Leon Richards, Chancellor