

Planning at Kapi`olani Community College

presented to

HOST Advisory Board

November 15, 2007



UNIVERSITY OF HAWAII*
KAPI`OLANI
COMMUNITY COLLEGE



Leon Richards, Chancellor

**Reorganizing
the
College**

<http://quill.kcc.hawaii.edu/page/reorg>



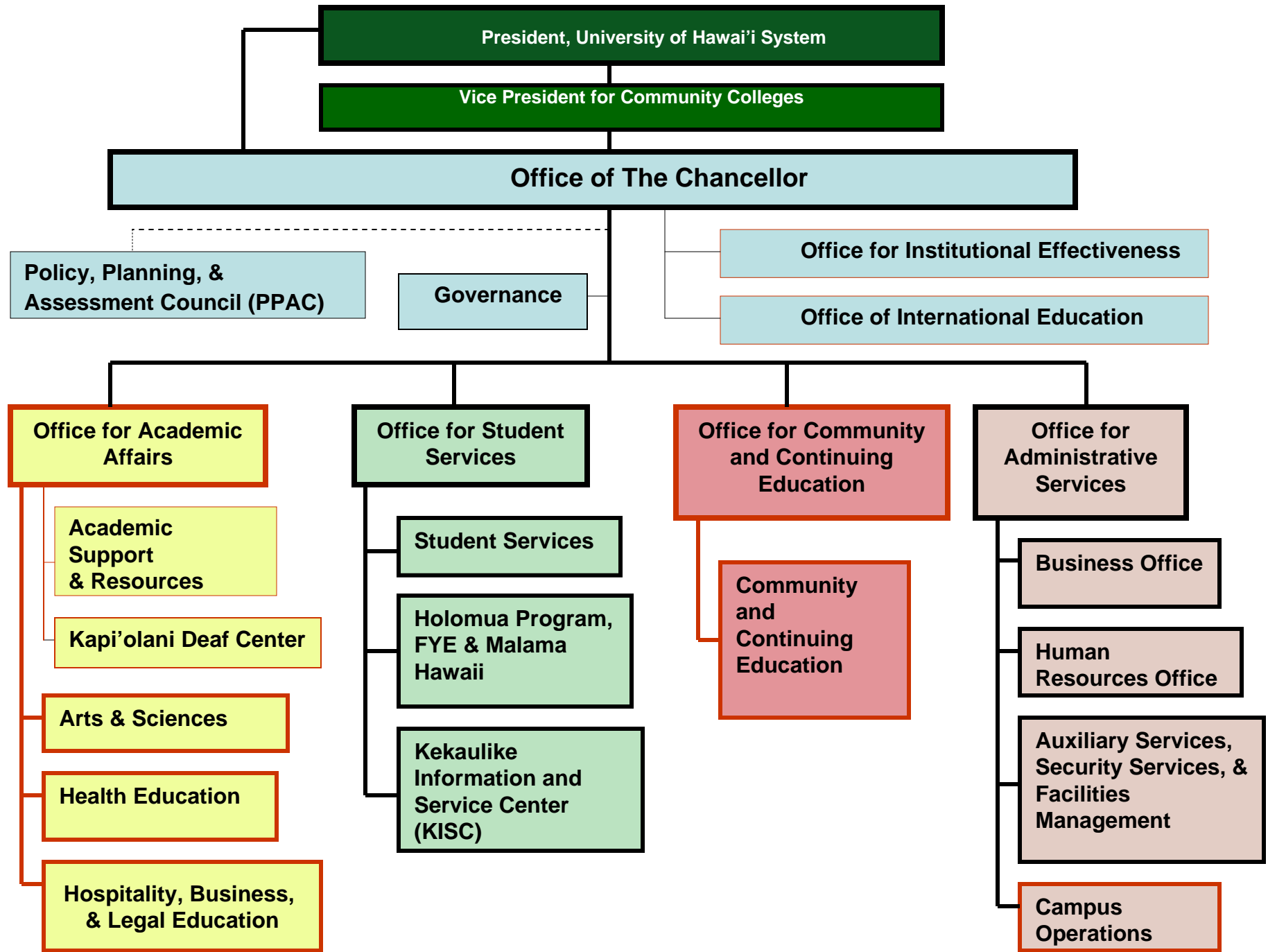
Reorganization Proposal



Easier to **consolidate** alike functions in the major areas of the College;

Easier to establish **academic & student services clusters**;

Easier to implement **degree pathways and student engagement and success Pathways model.**



- **Strategic and Long Range Development Plans – Update 2008-2015**



Strategic & Long Range Development Plans

- Starts with:

what we are about,

our goals,

who we are,



UNIVERSITY of HAWAII*
KAPI'OLANI
COMMUNITY COLLEGE

our mission,



our objectives,

our physical campus.

our stakeholders....and...

Strategic & Long Range Development Plans

- Identify **academic, educational and physical development** needed to achieve academic goals and meet and enhance its mission in the future, and
- Explore & explain, given the present efforts, **additional programs and future space needs** of the College.



Strategic & Long Range Development Plans

- Develop *comprehensive plans* that guide the College's academic and physical development such as *new and enhanced* present programs and the location of buildings, open space, circulation, and other land uses, respectively.



KCC

UHM



Ka`ie`ie -

A degree pathway partnership agreement through which students can be enrolled in both UHM and KCC campuses and earn two degrees



KCC

UHM

Ka`ie`ie

Ka`ie`ie students are considered continuing UH Manoa students upon transfer.

- Ka`ie`ie program paths to UH Manoa:

1. Apply to UHM, be accepted but **declare KCC as your home institution** and take courses at KCC;
2. *Begin at KCC and apply to UHM as a Ka`ie`ie student after earning 24 credits, and maintaining a 2.0 GPA at KCC; when accepted to UHM **continue taking classes at KCC**, indicating it as your home institution.*



Summary

- Goals
 - Approval of *Re-organization Proposal*
 - Completion of the *Strategic & Long Range Development Plans*
 - Implementation of the *UHM/KCC Degree Pathway Program, Ka'ie'ie*, in at least 5 academic program areas



Planning at Kapi`olani Community College

presented to

HOST Advisory Board



UNIVERSITY OF HAWAII*
KAPI'OLANI
COMMUNITY COLLEGE



Leon Richards
Chancellor
November 15, 2007