

Kapi'olani Community College

***Integrated Purposeful Pathway
&
Lifelong Learning***

August 25, 2008



Integrated Purposeful Pathway & Lifelong Learning

STUDENT TRANSFER GOAL

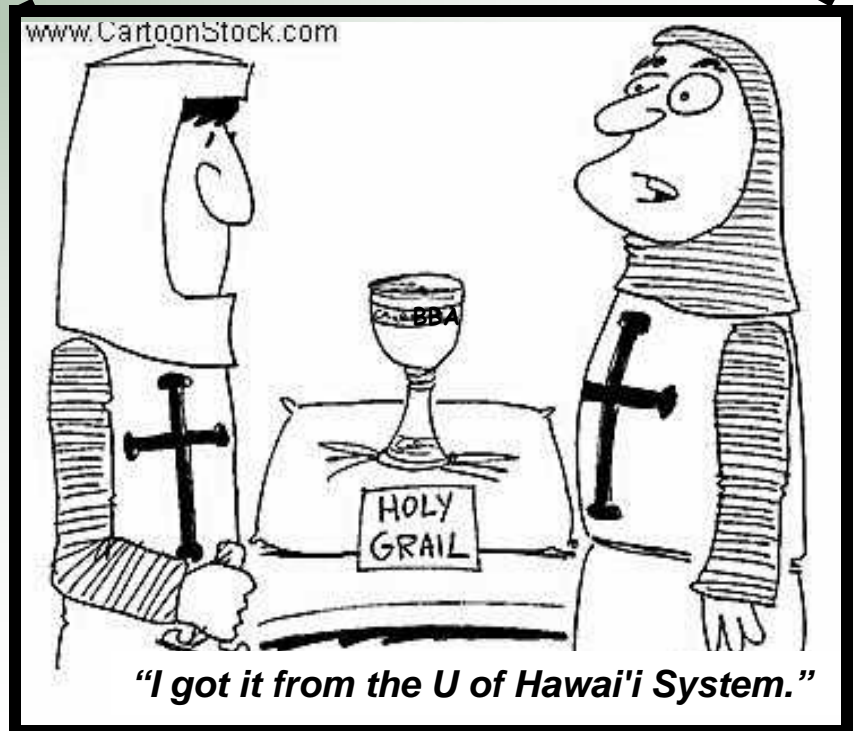
Values, attitudes, interests, goals, incentives (intrinsic/extrinsic), knowledge, abilities

KapCC A.A. Degree

Successful Transfer to UHM CBA as Upper Classman

BA in Business Administration

Lifelong Learning



Integrated Purposeful Pathway & Lifelong Learning

I. Coherent & Articulated Academic Pathway:

Requirements for career or transfer goal, e.g.,
KCC Transfer to UHM/College of Business

KapCC AA Degree Requirements: Courses to meet lower division requirements for transfer to the CBA at UHM

- Foundation
- Diversification
- Hawaiian/Second Language
- Electives

UHM Admission Requirements for Transfer Into BBA in College of Business

1. Use 12 of the 18 credits available as electives in the A.A. Degree – ACC 201, ACC 202, ICS 201, and BLAW 200,
2. Use three additional elective credits to take additional MATH classes at the College, if necessary.
3. Concerning the Diversification – Social Sciences requirements, choose ECON 130 and 131 and PSY 100 or SOC 100, the latter two courses being prerequisites for BUS 315.



Integrated Purposeful Pathway & Lifelong Learning

II. Coherent Student Services:

Systems/Programs/Interventions to Improve Student Persistence & Retention

Credit-Based Transition Programs for H.S. Students:

- Running Start for H.S. Juniors & Seniors
- Early Admission For H.S. Seniors
- College Credit Equivalency Program

First Year Experience:

- Master Academic Plan
- Access to College Excellence

Honda Internat'l Center

Learning Support resources, e.g., Library, Computing Center, Learning Assistance Centers, i.e.:

- Kahikoluamea
- Ko'piko Computer Lab
- Health & Natural Sciences Learning Center

Student Support Services:

- SSSO - 734-9552.
- Counseling - 734-9554
- Child Care - 734-9393
- TRIO - Student Support Services 734-9552
- Testing Center - 734-9340
- Services for Deaf & Hard-of Hearing - 734-9210, or TDD, relay service at 711.
- Maida Kamber Center for Career & Transfer Services
- Single Parents and Homemakers Program - 734-9500
- Native Hawaiian Career & Technical Education Program
- Kekaulike Information & Service Center - 734-9555; registration for classes.



Integrated Purposeful Pathway & Lifelong Learning



III. Coherent Curricular Infrastructure - Transformative Experiences that prepare students for the 21st century through essential learning outcomes

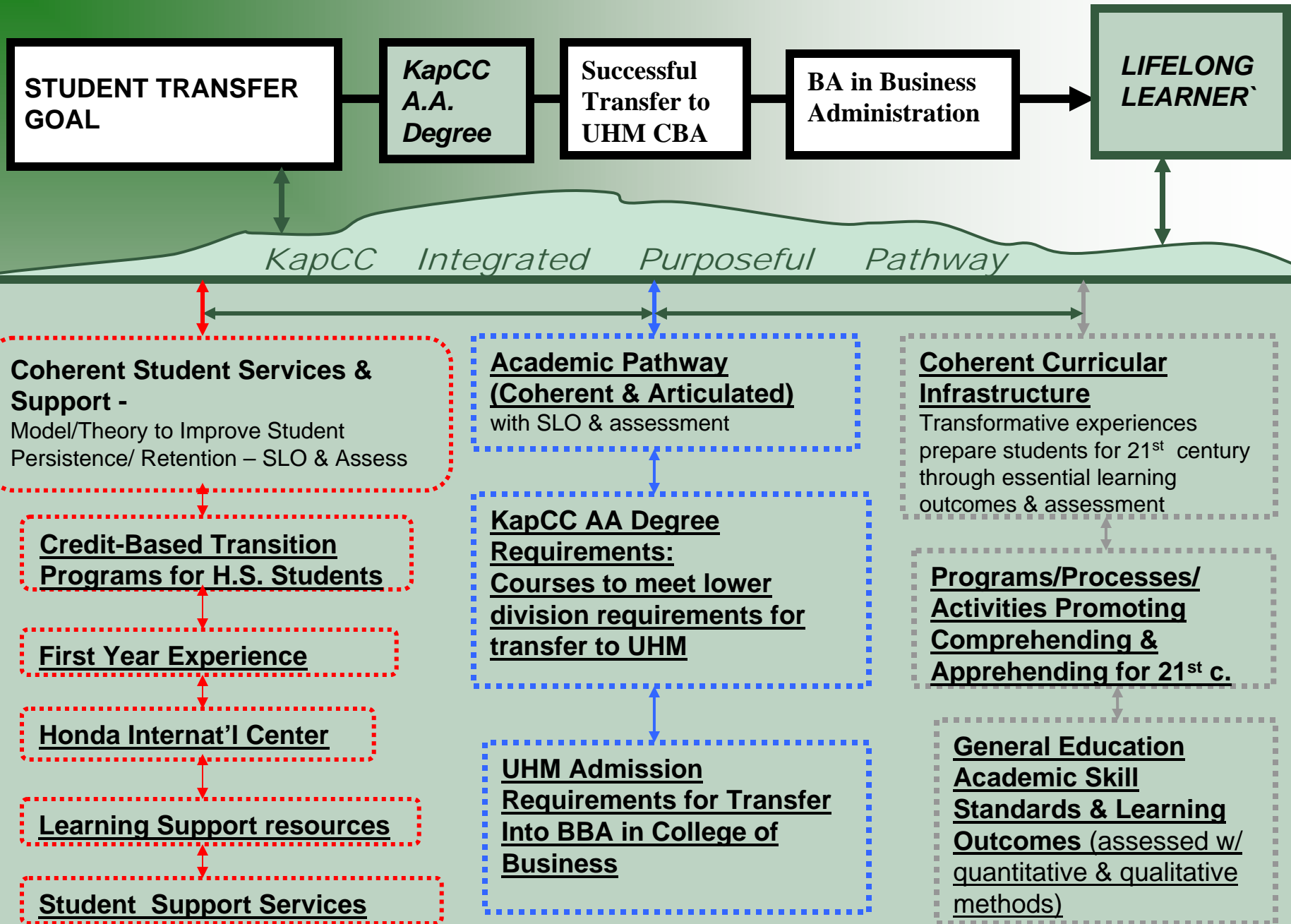
Processes/Activities for Comprehending & Apprehending :

- Writing & Thinking Across the Curriculum
- Information Technology Aptitude
- Service Learning
- International Education/Global Perspective
- Learning Communities
- Internships
- Undergraduate Research/Quantitative Reasoning
- Capstone Courses and Projects (e.g., research paper, performance, portfolio, eportfolio, exhibit of artwork, etc.)
- Common Intellectual Experiences (required common courses)
- Collaborative Assignments and Projects

General Education Academic Skill Standards & Learning Outcomes (assessed by quantitative & qualitative methods):

1. Written Communication
2. Critical Thinking
3. Information, Retrieval and Technology
4. Quantitative Reasoning
5. Oral Communication
6. Understanding Self and Community

Integrated Purposeful Pathway & Lifelong Learning Iceberg



**Integrated Purposeful
Pathway:
A Three-Legged Stool**

Coherence:

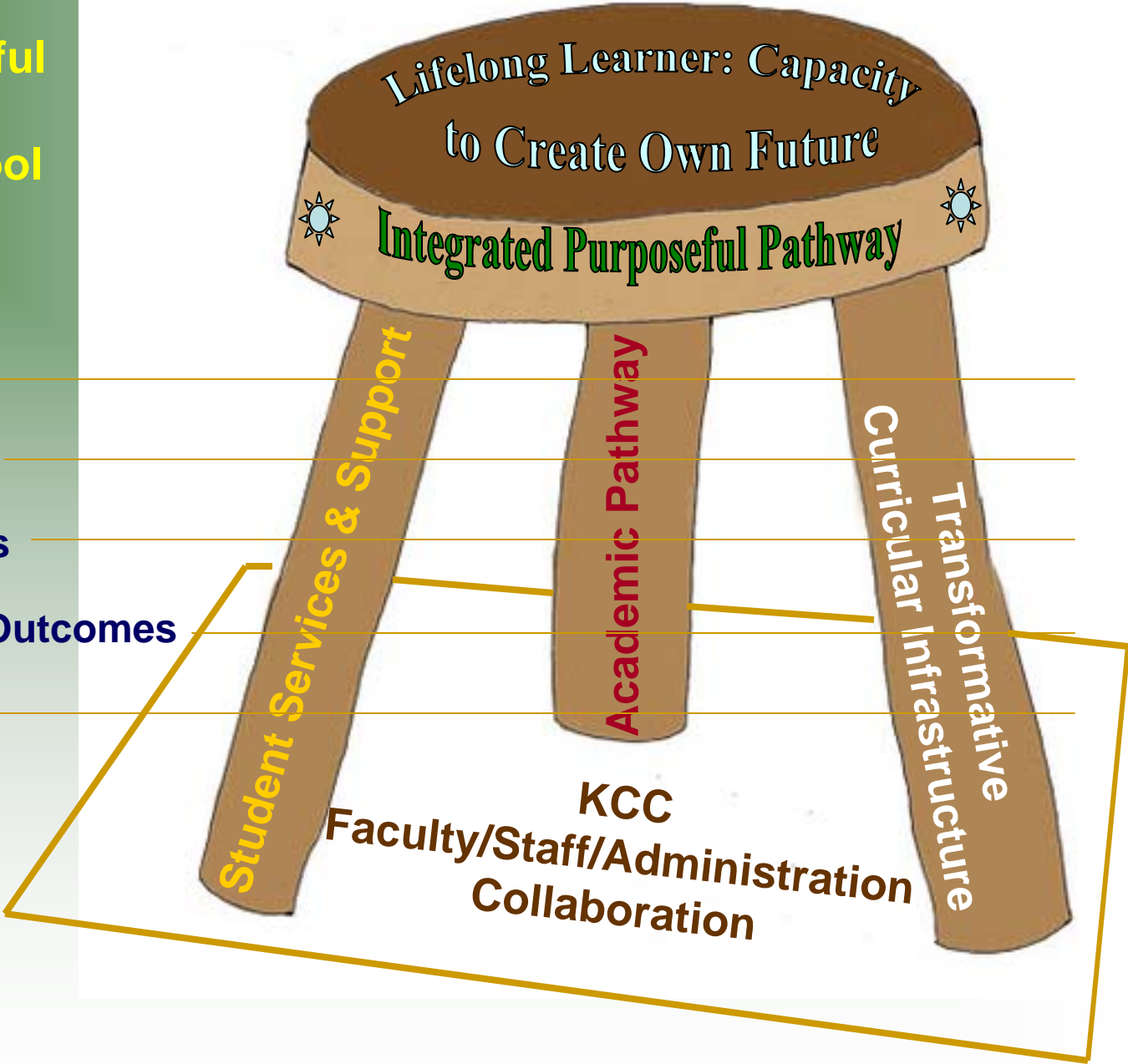
Expert Outcomes

Proficient Outcomes

Competent Outcomes

Advanced Beginner Outcomes

Novice Outcomes





Kapi'olani Community College
Integrated Purposeful Pathway &
Lifelong Learning

August 25, 2008