

State of Hawai'i  
University of Hawai'i  
Kapi'olani Community College

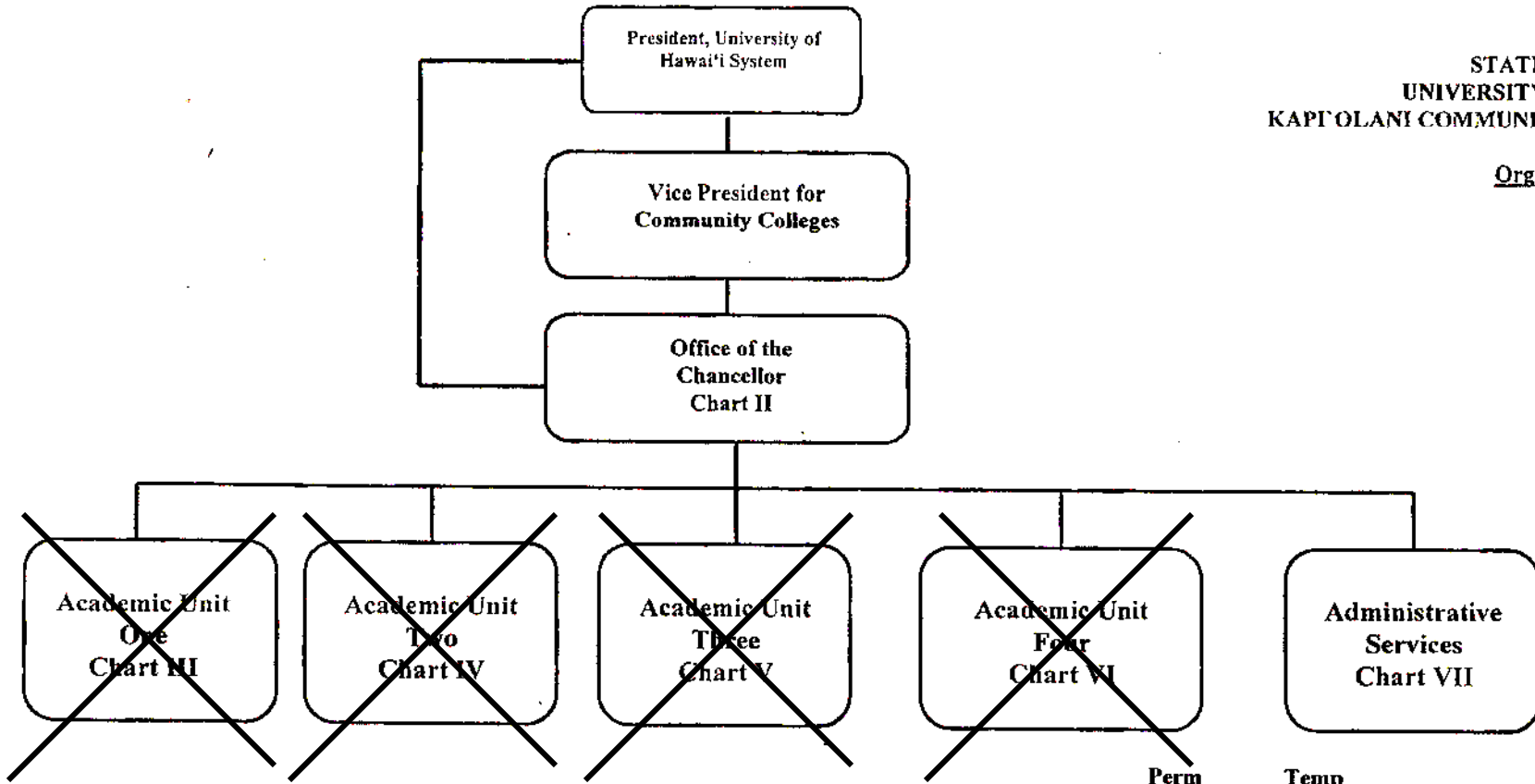
**DRAFT** of Organization Charts

Updated November 22, 2006

STATE OF HAWAII  
 UNIVERSITY OF HAWAII  
 KAPIOLANI COMMUNITY COLLEGE

Organization Chart

Chart I



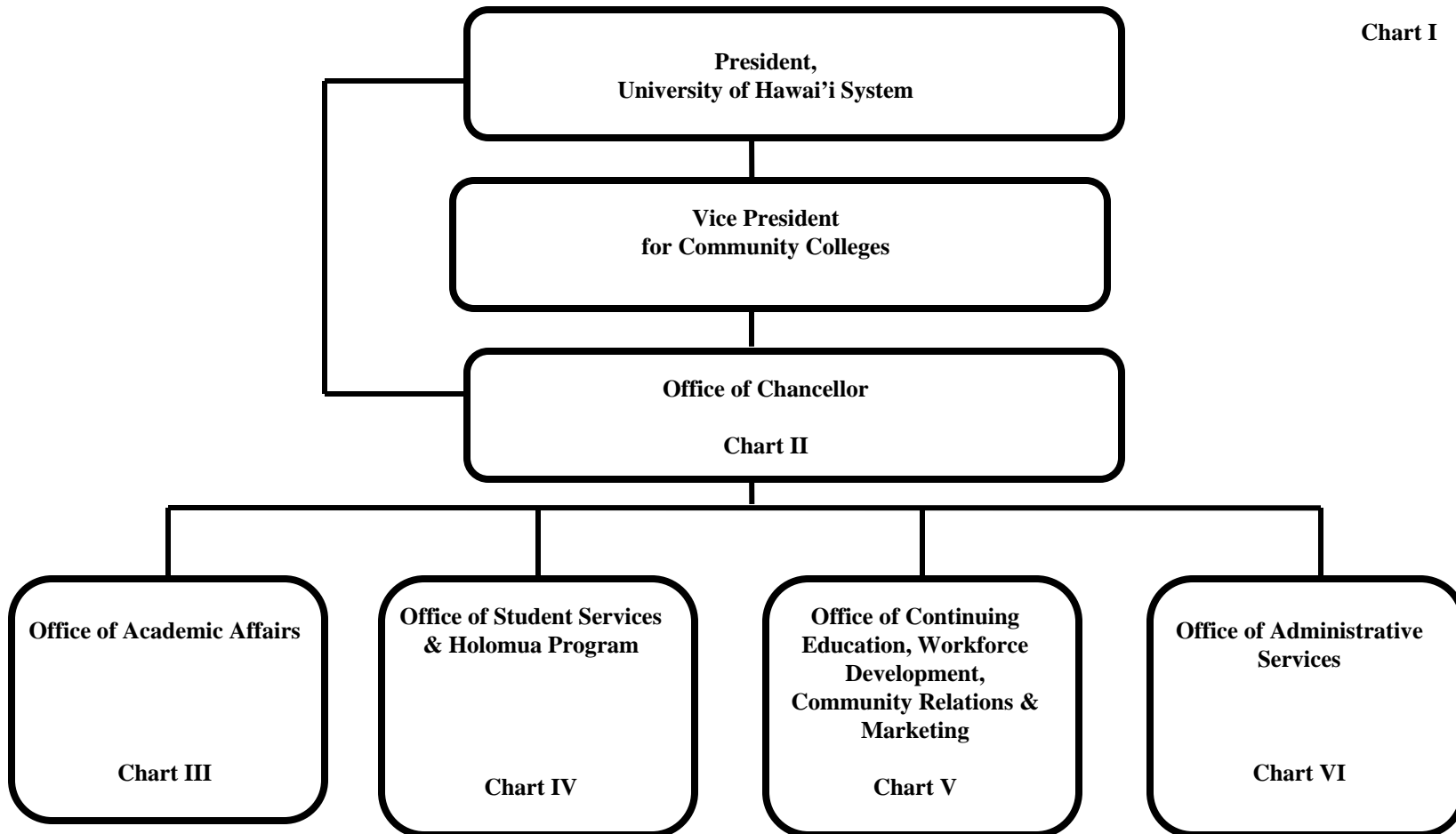
	<u>Perm</u>
General Fund	360.00
(B) Special Funds	24.00

	<u>Temp</u>
	27.50

CHART UPDATED  
 JUL - 1 2006  
 DATE \_\_\_\_\_

Organization Chart

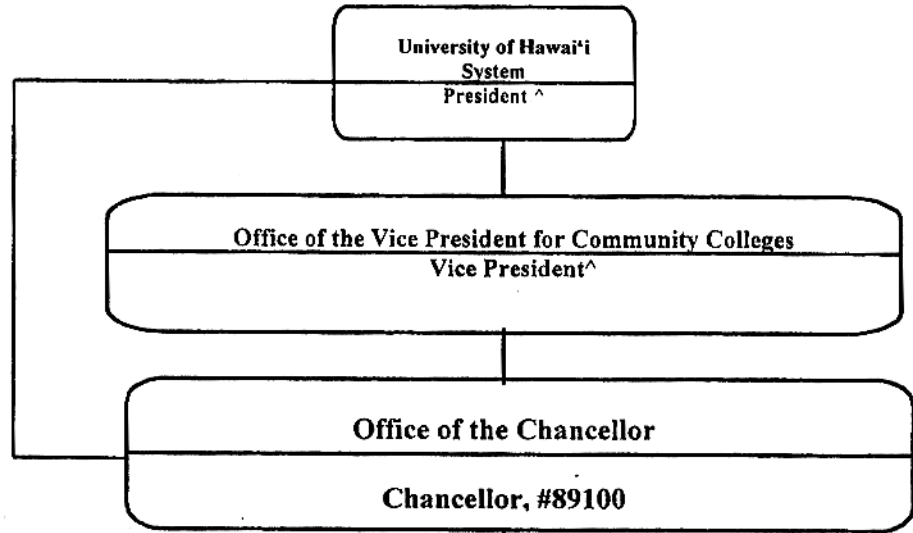
Chart I



STATE OF HAWAI'I  
 UNIVERSITY OF HAWAI'I  
 KAPI'OLANI COMMUNITY COLLEGE

Organization Chart

Chart II



Private Secretary II, SR22, #900112  
 Clerk Typist II, SR08, #900113\*  
 Assistant to Senior Executive, #89341  
 Secretary II, SR14, #47688

~~Office of Planning and Institutional Research  
 Administrative Officer, PBB, #77245  
 Faculty (1.00), #82232  
 Institutional Analyst, #97922F~~

^ Excluded from position count this chart  
 \*Temporary position  
 +Reorganization required to include three new position counts provided by the Legislature. Includes two faculty (97650F, 97651F) and one clerical support (97150F). Reorganization to follow.

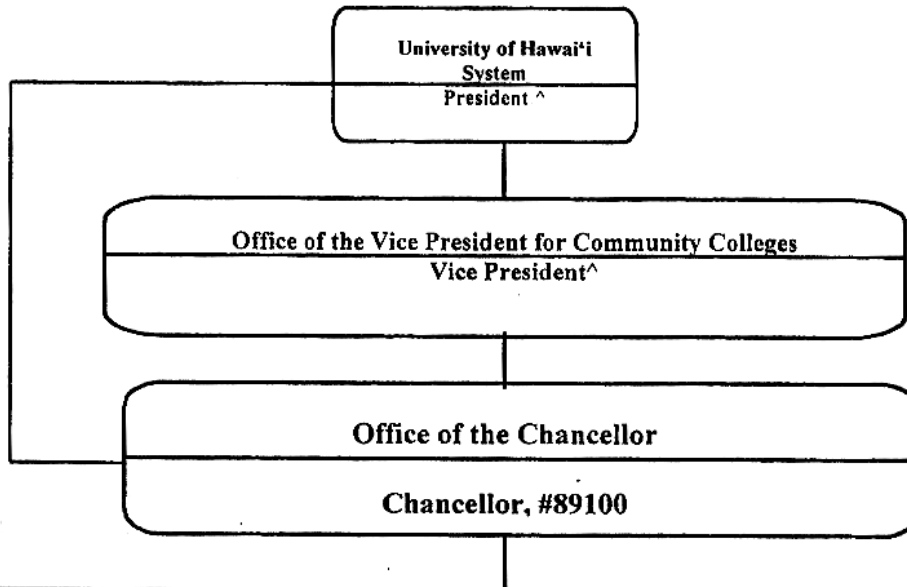
General Fund	<u>Perm</u> 10.00	<u>Temp</u> 1.00
--------------	----------------------	---------------------

**CHART UPDATED**  
 JUL - 1 2006  
 DATE \_\_\_\_\_

STATE OF HAWAII  
 UNIVERSITY OF HAWAII  
 KAPI'OLANI COMMUNITY COLLEGE

Organization Chart

Chart II



Private Secretary II, SR22, #900112  
 Clerk Typist II, SR08, #900113\*  
 Assistant to Senior Executive, #89341  
 Secretary II, SR14, #47688

Special Projects  
 -Planning  
 - Resource Development  
 - Accreditation  
 - Legislative Coordination  
 - International Education  
 -Facilities Development for Culinary Institute of the Pacific  
 - K-16 Pathways Partnerships

^ Excluded from position count this chart

\*Temporary position

+Reorganization required to include three new position counts provided by the Legislature. Includes two faculty (97650F, 97651F) and one clerical support (97150F). Reorganization to follow.

General Fund

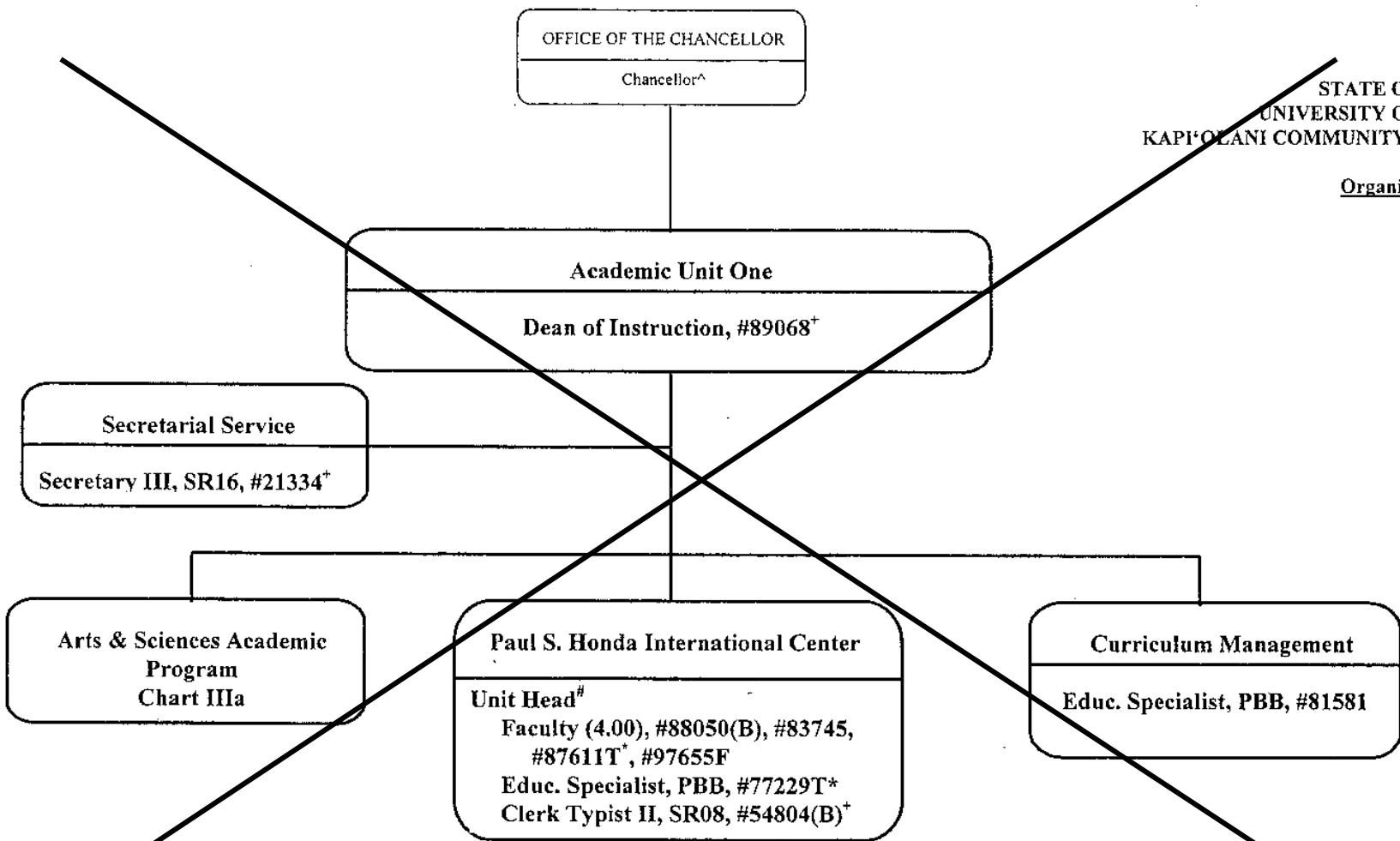
Perm

Temp

Chart Updated  
 11/22/06

Organization Chart

Chart III



^ Excluded from position count this chart  
 # Unit Head is appointed from among the faculty positions  
 \* Temporary Position  
 + To be redescribed & submitted for classification review

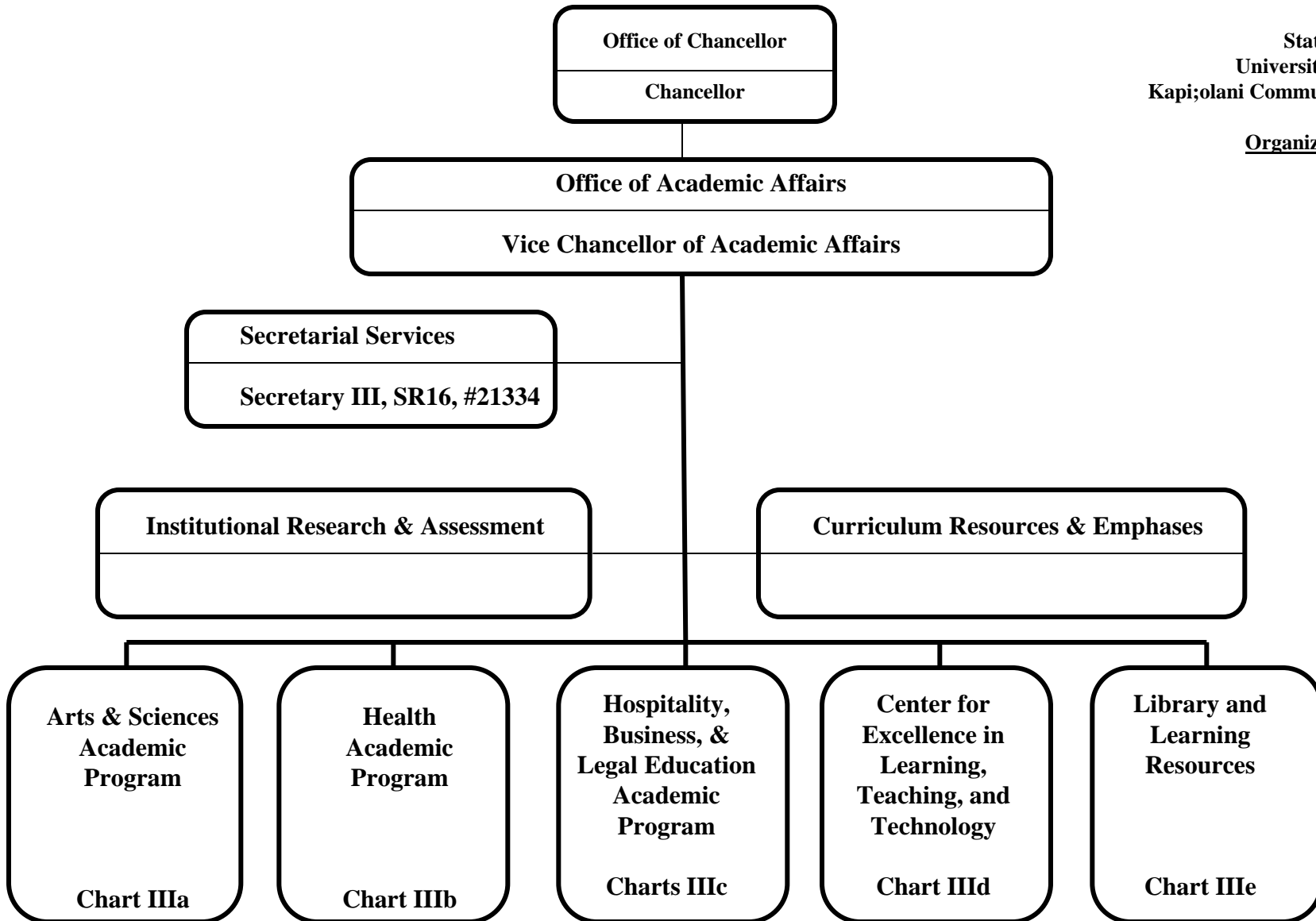
General Fund  
 (B) Special Funds

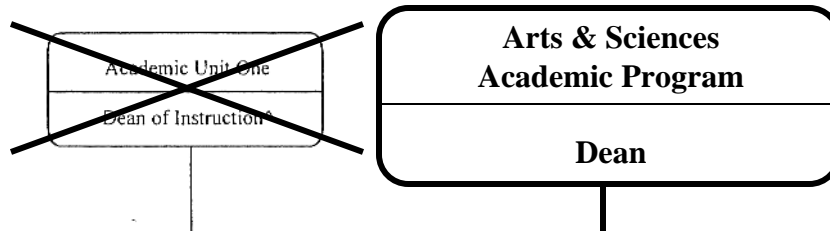
<u>Perm</u>	<u>Temp</u>
5.00	2.00
2.00	

CHART UPDATED  
 JUL - 1 2006  
 DATE \_\_\_\_\_

Organization Chart

Chart III





STATE OF HAWAII  
 UNIVERSITY OF HAWAII  
 KAPI'OLANI COMMUNITY COLLEGE

Organization Chart

Chart IIIa

Arts & Sciences Academic Program	
Humanities	
Chairperson <sup>^</sup>	
Faculty (25.00)	
Full-time:	#82052, #82607, #82631, #82803, #82840, #82876, #82925, #82937, #82983, #83094, #83809, #83967, #84470, #84882, #84971, #84974, #86602, #86640, #86937, #87184, #87402, #87404, #86696T*, 87072T*, #87074T*
Information Technology Specialist, PBA, #81068T*	
Language Arts	
Chairperson <sup>^</sup>	
Faculty (39.50)	
Full-time:	#82135, #82178, #82231, #82429, #82447, #82555, #82653, #82776, #83123, #83308, #83447, #83521, #83559, #83783, #83795, #83810, #83903, #84327, #84409, #84623, #84754, #86572, #86594, #86595, #86596, #86604, #86798, #86799, #86803, #86809, #86945, #86960, #87084T*, #87102, #87120, #87143T*, #87367, #87583T*, #87588
Part-time:	#82540 (0.50 FTE)
Mathematics/Science	
Chairperson <sup>^</sup>	
Faculty (30.00)	
Full-time:	#82031, #82394, #82492, #82910, #82981, #83096, #83262, #83357, #83688, #83733, #83939, #83974, #84458, #84836, #86585, #86592, #86593, #86600, #86606, #86627, #86631, #86718, #86754, #86827, #86830, #86845, #86959, #87401, #86947T*, #88032T*
Educational Specialist, PBA, #81246	
Social Sciences	
Chairperson <sup>^</sup>	
Faculty (12.00)	
Full-time:	#82152, #82706, #82935, #83492, #83560, #83642, #84972, #84973, #86599, #86649, #86938, #87403
Support Services Unit	
Unit Head <sup>#</sup>	
Faculty (5.50)	#82364, #83787, #86704, #82685, #82068, #86757 (0.50FTE)
Educational Specialist, PBB, #80778 (B)	
Secretary II, SR14, #22313	
Clerk Steno II, SR09, #34661	
Clerk-Typist II, SR08, #22310, #26658, #47612 (0.50 FTE), #47900 (0.50 FTE), #84370 (0.50 FTE)	

<sup>^</sup> Excluded from position count this chart

<sup>%</sup> Chairperson is appointed from among the faculty positions

<sup>#</sup> Unit Head is named from among the Chairpersons

<sup>\*</sup> Temporary Position

<sup>+</sup> To be redescribed & submitted for classification review

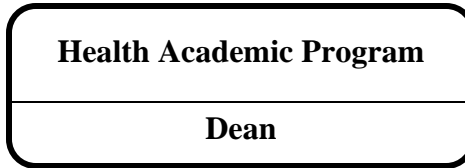
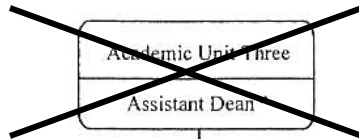
General Fund  
 (B) Special Funds

Perm  
 110.50  
 1.00

Temp  
 9.00

**Chart Updated  
 11/21/06**



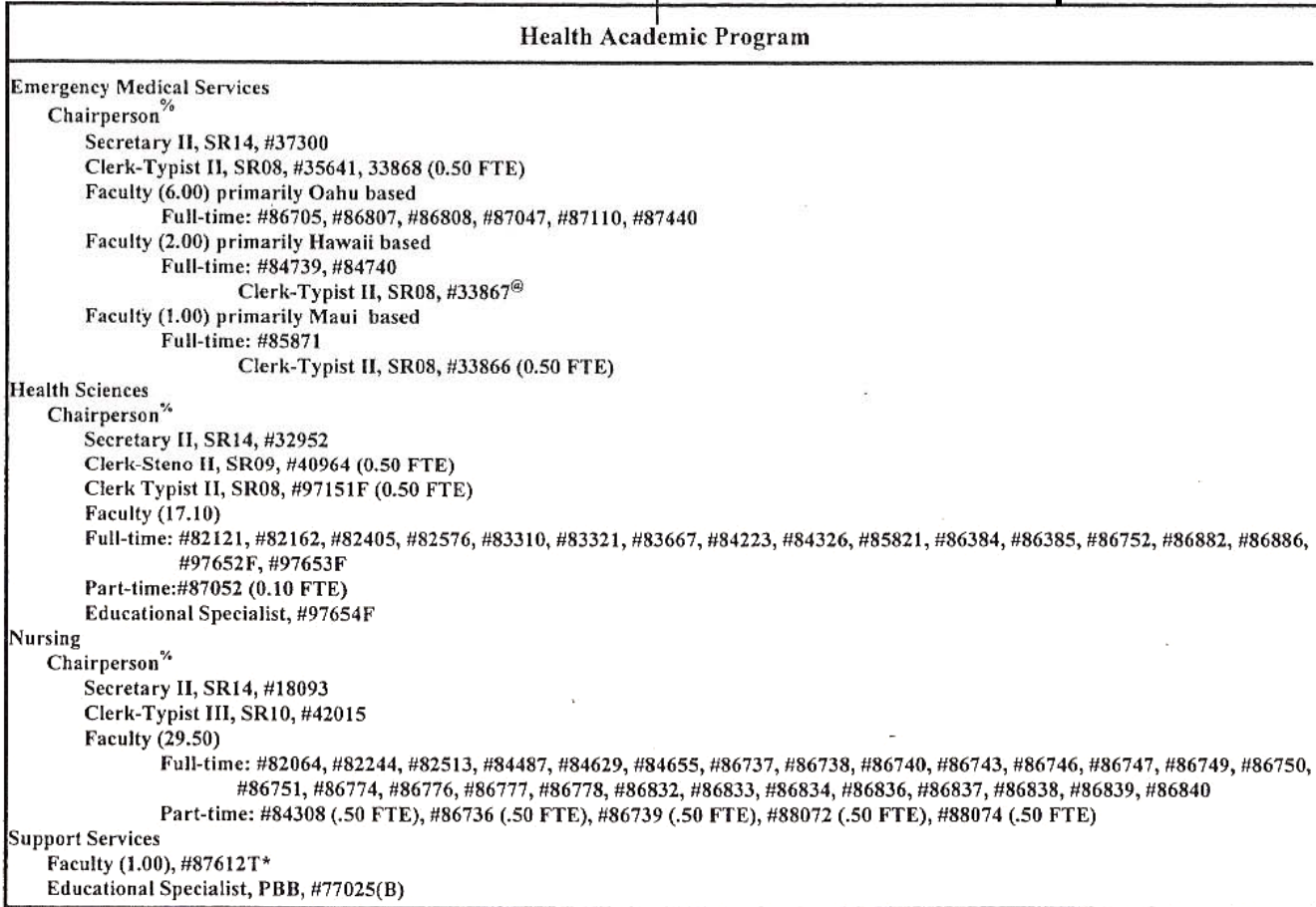


STATE OF HAWAII  
 UNIVERSITY OF HAWAII  
 KAPI'OLANI COMMUNITY COLLEGE

Organization Chart



**Chart IIIb**



^ Excluded from position count this chart

\* Temporary Position

% Chairperson is appointed from among the faculty positions

@ Supervised by one of the faculty positions

General Fund

(B) Special Funds

Perm

64.60

1.00

Temp

1.00

**Chart Updated**

**11/21/06**

Organization Chart

Chart IIIc

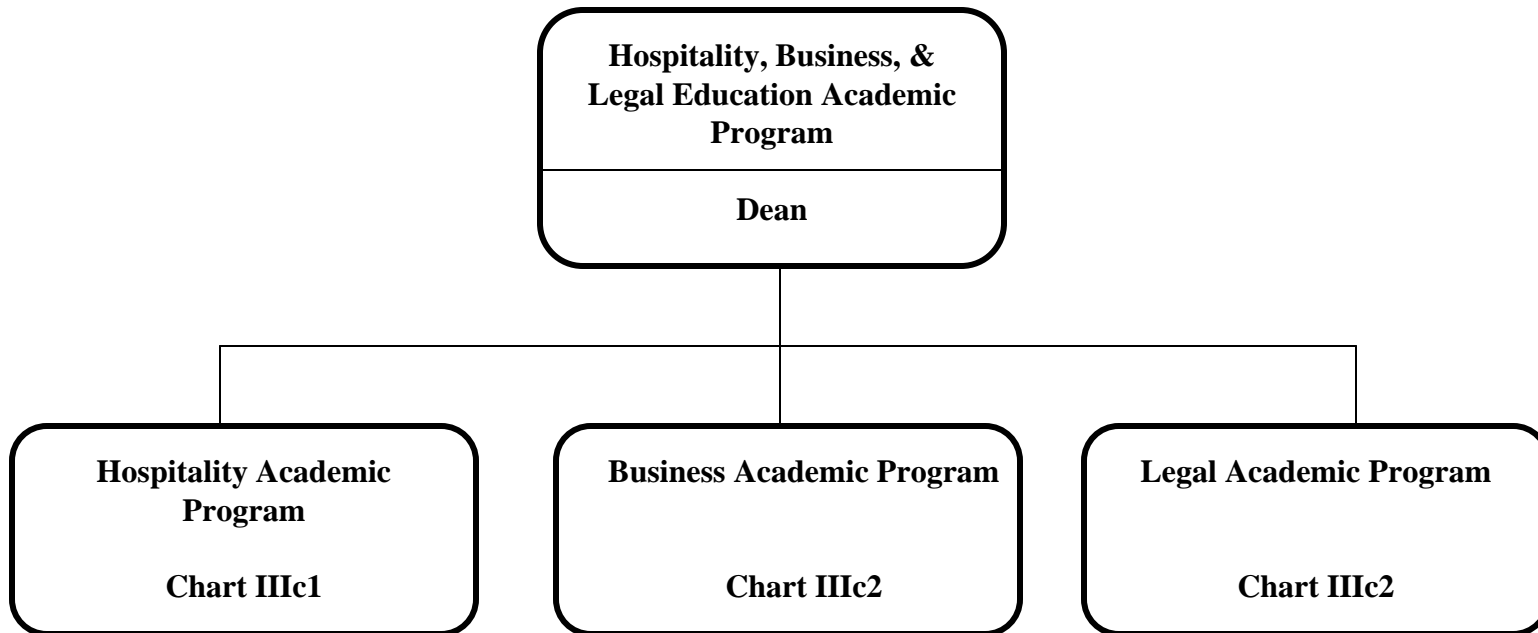
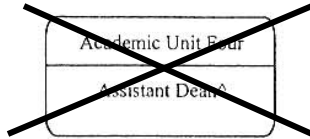


Chart Updated  
11/22/06

**Hospitality & Business  
Academic Program**

**Dean**



STATE OF HAWAII  
UNIVERSITY OF HAWAII  
KAPI'OLANI COMMUNITY COLLEGE

Organization Chart



**Chart IIIc1**

**Hospitality Academic Program**

**Culinary Institute of the Pacific**

**Program Director, #89029<sup>+</sup>**

**Chairperson<sup>%</sup>**

**Faculty (12.00)**

**Full-time: #82683, #82970, #83225, #83460, #83901, #84091, #84103, #84304, #84539, #86597, #86670, #86719**

**Secretary II, SR14, #16962**

**Cook III, WS 08, #22318 (B), #32863 (B)**

**Clerk III, SR08, #22319 (B)**

**Educational & Academic Support Specialist, PBA, #81304 (B), #81420 (B), #81422 (B)**

**Hospitality**

**Chairperson<sup>%</sup>**

**Faculty (7.00)**

**Full-time: #82066, #82467, #83133, #83684, #84369, #86742, #86715**

**Secretary II, SR 14, #44592<sup>+</sup>**

**Support Services**

**Faculty (2.00)**

**#86741**

**#86706(B)**

**Educational Specialist, PBA, #80617(B)**

<sup>^</sup> Excluded from position count this chart

<sup>\*</sup> Temporary Position

<sup>%</sup> Chairperson is appointed from among the faculty positions

<sup>+</sup> To be redescribed & submitted for classification review

General Fund  
(B) Special Funds

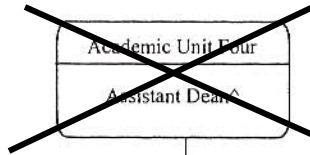
Perm  
23.00  
8.00

Temp

**Chart Updated  
11/21/06**

**Hospitality & Business  
Academic Program**

**Dean**



STATE OF HAWAII  
UNIVERSITY OF HAWAII  
KAPI'OLANI COMMUNITY COLLEGE

Organization Chart

~~Chart VII~~

**Chart IIIc2**

**Business Academic Program**

**Chairperson\***

Secretary II, SR14, #22312

Faculty (20.00)

Full-time: #82026, #82218, #82348, #82389, #82503, #82728, #82795, #82931, #83221, #83734, #83771, #84150,  
#84337, #86591, #86598, #86702(B)<sup>+</sup>, #86758, #86944(B), #87123, #87144T\*

Educational Specialist, PBA, #81429(B)<sup>+</sup>, #81923(B)

^ Excluded from position count this chart

\* Temporary Position

% Chairperson is appointed from among the faculty positions

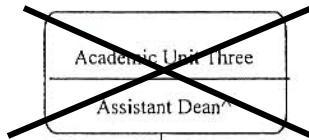
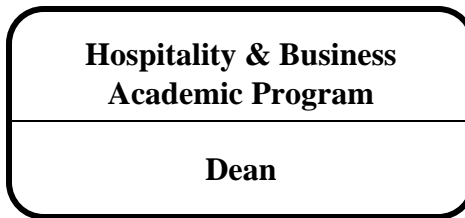
+ To be redescribed & submitted for classification review

General Fund  
(B) Special Funds

Perm  
18.00  
4.00

Temp  
1.00

**Chart Updated  
11/21/06**

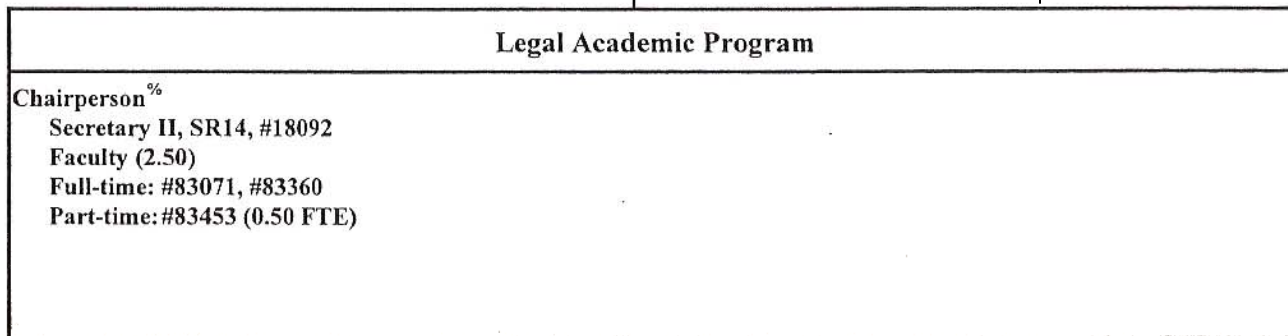


STATE OF HAWAII  
UNIVERSITY OF HAWAII  
KAPI'OLANI COMMUNITY COLLEGE

Organization Chart



**Chart IIIc3**



<sup>^</sup> Excluded from position count this chart

<sup>%</sup> Chairperson is appointed from among the faculty positions

General Fund

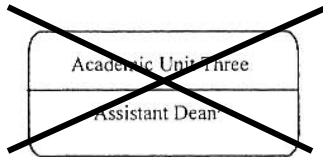
Perm  
3.50

Temp

**Chart Updated  
11/21/06**

Center for Excellence in Learning, Teaching and Technology

CELTT Unit Head



STATE OF HAWAII  
UNIVERSITY OF HAWAII  
KAPI'OLANI COMMUNITY COLLEGE

Organization Chart

~~Chart Vd~~

Chart III d

Center for Excellence in Learning, Teaching and Technology

~~Information & Media Technology Services~~

Unit Head<sup>#</sup>

Faculty (3.00)

#82386, #86711(B), #87603

Information Technology Specialist, PBB, #81535

Clerk III, SR08, #54823, #54825

Information Technology Specialist, PBC, #81384

Information Technology Specialist, PBB, #80529, #80340, #81627

Information Technology Specialist, PBA, #81220T\*

Information Technology Specialist, PBB, #81654

Electronic Technician, PBB, #80034

Electronic Technician, PBA, #81277

Audio Visual Technician I, BC07, #47350 (0.50 FTE)

~~Media Specialist, PBB, #80694~~

~~Graphic Artist, PBB, #81060~~

~~Offset Press Operator III, BC09, #39797~~

~~Offset Press Operator II, BC08, #47346 (0.50 FTE)~~

Secretary II, SR14, #21321

Clerk-Typist II, SR08, #42014\*, #48451

<sup>^</sup> Excluded from position count this chart

\* Temporary position

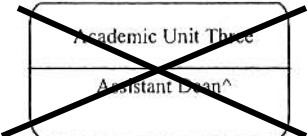
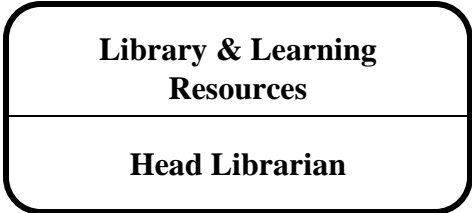
<sup>#</sup> Unit Head is appointed from among the faculty positions

General Fund  
Special Fund

Perm

Temp

Chart Updated  
11/21/06

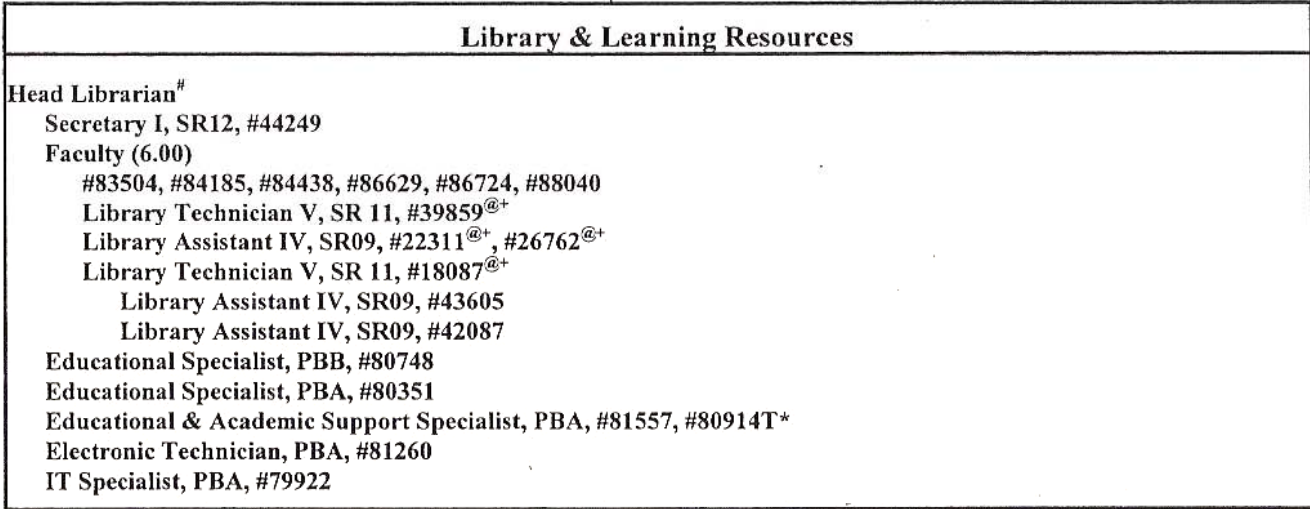


STATE OF HAWAII  
 UNIVERSITY OF HAWAII  
 KAPI'OLANI COMMUNITY COLLEGE

Organization Chart



Chart IIIe



^ Excluded from position count this chart  
 \* Temporary position  
 # Head Librarian is appointed from among the faculty positions  
 @ Supervised by one of the faculty positions  
 + To be redescribed & submitted for classification review

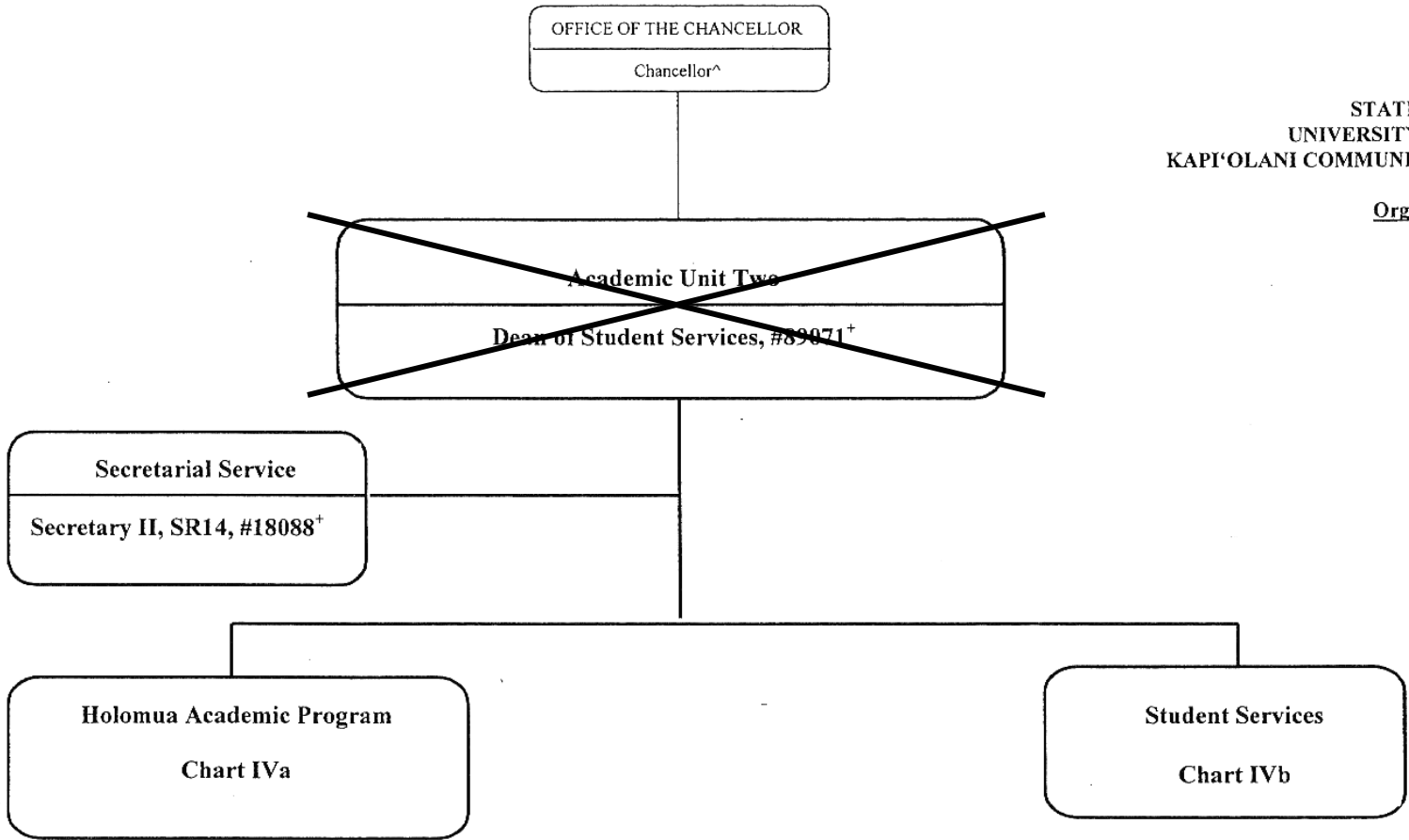
	<u>Perm</u>	<u>Temp</u>
General Fund	18.00	1.00

**Chart Updated  
 11/21/06**

STATE OF HAWAII  
UNIVERSITY OF HAWAII  
KAPI'OLANI COMMUNITY COLLEGE

Organization Chart

Chart IV



^ Excluded from position count this chart

† To be redescribed & submitted for classification review

General Fund

Perm  
2.00

Temp

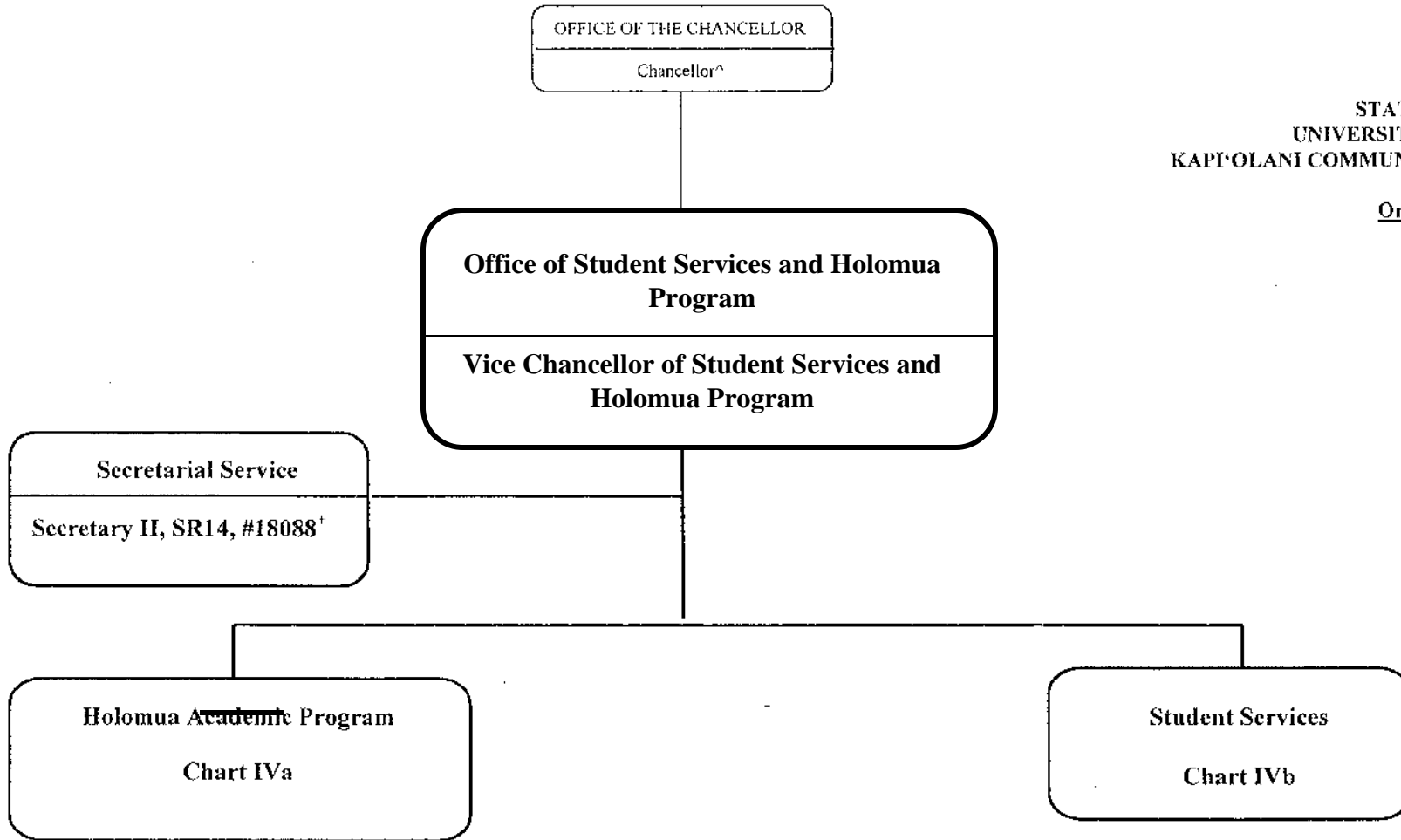
CHART UPDATED  
JUL - 1 2006  
DATE \_\_\_\_\_



STATE OF HAWAII  
UNIVERSITY OF HAWAII  
KAPI'OLANI COMMUNITY COLLEGE

Organization Chart

Chart IV



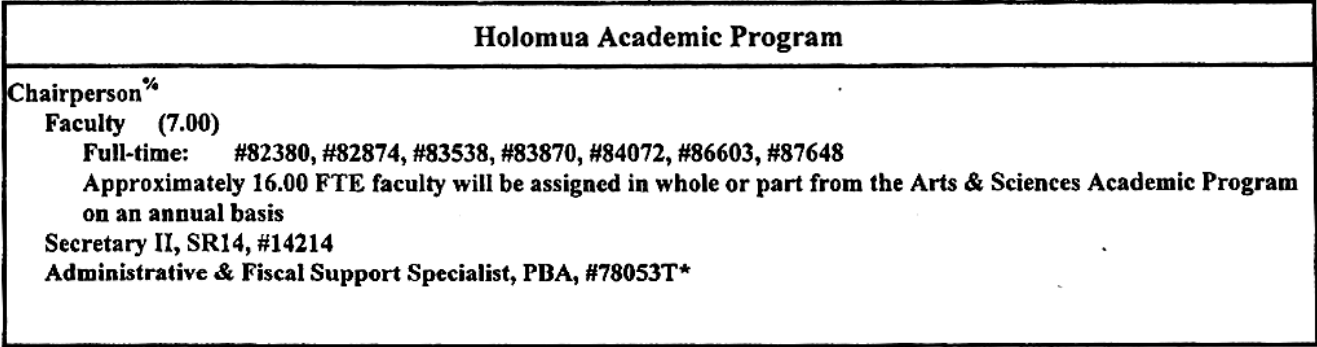
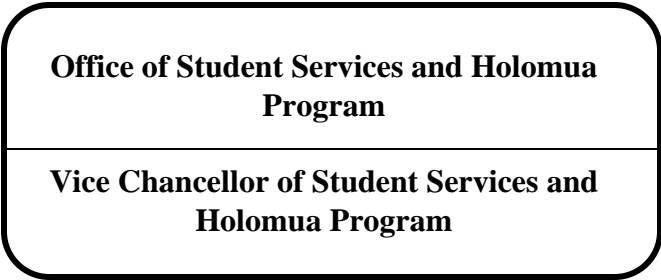
^ Excluded from position count this chart  
^ To be redescribed & submitted for classification review

General Fund

Perm  
2.00

Temp

**Chart Updated**  
**11/22/06**



^ Excluded from position count this chart  
 \* Temporary Position  
 % Chairperson is appointed from among the faculty positions

General Fund	<u>Perm</u> 8.00	<u>Temp</u> 1.00
--------------	---------------------	---------------------

**Office of Student Services and Holomua  
Program**

**Vice Chancellor of Student Services and  
Holomua Program**

STATE OF HAWAII  
UNIVERSITY OF HAWAII  
KAPI'OLANI COMMUNITY COLLEGE

Organization Chart

Chart IVb

**Student Services**

**Faculty (3.50)**

#83453 (0.50 FTE), #87649, #83387, #97656F

**Special Services Unit Head<sup>#</sup>**

Clerk-Steno II, SR09, #27004<sup>+</sup>

Educational Specialist, PBA, #81761<sup>+</sup>

Student Services Specialist, PBA, #96660F<sup>++</sup> (0.50 FTE)

**Kekaulike Information and Service Center**

Student Services Specialist, PBB, #81615<sup>+</sup>

Student Services Specialist, PBB, #80257<sup>+</sup>

Instructional and Student Support, PBA, #78155T\*, #78156T\*

Clerk IV, SR10, #11485<sup>+</sup>, #18086<sup>+</sup>, #44254<sup>+</sup>, #54813<sup>+</sup>

Student Services Specialist, PBB, #77724

Student Services Specialist, PBB, #77331 (B)<sup>+</sup>

Instructional and Student Support, PBA, #77953T\*

Clerk-Typist III, SR10, #09169<sup>+</sup>, #22315<sup>+</sup>

Clerk IV, SR10, #41320(B)<sup>+</sup>, #44160<sup>+</sup>

Student Services Specialist, PBB, #81547<sup>+</sup>

Student Services Specialist, PBB, #81878<sup>+</sup>, #81887<sup>+</sup>

Student Services Specialist, PBA, #77773

Instructor (Counselor), #83329<sup>+</sup>

<sup>^</sup> Excluded from position count this chart

<sup>\*</sup> Temporary Position

<sup>#</sup> Unit head is appointed from among the faculty positions

<sup>+</sup> To be redescribed & submitted for classification review

General Fund  
(B) Special Fund

Perm  
20.50  
2.00

Temp  
3.50

**Chart Updated  
11/21/06**

Organization Chart

Chart V

OFFICE OF THE CHANCELLOR  
Chancellor^

Academic Unit Three  
Assistant Dean, #89052<sup>+</sup>

Secretarial Service  
Secretary II, SR14, #29222<sup>+</sup>

Health Academic Program  
Chart Va

Legal Academic Program  
Chart Vb

Library & Learning Resources  
Chart Vc

Information & Media Technology Services  
Chart Vd

^ Excluded from position count this chart  
<sup>+</sup> To be redescribed & submitted for classification review

General Fund

Perm  
2.00

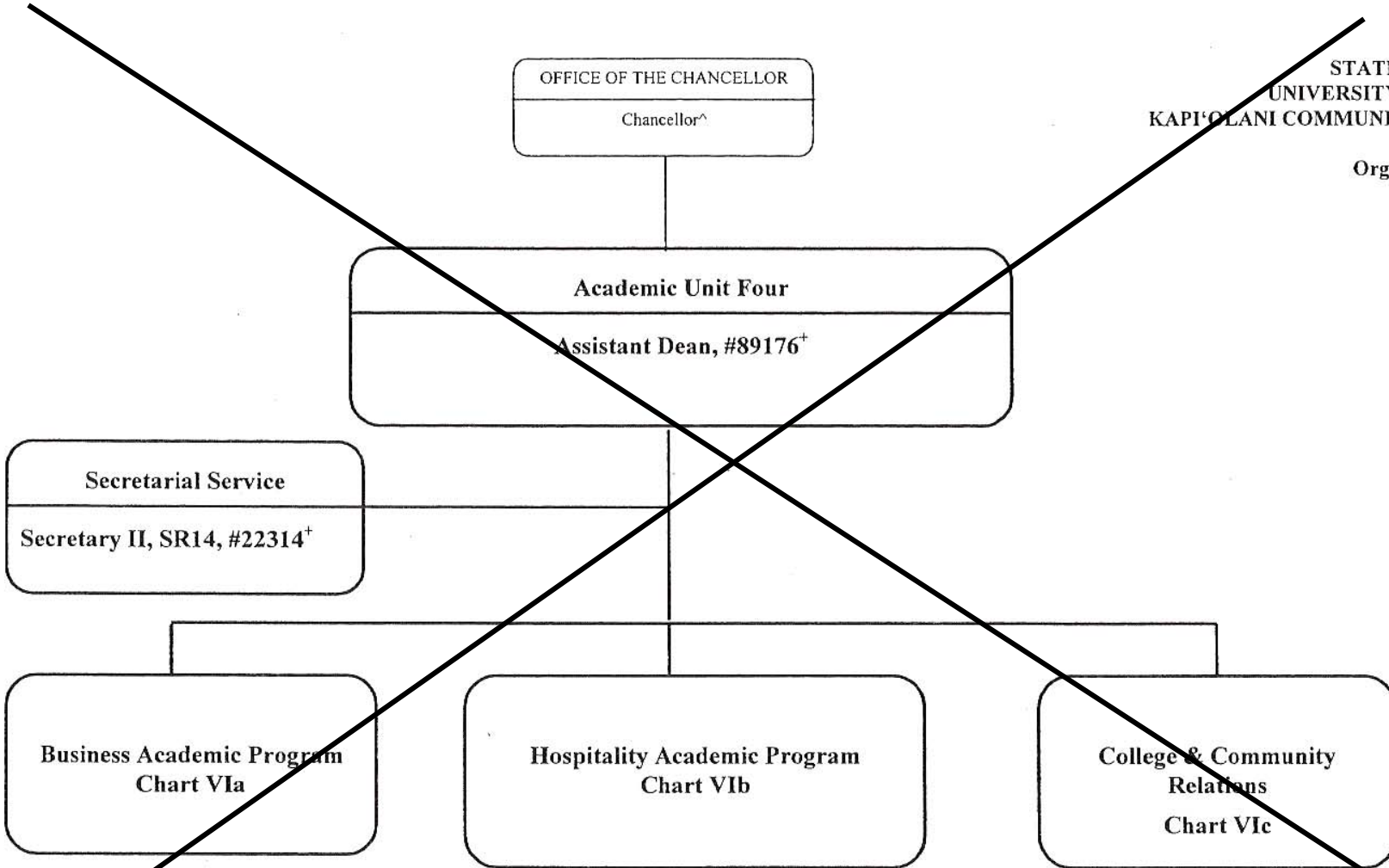
Temp

CHART UPDATED  
JUL - 1 2006  
DATE \_\_\_\_\_

STATE OF HAWAII  
UNIVERSITY OF HAWAII  
KAPI'OLANI COMMUNITY COLLEGE

Organization Chart

Chart VI



^ Excluded from position count this chart

+ To be redescribed & submitted for classification review

General Fund

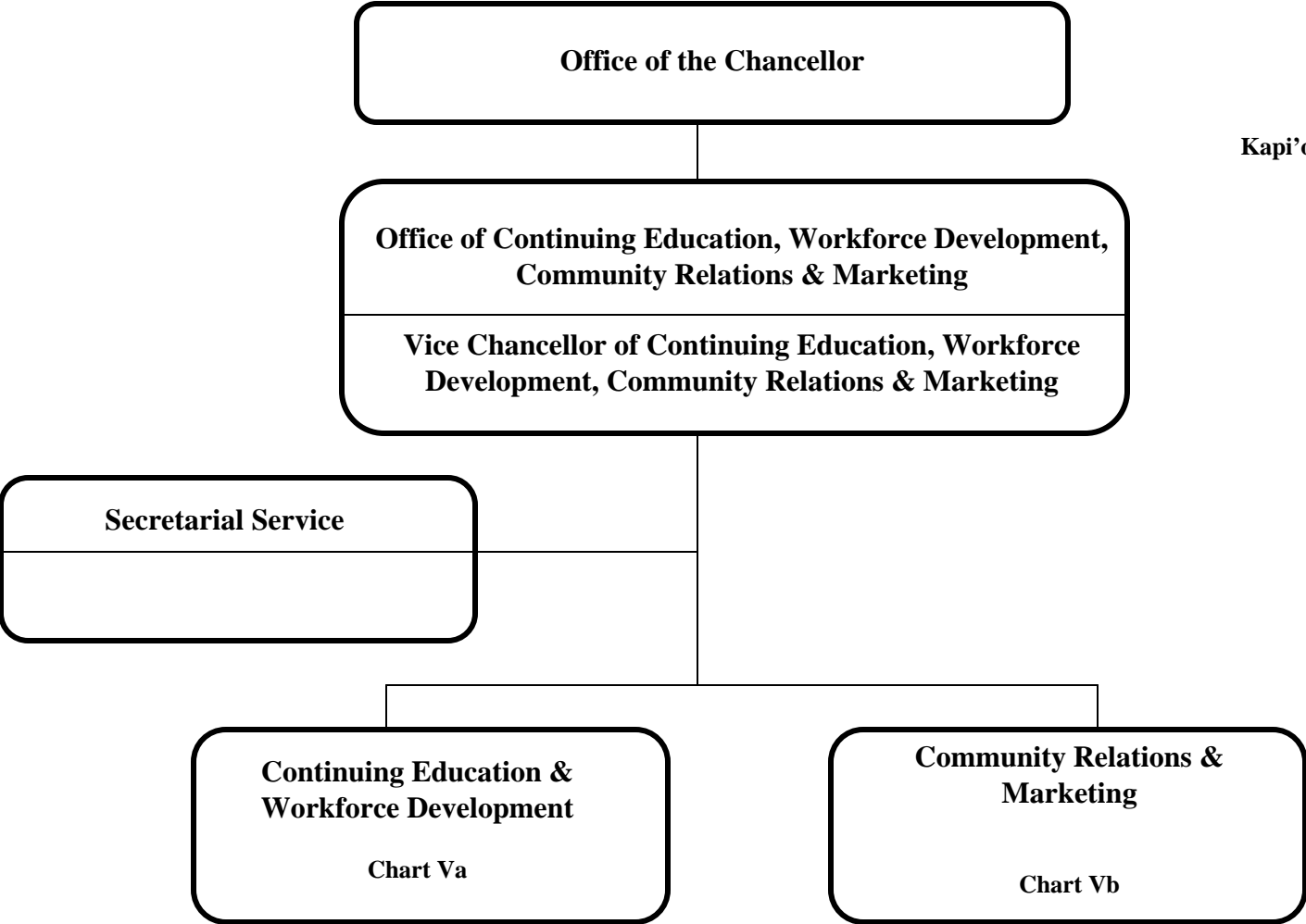
Perm  
2.00

Temp

CHART UPDATED  
DATE JUL - 1 2006

Organization Chart

Chart V



**Office of Continuing Education, Workforce  
Development, Community Relations & Marketing**

**Vice Chancellor of Continuing Education, Workforce  
Development, Community Relations & Marketing**

**State of Hawai'i  
University of Hawai'i  
Kapi'olani Community College**

**Organization Chart**

**Chart Va**

**Continuing Education & Workforce Development**

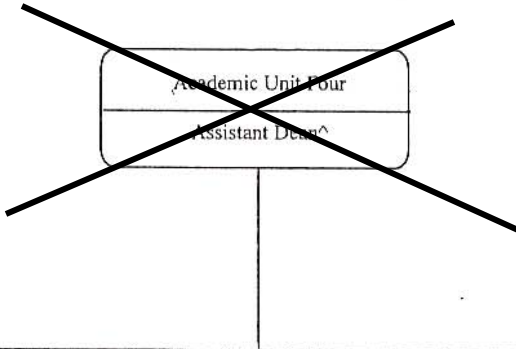
**Chart Updated  
11/22/06**

**Office of Continuing Education, Workforce  
Development, Community Relations & Marketing**

---

**Vice Chancellor of Continuing Education, Workforce  
Development, Community Relations & Marketing**

STATE OF HAWAII  
UNIVERSITY OF HAWAII  
KAPI'OLANI COMMUNITY COLLEGE



Organization Chart

~~Chart Vc~~

Chart Vb

<u>College &amp; Community Relations &amp; Marketing</u>
Student Services Specialist, PBB, #80082 (B) Clerk-Steno III, SR11, #35948 (B) <sup>+</sup> Clerk-Typist II, SR08, #27015 <sup>+</sup> , #54811 <sup>+</sup> Faculty (2.00) #86701(B) <sup>+</sup> , #86794(B) <sup>+</sup>

<sup>^</sup> Excluded from position count this chart

<sup>\*</sup> Temporary Position

<sup>+</sup> To be redescribed & submitted for classification review

	<u>Perm</u>	<u>Temp</u>
General Fund	2.00	
(B) Special Funds	4.00	

**Chart Updated  
11/22/06**

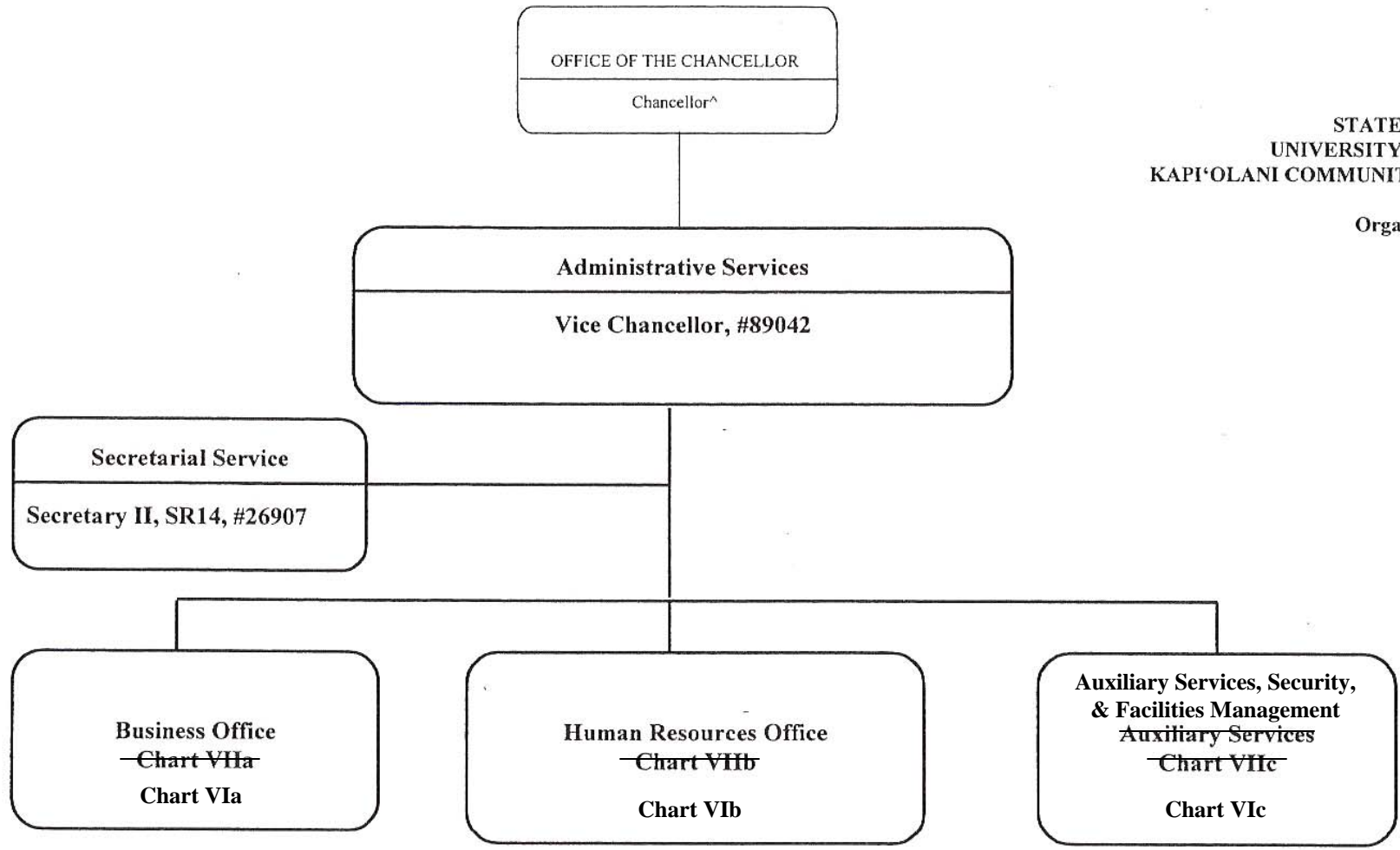


STATE OF HAWAII  
 UNIVERSITY OF HAWAII  
 KAPI'OLANI COMMUNITY COLLEGE

Organization Chart

~~Chart VII~~

Chart VI



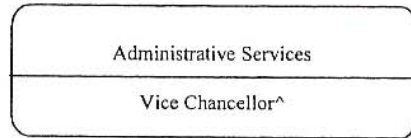
^ Excluded from position count this chart

General Fund

Perm  
2.00

Temp

Chart Updated  
 11/22/06

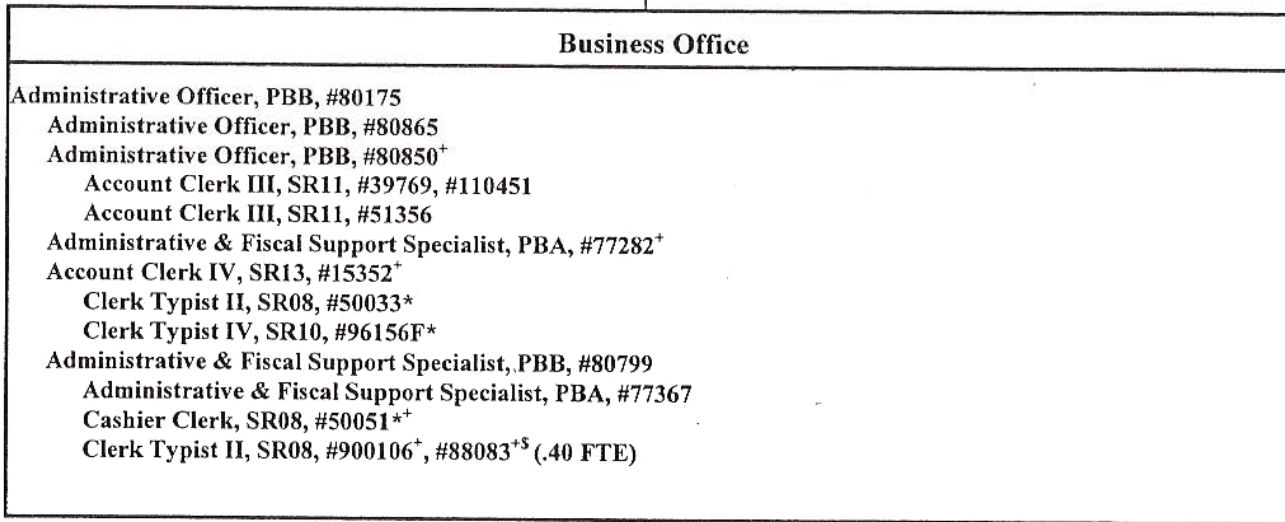


STATE OF HAWAII  
UNIVERSITY OF HAWAII  
KAPI'OLANI COMMUNITY COLLEGE

Organization Chart



Chart VIa



<sup>^</sup> Excluded from position count this chart

\* Temporary Position

<sup>+</sup> To be redescribed & submitted for classification review

<sup>5</sup> Proposed position classification

General Fund

Perm  
11.40

Temp  
3.00

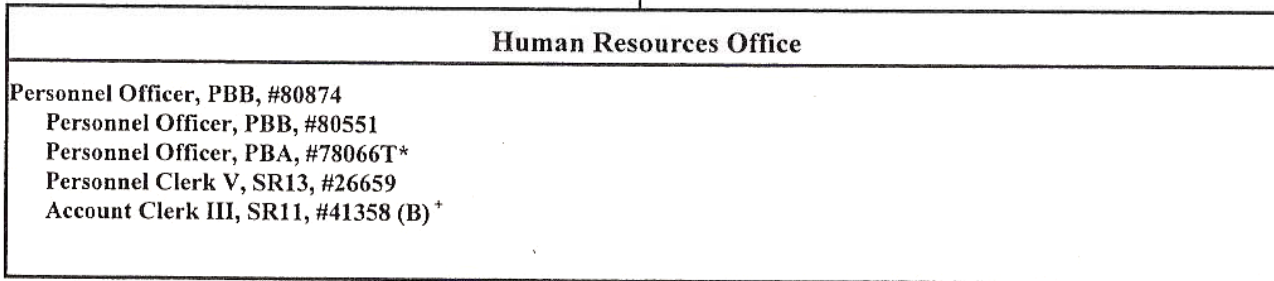
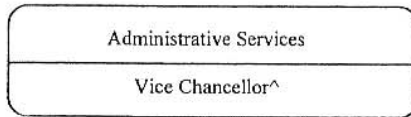
**Chart Updated**  
**11/21/06**

STATE OF HAWAII  
 UNIVERSITY OF HAWAII  
 KAPI'OLANI COMMUNITY COLLEGE

Organization Chart

~~Chart VIb~~

Chart VIb

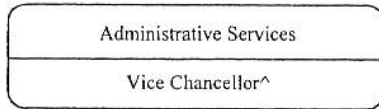


^ Excluded from position count this chart

†To be redescribed & submitted for classification review

	<u>Perm</u>	<u>Temp</u>
General Fund	3.00	1.00
(B) Special Funds	1.00	

**Chart Updated  
 11/21/06**

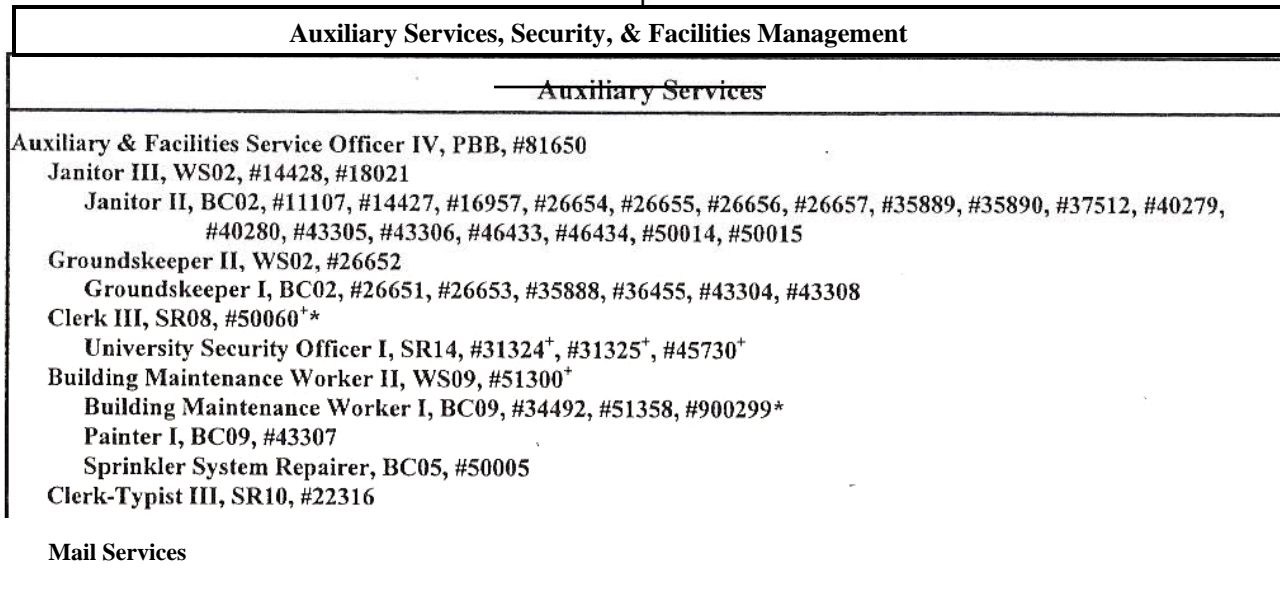


STATE OF HAWAII  
UNIVERSITY OF HAWAII  
KAPI'OLANI COMMUNITY COLLEGE

Organization Chart

~~Chart VIc~~

Chart VIc



^ Excluded from position count this chart

\* Temporary Position

+ To be redescribed & submitted for classification review

General Fund

Perm

Temp

**Chart Updated  
11/21/06**