

Student Forum with the Chancellor

**Leon Richards
Chancellor**

October 31, 2007
Illima 202 B/C



UNIVERSITY of HAWAII®
KAPI'OLANI
COMMUNITY COLLEGE



Reorganizing
the
College

<http://quill.kcc.hawaii.edu/page/reorg>



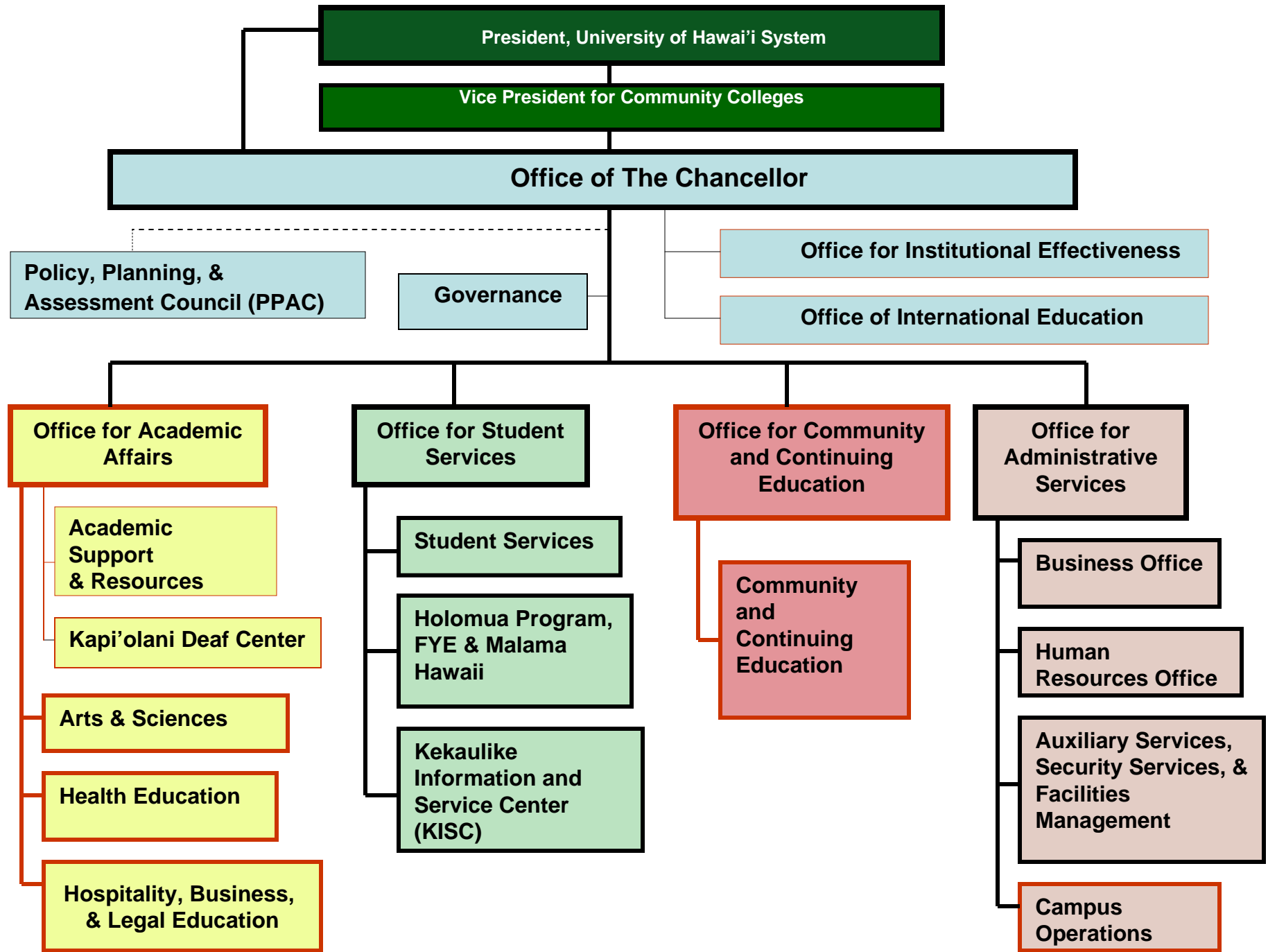
Reorganization Proposal



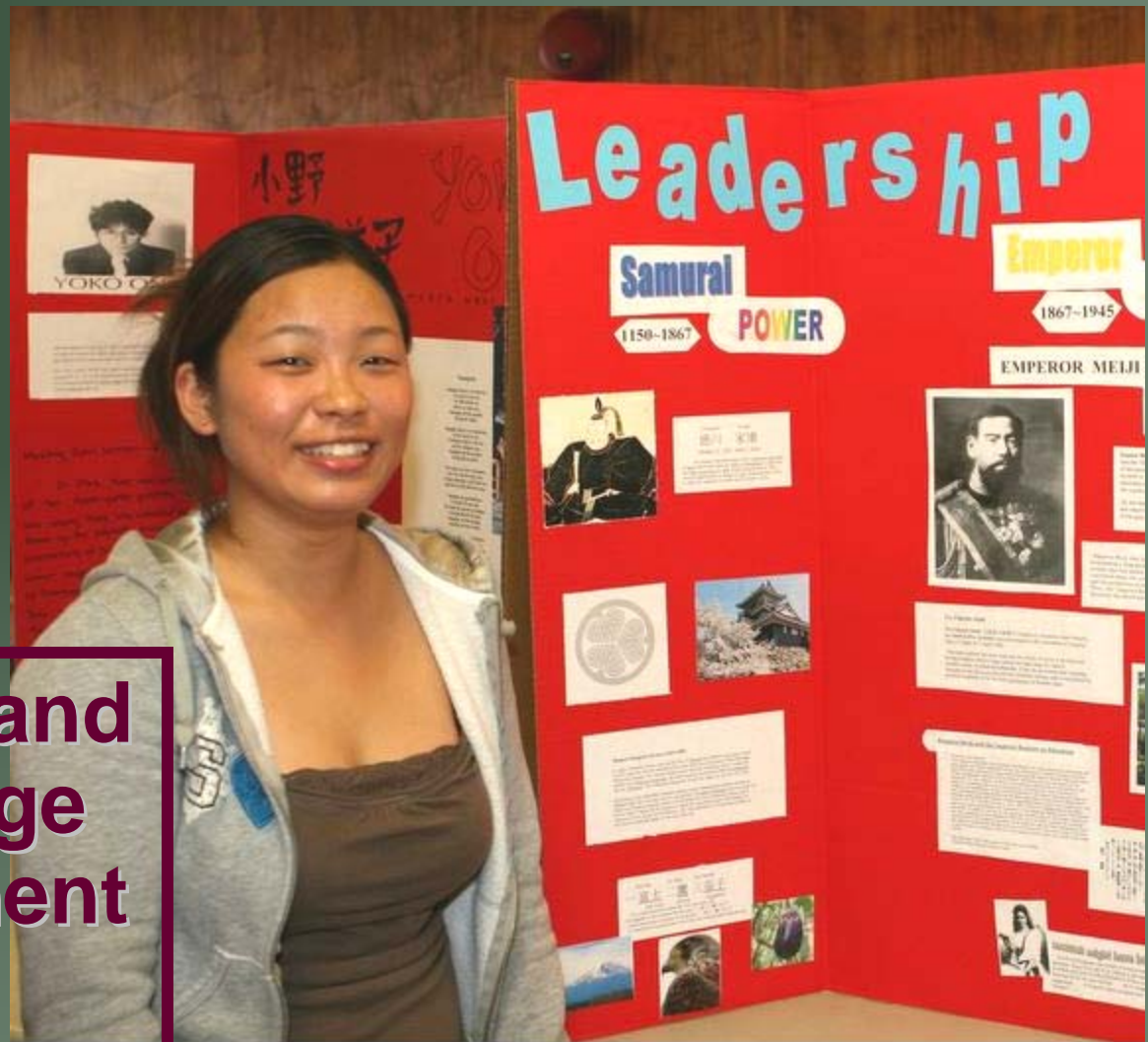
Easier to **consolidate** alike functions in the major areas of the College;

Easier to establish **academic & student services clusters**;

Easier to implement **degree pathways and student engagement and success Pathways model.**



- **Strategic and Long Range Development Plans – Update 2008-2015**



Strategic & Long Range Development Plans

- Starts with:

what we are about,

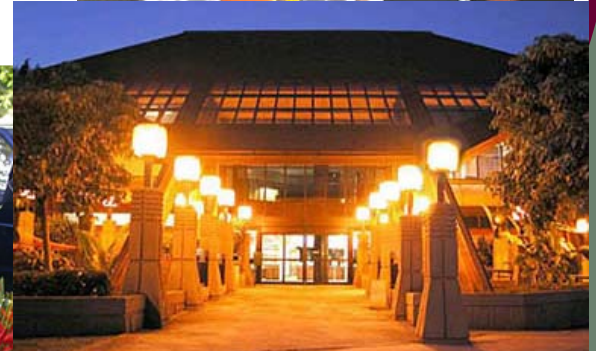
our goals,

who we are,



UNIVERSITY of HAWAII*
KAPI'OLANI
COMMUNITY COLLEGE

our mission,



our objectives,

our physical campus.

our stakeholders....and...

Strategic & Long Range Development Plans

- Identify **academic, educational and physical development** needed to achieve academic goals and meet and enhance its mission in the future, and
- Explore & explain, given the present efforts, **additional programs and future space needs** of the College.



Strategic & Long Range Development Plans

- Develop *comprehensive plans* that guide the College's academic and physical development such as *new and enhanced* present programs and the location of buildings, open space, circulation, and other land uses, respectively.



**Integrated
Student
*Engagement
& Success*
Pathway Model**

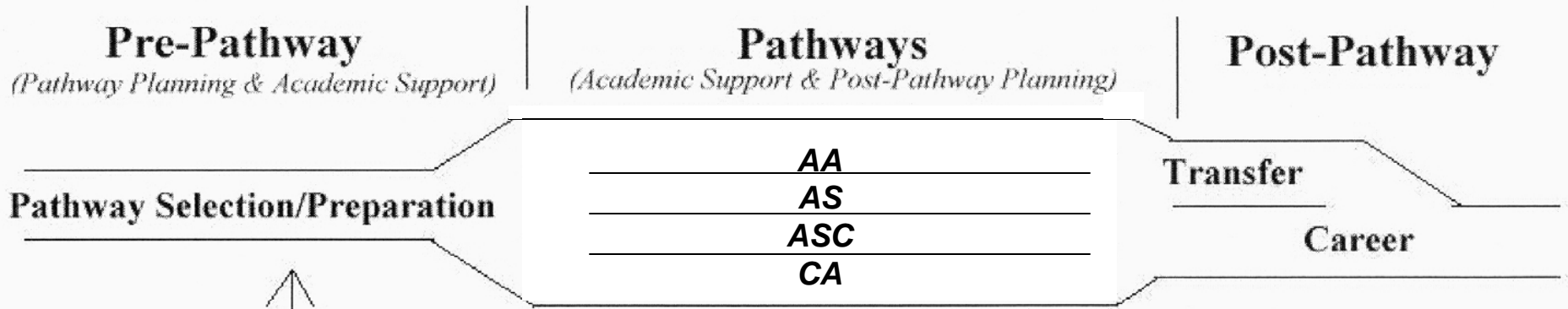


Student Engagement & Success Pathway Model

- Plan for *transition* from High School to College
- Plan for academic *access and success*
- Plan for *transfer* or career employment, and
- Plan for maintaining and upgrading skills through continued career development & community involvement



Student Engagement & Success Pathway Model



FYE
Malama
Holomua
STEM
KCC High School/College
Connection Program
Gear-Up
Running Start
Career In-Service
American Diploma Project
Achieving the Dream
Math Success Project (NASH)

e-Portfolios
Ka'ie'ie
Learning Support
Academic Support
Co-curricular
CAAC

Pathways Support: KISC, CELTT



Student Engagement & Success Pathway Model

- Student Hub
- Relocation of Student Congress



KCC

UHM



Ka`ie`ie -

A degree pathway partnership agreement through which students can be enrolled in both UHM and KCC campuses and earn two degrees



KCC

UHM

Ka`ie`ie

Ka`ie`ie students are considered continuing UH Manoa students upon transfer.

- Ka`ie`ie program paths to UH Manoa:

1. Apply to UHM, be accepted but **declare KCC as your home institution** and take courses at KCC;
2. *Begin at KCC and apply to UHM as a Ka`ie`ie student after earning 24 credits, and maintaining a 2.0 GPA at KCC; when accepted to UHM **continue taking classes at KCC**, indicating it as your home institution.*



Scholarships and Financial Aid

- Through the generous support of individuals and private organizations in the community, **over 50 scholarships** are awarded each academic year throughout the campus. They range in value from \$500-\$3,600.
- In general, scholarships are awarded on the basis of **financial need**, not necessarily as defined by federal guidelines, to continuing students only. Many also have a **minimum grade point average requirement**.



Scholarships and Financial Aid

- **Private Scholarships Available at KCC in the following fields of study:**
 - **Art** – John Young Foundation Scholarship
 - **Business** – American Business Women's Association (\$500); *J.M. Long Foundation
 - **Health Sciences** – Harry and Miyako Fujikawa Student Aid Award; Dr. M. Lou Hefley Scholarship; The Queen's Health Systems Native Hawaiian Health Training Scholarship Fund; Straub Hospital Auxiliary Scholarship;
 - **Liberal Arts** – James Embrey Memorial Scholarship;
 - **Nursing** – Dora Locascio Scholarship; **Murabayashi Foundation; Straub Hospital Auxiliary Scholarship for Licensed Practical Nursing;
 - **Radiologic Technology** – Lloyd/More Foundation



*Health or Business

** Student must speak Korean

Scholarships and Financial Aid

- **Native Hawaiian Tuition Waiver**
- **KCC Opportunity Grant**
(formerly need-based institutional waivers)
- **KCC Achievement Scholarship**
(formerly merit tuition waivers)
- **KCC Pacific Islander Scholarship**
- **International Student Scholarship**
- **UH Centennial Scholarship**



Health and Safety

- Health & Safety measures being taken on campus:
 - Improved Lighting
 - Increased Security



Parking

- During the first three weeks of the Fall 2007 semester, KCC provided extra parking for its students, faculty and staff through arrangements with:
 - the Hawai`i State Department of Land and Natural Resources for parking on the makai side of DH Road;
 - Diamond Head Theater, providing valet service for those parking at the Theater.
 - Further development of parking capacity will be reviewed in the Long Range Development Plan.



Summary



- **Goals**

- Approval of *Re-organization Proposal*
- Recruitment and filling of *Vice Chancellor for Academic Affairs & 3 Program Deans*
- Establishment of a consolidated *Office for Institutional Effectiveness*
- Completion of the *Strategic & Long Range Development Plans*
- Completion of *Academic Clusters* to include the implementation of the UHM/KCC Degree Pathway Program (Ka'ie'ie) in at least 5 academic program areas
- Increase access and success for Native Hawaiian and other underrepresented student populations through the Student Engagement and Success Pathway Model
- Implementation of the consolidation of the *Office of Community and Continuing Education*

Student Forum with the Chancellor

**Leon Richards
Chancellor**

**October 31, 2007
Illima 202 B/C**



UNIVERSITY of HAWAII™
KAPĪ'OLANI
COMMUNITY COLLEGE

