

*Kapi'olani Community College*  
General Faculty & Staff Meeting  
**Fall 2007**



August 16, 2007

**Leon Richards,  
Chancellor**

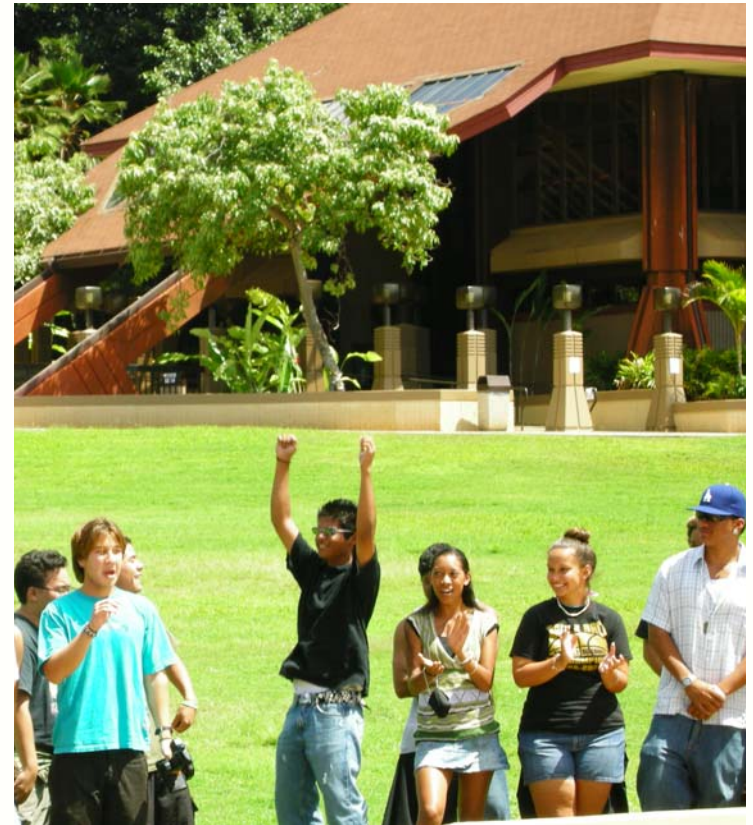
- **The Reorganization Proposal**

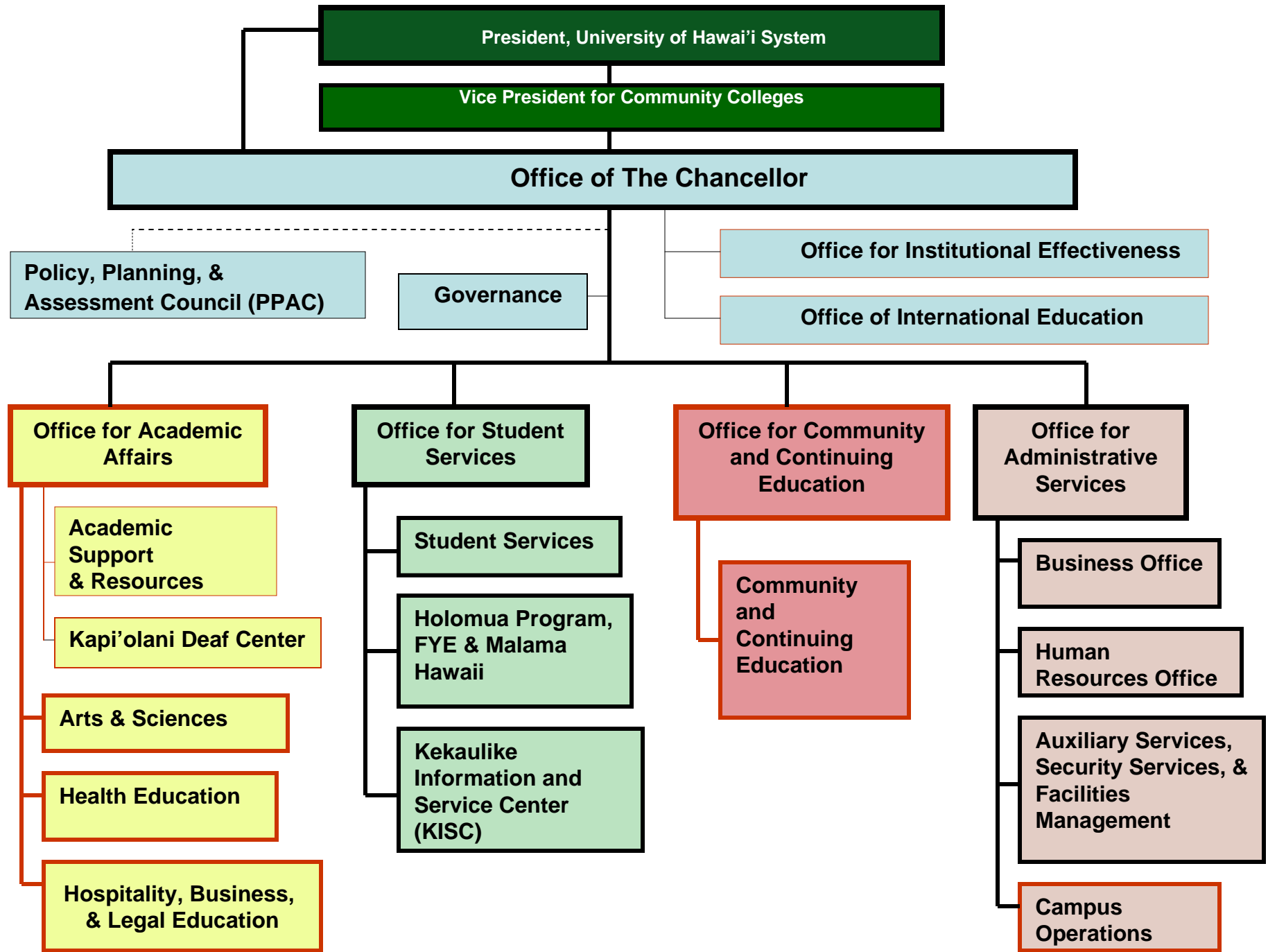


<http://quill.kcc.hawaii.edu/page/reorg>

# Reorganization Proposal

- Easier to **consolidate** alike functions in the major areas of the College;
- Easier to establish **academic and student services clusters**;
- Easier to implement **degree pathways and student engagement and success *Pathways* model.**





**Kapi'olani CC's**

**Integrated**

**Purposeful**

**Pathways**



# KapCC's Integrated Purposeful Pathways

- Curriculum mapping of industry area



# KapCC's Integrated Purposeful Pathways

- **Identify job and career skills, knowledge and attitudes (SKA)**



# KapCC's Integrated Purposeful Pathways

- Use DACUM curriculum model to assign and re-align SKA clusters





# KapCC's Integrated Purposeful Pathways

- Develop **career-laddered program sequences** at CC, CA and AS degree exit points that tie to the jobs and careers in industry

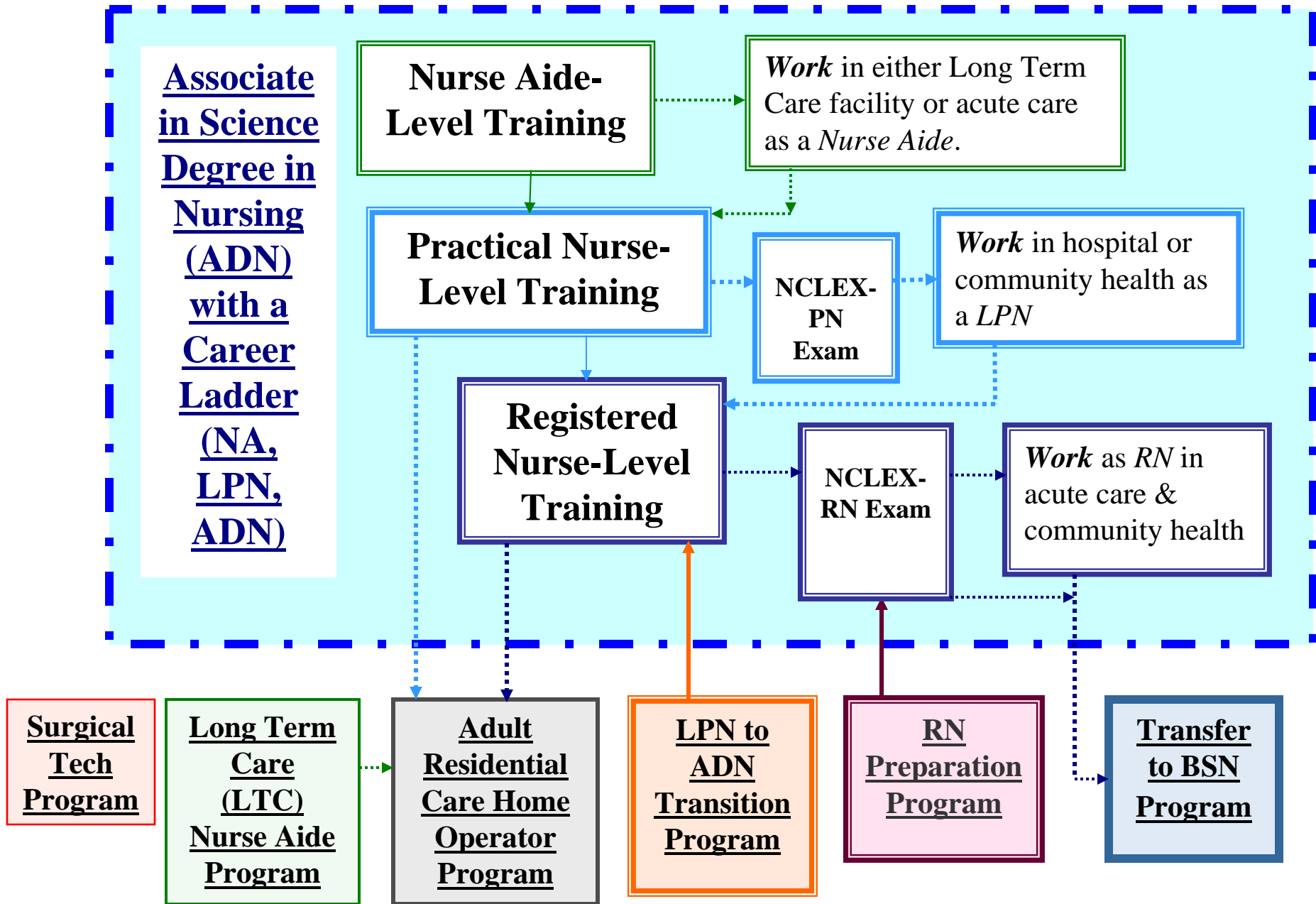


# KapCC's Integrated Purposeful Pathways

- **Develop SLOs at the program and course level**



# KCC Nursing Department Workforce Development Programs

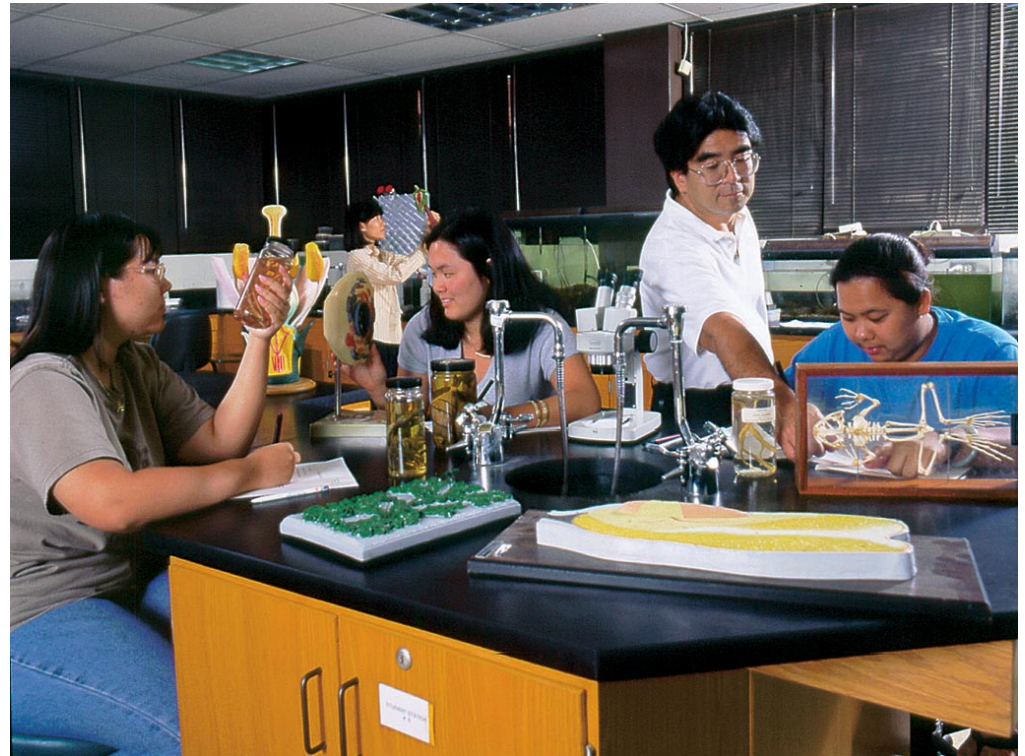


# Kapi'olani CC's Integrated Student Engagement & Success Pathway Model

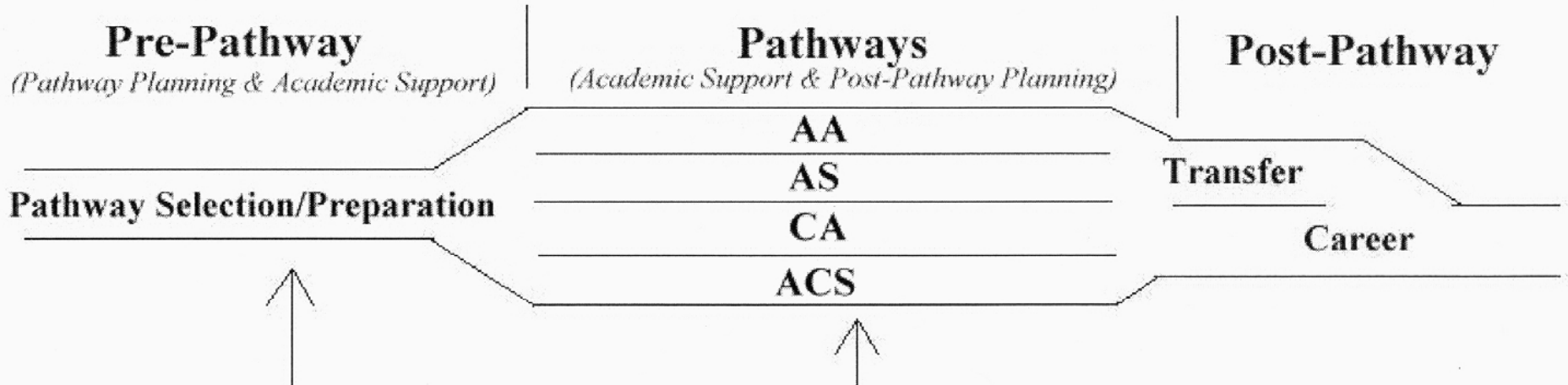


# Kapi'olani CC's Integrated Student Engagement & Success Pathway Model

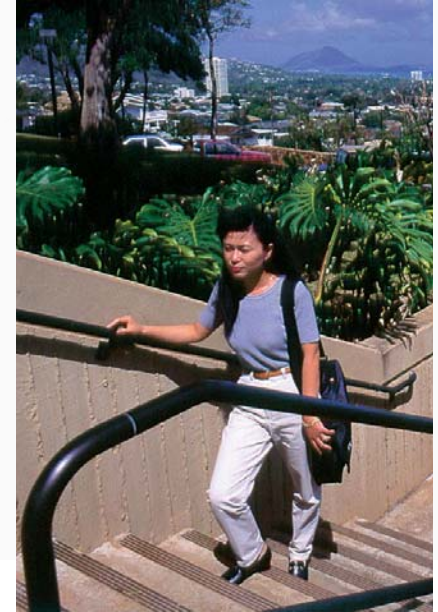
- Plan for **transition** from High School to College
- Plan for academic **access and success**
- Plan for **transfer** or career **employment**, and
- Plan for **maintaining and upgrading skills** through continued career development & community involvement



# Student Engagement & Success Model (Pathways, 7/07)



<ul style="list-style-type: none"> <li>FYE</li> <li>Malama</li> <li>Holomua</li> <li>STEM</li> <li>KCC High School/College Connection Program</li> <li>Gear-Up</li> <li>Running Start</li> <li>Career In-Service</li> <li>American Diploma Project</li> <li>Achieving the Dream</li> <li>Math Success Project (NASH)</li> </ul>	<ul style="list-style-type: none"> <li>e-Portfolios</li> <li>Ka'ie'ie</li> <li>Learning Support</li> <li>Academic Support</li> <li>Co-curricular</li> <li>AACC</li> </ul>
<p>Pathways Support: KISC, CELTT</p>	



- Long Range Development Plan



# Long Range Development Plan

- Starts with:

who we are,



what we are about,



our mission,

our goals,



our stakeholders  
and



our objectives,



our physical campus.



# Long Range Development Plan

- Looks to the future to determine what *physical development* the College needs to continue in order to meet and enhance its mission in the future.



# Long Range Development Plan

- A LRDP is a ***comprehensive plan*** that guides the physical development such as the location of buildings, open space, circulation, and other land uses.



# Long Range Development Plan

- Identifies physical development needed to achieve academic goals, and
- Explores & explains, given the present efforts, the additional future space needs of the College.



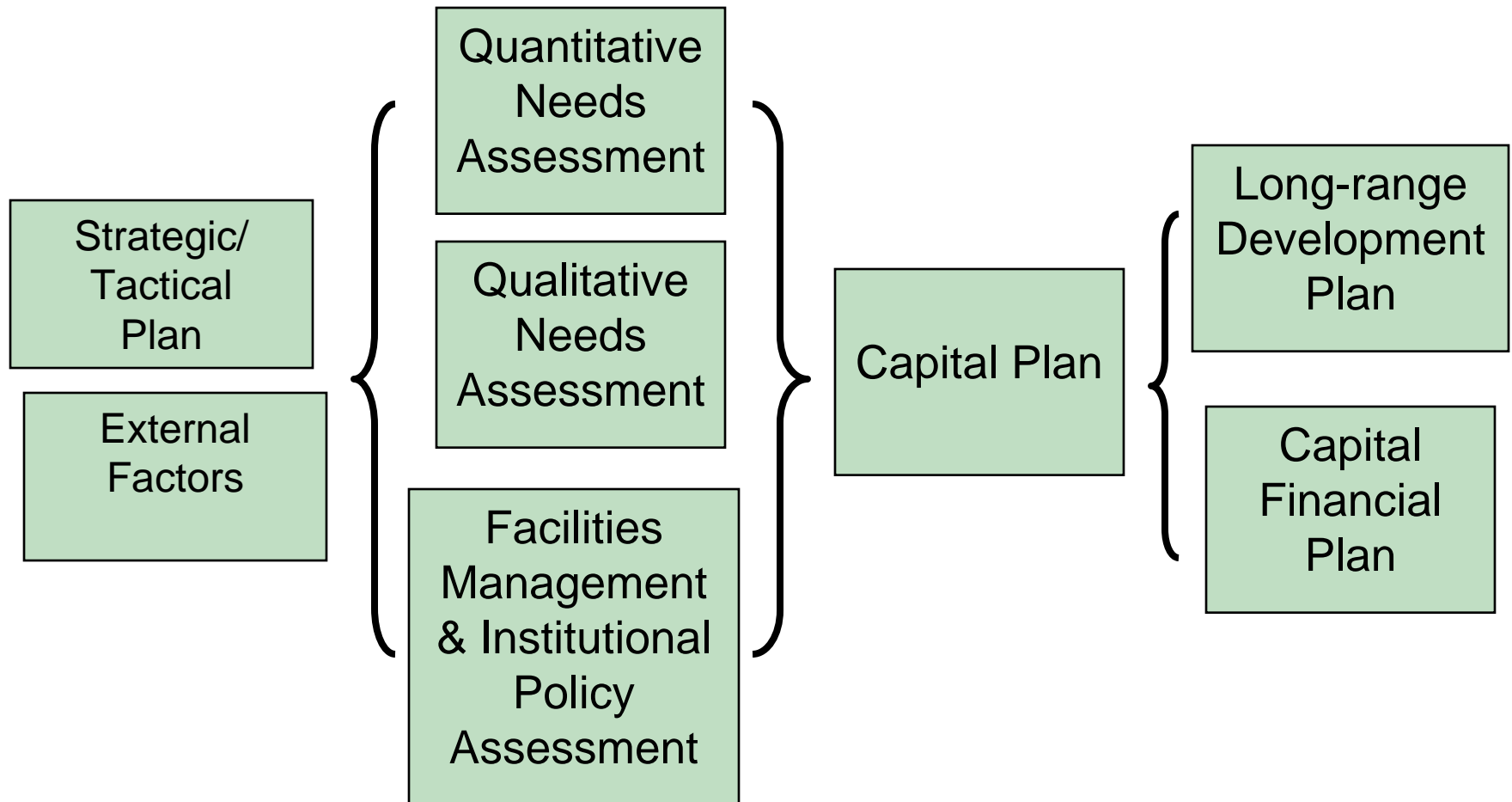
# Long Range Development Planning *Process*

Phase I  
**Inputs**

Phase 2  
**Process Tools**

Phase 3  
**Plan**

Phase 4  
**Outputs**



# Long Range Development Plan

## Pre-LRDP Preparation

- The Space Committee report completed in the Fall semester began with a quantitative review of how we use our space and contains **recommendations** on how we can make the maximum use of existing space;



# Long Range Development Plan

## Pre-LRDP Preparation

- A Chancellor's *preliminary* **LRDP Task Force** has been established to research and develop an action plan on how best to organize our campus and community efforts, to include:
  - what needs to be done;
  - how best to proceed;
  - identification of the stakeholders to be included in the process;
  - a timeline for preparation and completion of the LRDP process;
  - a list of any other preliminary actions necessary to ensure the initiation and completion of a long range development plan for the College.



# Summary

- Outcomes for AY 2007-2008

- Approval of *Re-organization Proposal*
- Recruitment and filling of *Vice Chancellor for Academic Affairs & 3 Program Deans*
- Establishment of a consolidated *Office for Institutional Effectiveness*
- Completion of the *Long Range Development Plan*
- Completion of *Academic Clusters* to include the implementation of the UHM/KCC Degree Pathway Program (Ka'ie'ie) in at least 5 academic program areas
- Increase access and success for Native Hawaiian and other underrepresented student populations through the *Student Engagement and Success Pathway Model*
- Implementation of the consolidation of the *Office of Community and Continuing Education*





*Kapi'olani Community College*

General Faculty & Staff  
Meeting

**Fall 2007**

**August 16, 2007**

**Leon Richards,  
Chancellor**