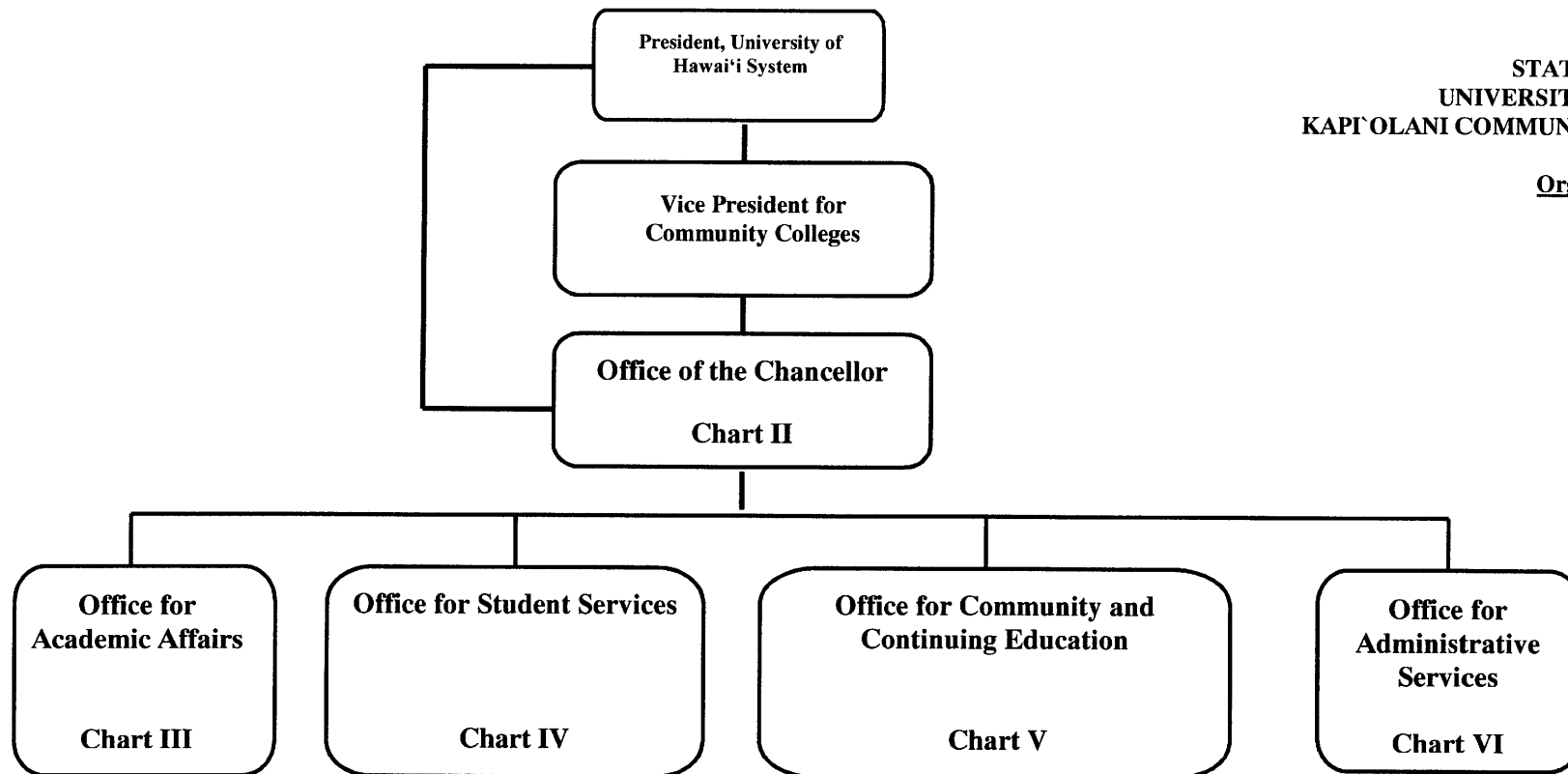


STATE OF HAWAII
 UNIVERSITY OF HAWAII
 KAPĪOLANI COMMUNITY COLLEGE

Organization Chart

Chart I

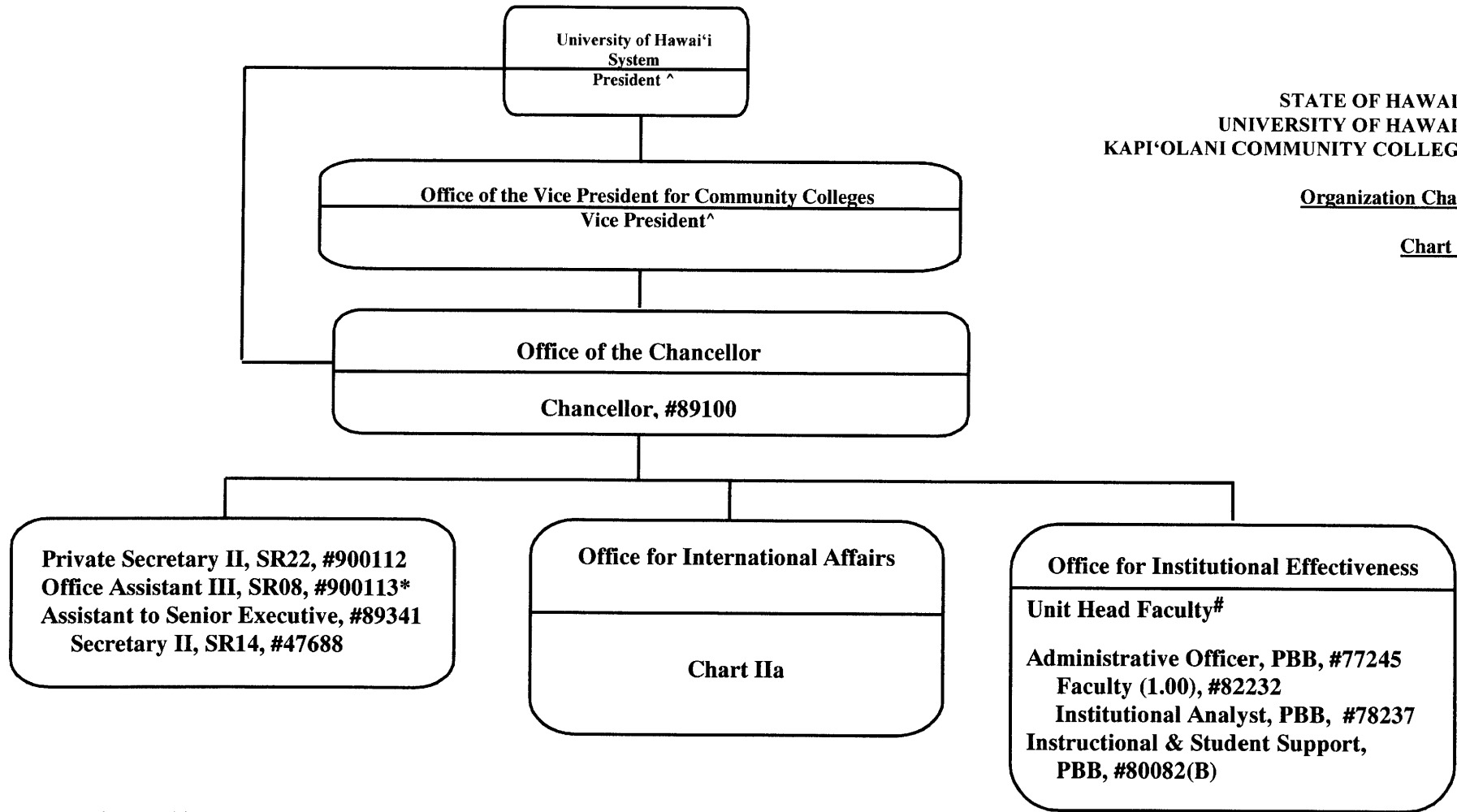


	<u>Perm</u>	<u>Temp</u>
General Fund	389.50	27.50
(B) Special Funds	24.00	

STATE OF HAWAII
 UNIVERSITY OF HAWAII
 KAPI'OLANI COMMUNITY COLLEGE

Organization Chart

Chart II

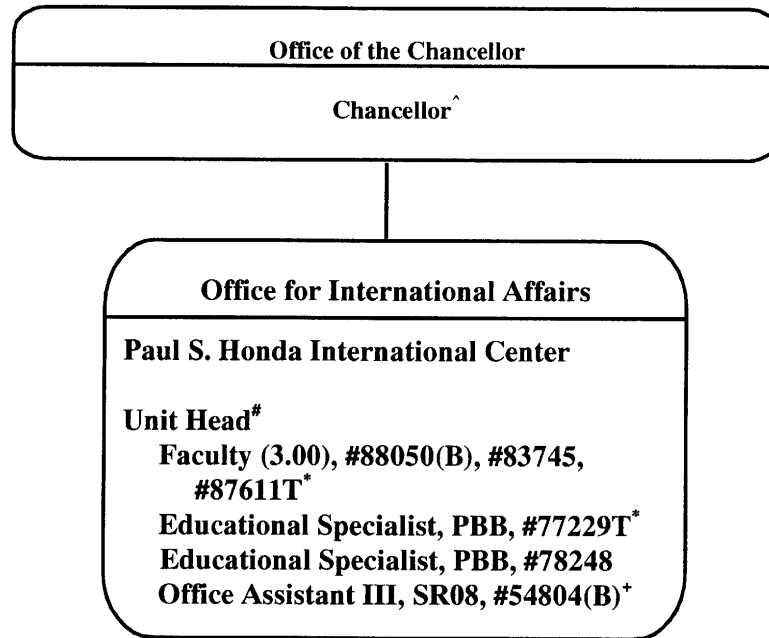


^ Excluded from position count this chart

*Temporary Position

#Unit Head is appointed from among the College faculty.

	<u>Perm</u>	<u>Temp</u>
General Fund	7.00	1.00
(B) Special Funds	1.00	



STATE OF HAWAI'I
UNIVERSITY OF HAWAI'I
KAPI'OLANI COMMUNITY COLLEGE

Organization Chart

Chart IIa

^ Excluded from position count this chart

Unit Head is appointed from among the College faculty

* Temporary position

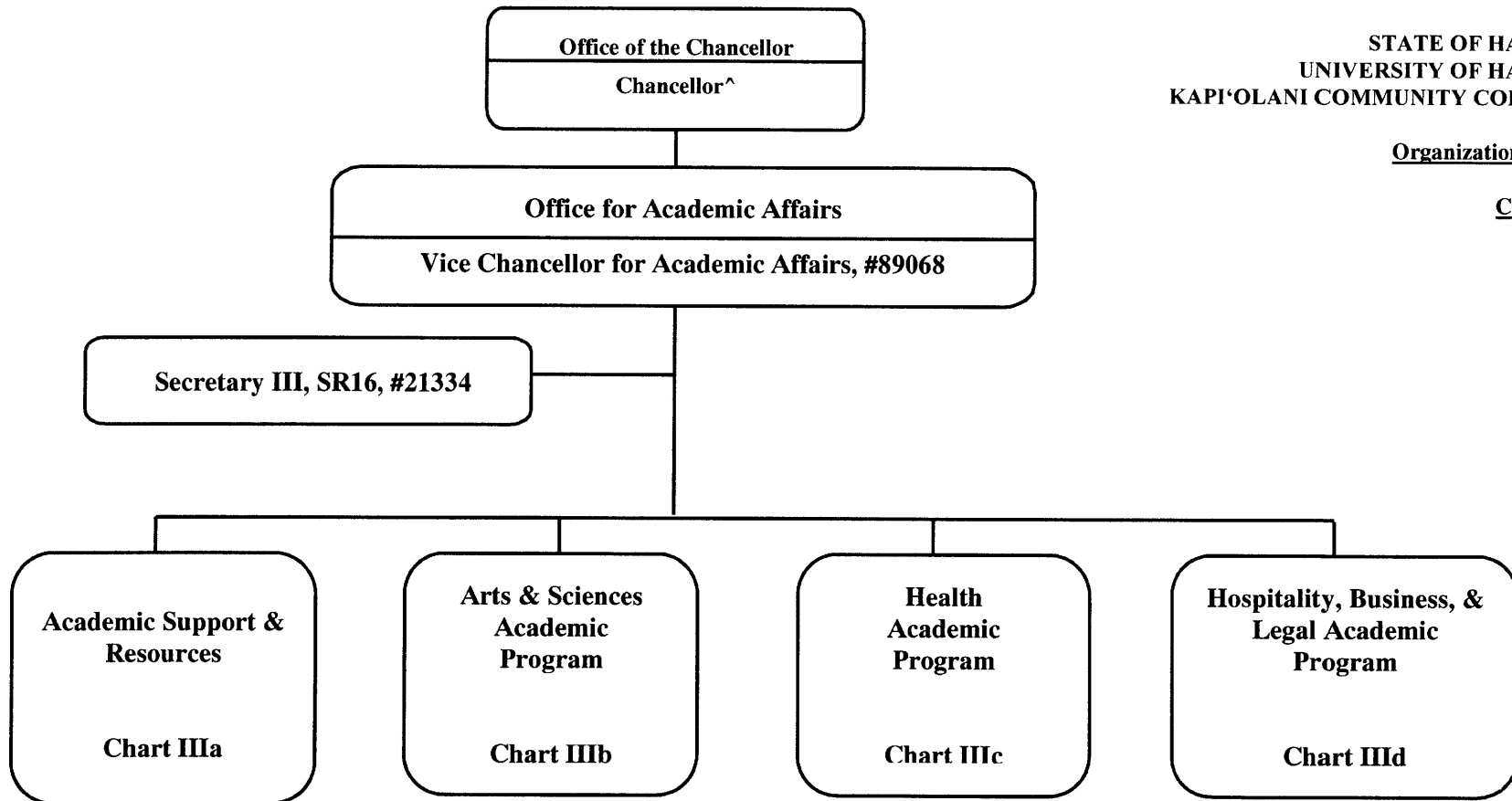
+ To be redescribed & submitted for classification review

	<u>Perm</u>	<u>Temp</u>
General Fund	2.00	2.00
(B) Special Funds	2.00	

STATE OF HAWAI'I
UNIVERSITY OF HAWAI'I
KAPI'OLANI COMMUNITY COLLEGE

Organization Chart

Chart III



^Excluded from position count this chart

General Fund Perm
2.00 Temp

Office for Academic Affairs
 Vice Chancellor for Academic Affairs

STATE OF HAWAII
 UNIVERSITY OF HAWAII
 KAPI'OLANI COMMUNITY COLLEGE

Academic Support & Resources

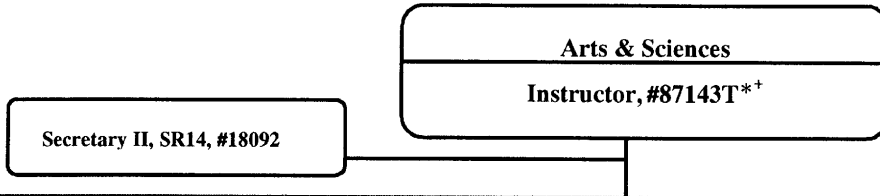
Organization Chart

Chart IIIa

<p>Galludet University Regional Center for the Pacific Region Educational Specialist, PBA, #81761</p> <p>Curriculum Resources and Emphases Educational Specialist, PBB, #81581</p> <p>Library & Learning Resources Head Librarian[#] Secretary I, SR12, #44249 Faculty (7.00) #74847, #83504, #84185, #84438, #86629, #86724, #88040 Library Technician V, SR 11, #39859⁺ Library Assistant IV, SR09, #26762⁺ Educational Specialist, PBA, #78238[@] Library Assistant IV, SR09, #42087, #43605 Educational Specialist, PBA, #77874[@] Educational Specialist, PBA, #77500 Educational & Academic Support Specialist, PBA, #81557, #80914T* Electronic Technician, PBA, #81260</p> <p>Center for Excellence in Learning, Teaching and Technology [CELTT] Unit Head[#] Faculty (2.00) #82386, #87603 Information Technology Specialist, PBB, #80748 Information Technology Specialist, PBC, #81384 Information Technology Specialist, PBB, #79922, #80529, #80340, #81627 Information Technology Specialist, PBA, #81220T* Electronic Technician, PBB, #81277 Electronic Technician, PBB, #80034 Media Specialist, PBB, #80694 Information Technology Specialist, PBB, #81535, #81654 Graphic Artist, PBB, #81060 Secretary II, SR14, #21321 Office Assistant III, SR08, #48451[@]</p>
--

^ Excluded from position count this chart
 * Temporary position
 # Head Librarian/Unit Head is appointed from among the faculty positions
 + To be redescribed & submitted for classification review
 @ Position supervised by one of the faculty positions

	Perm	Temp
General Fund	35.00	2.00



STATE OF HAWAII
UNIVERSITY OF HAWAII
KAPI'OLANI COMMUNITY COLLEGE

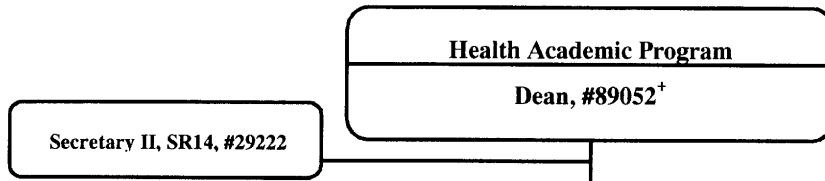
Organization Chart

Chart IIIb

Arts & Sciences Academic Program	
Arts & Humanities	
Chairperson [%]	
Faculty (27.00)	
Full-time:	#82052, #82607, #82631, #82803, #82840, #82876, #82925, #82937, #82983, #83094, #83967, #84470, #84882, #84971, #84974, #86602, #86640, #86695, #86937, #87184, #87402, #87404, #86696T*, 87072T*, #87074T*, #98672F, #98673F
Secretary II, SR14, #22313	
Information Technology Specialist, PBA, #81068T*	
Languages, Linguistics and Literature	
Chairperson [%]	
Faculty (41.50)	
Full-time:	#82135, #82178, #82231, #82380, #82429, #82447, #82555, #82653, #82776, #83123, #83308, #83447, #83521, #83559, #83783, #83795, #83810, #83903, #84327, #84409, #84623, #84754, #86572, #86594, #86595, #86596, #86604, #86798, #86799, #86803, #86809, #86945, #86960, #87120, #87367, #87588, #87143T*, #87583T*, #74813, #74814, #74815
Part-time:	#82540 (0.50 FTE)
Secretary II, SR 14, #26658	
Mathematics/Science	
Chairperson [%]	
Faculty (30.00)	
Full-time:	#82031, #82394, #82492, #82910, #82981, #83096, #83262, #83357, #83688, #83733, #83939, #83974, #84458, #84836, #86585, #86592, #86600, #86606, #86627, #86631, #86718, #86754, #86827, #86830, #86845, #86959, #87401, #86947T*, #96934F, #96935F
Educational Specialist, PBB, #81246	
Secretary II, SR14, #22310	
Social Sciences	
Chairperson [%]	
Faculty (12.00)	
Full-time:	#82152, #82706, #82935, #83492, #83560, #83642, #84972, #84973, #86599, #86649, #86938, #87403
Secretary II, SR 14, #47612	
Arts and Sciences Counseling Unit	
Faculty (5.50)	#82364, #83787, #86704, #86757 (0.50FTE), #99670F, #99671F
Clerk Steno II, SR09, #34661 [@]	

% Chairperson is appointed from among the faculty positions
 * Temporary position
 @ Position supervised by one of the faculty position
 † To be redescribed & submitted for classification review

General Fund	<u>Perm</u> 117.00	<u>Temp</u> 8.00
--------------	-----------------------	---------------------



STATE OF HAWAI'I
UNIVERSITY OF HAWAI'I
KAPI'OLANI COMMUNITY COLLEGE

Organization Chart

Chart IIIc

Health Academic Program	
Emergency Medical Services	
Chairperson%	
Secretary II, SR14, #37300	
Office Assistant III, SR08, #35641	
Faculty (6.00) primarily Oahu based	
Full-time: #86705, #86807, #86808, #87047, #87110, #87440	
Faculty (2.00) primarily Hawaii based	
Full-time: #84739, #84740	
Office Assistant III, SR08, #33867@	
Faculty (1.00) primarily Maui based	
Full-time: #85871	
Office Assistant III, SR08, #33866 (0.50 FTE)	
Health Sciences	
Chairperson%	
Secretary II, SR14, #32952	
Clerk-Steno II, SR09, #40964 (0.50 FTE)	
Faculty (16.00)	
Full-time: #82121, #82162, #82405, #82576, #83310, #83321, #83667, #84223, #84326, #85821, #86384, #86385, #86752, #86882, #86886, #74786	
Nursing	
Chairperson%	
Secretary II, SR14, #18093	
Office Assistant IV, SR10, #42015	
Faculty (39.50)	
Full-time: #82064, #82244, #82513, #84487, #84629, #84655, #86737, #86738, #86740, #86743, #86746, #86747, #86749, #86750, #86751, #86774, #86776, #86777, #86778, #86832, #86833, #86834, #86836, #86837, #86838, #86839, #86840, #98667F, #98668F, #98669F, #98670F, #99663F, #99664F, #99665F, #99666F, #99667F, #99668F	
Part-time: #84308 (.50 FTE), #86736 (.50 FTE), #86739 (.50 FTE), #88072 (.50 FTE), #88074 (.50 FTE)	

% Chairperson is appointed from among the faculty positions

@ Supervised by one of the faculty positions

* To be redescribed & submitted for classification review

General Fund Perm Temp
73.50

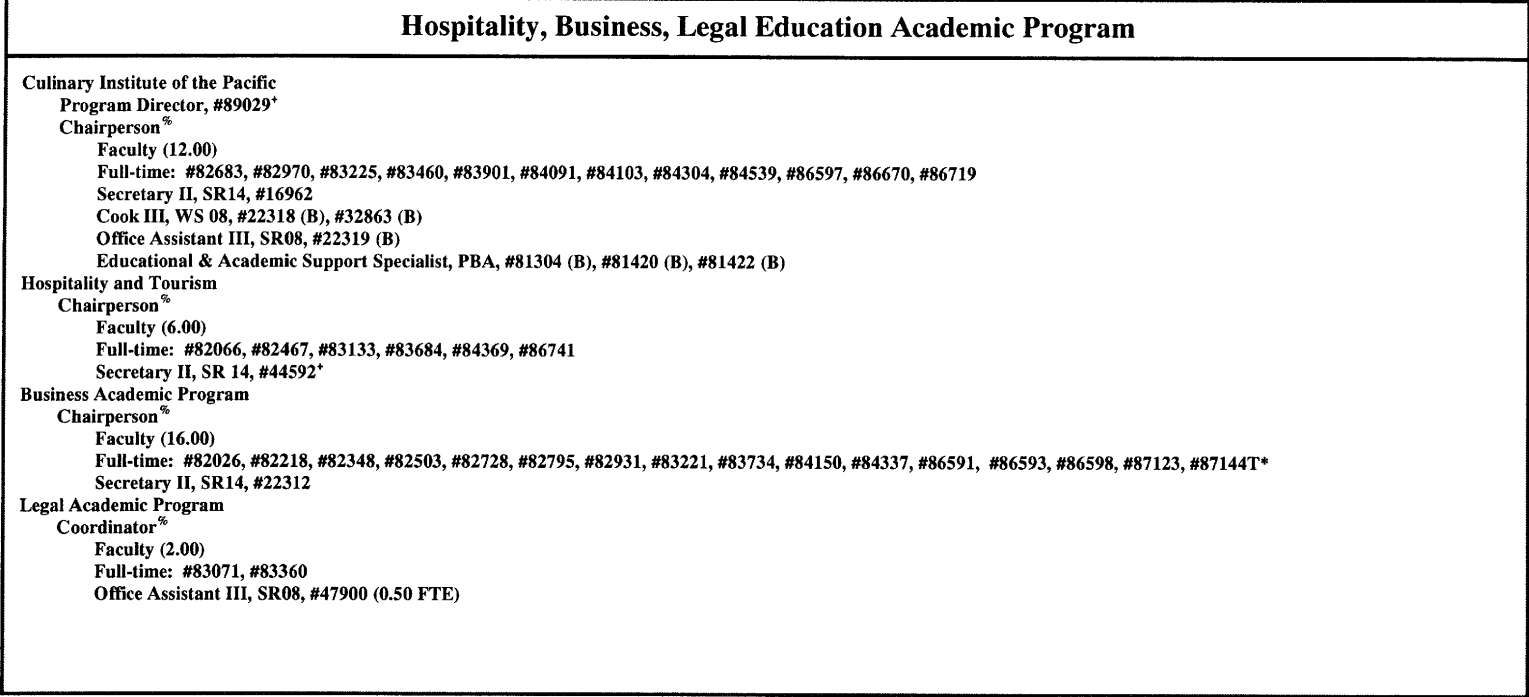
Hospitality, Business, & Legal Education Academic Program
Instructor, #87084T**

Secretary II, SR14, #97150F

STATE OF HAWAI'I
 UNIVERSITY OF HAWAI'I
 KAPI'OLANI COMMUNITY COLLEGE

Organization Chart

Chart III d

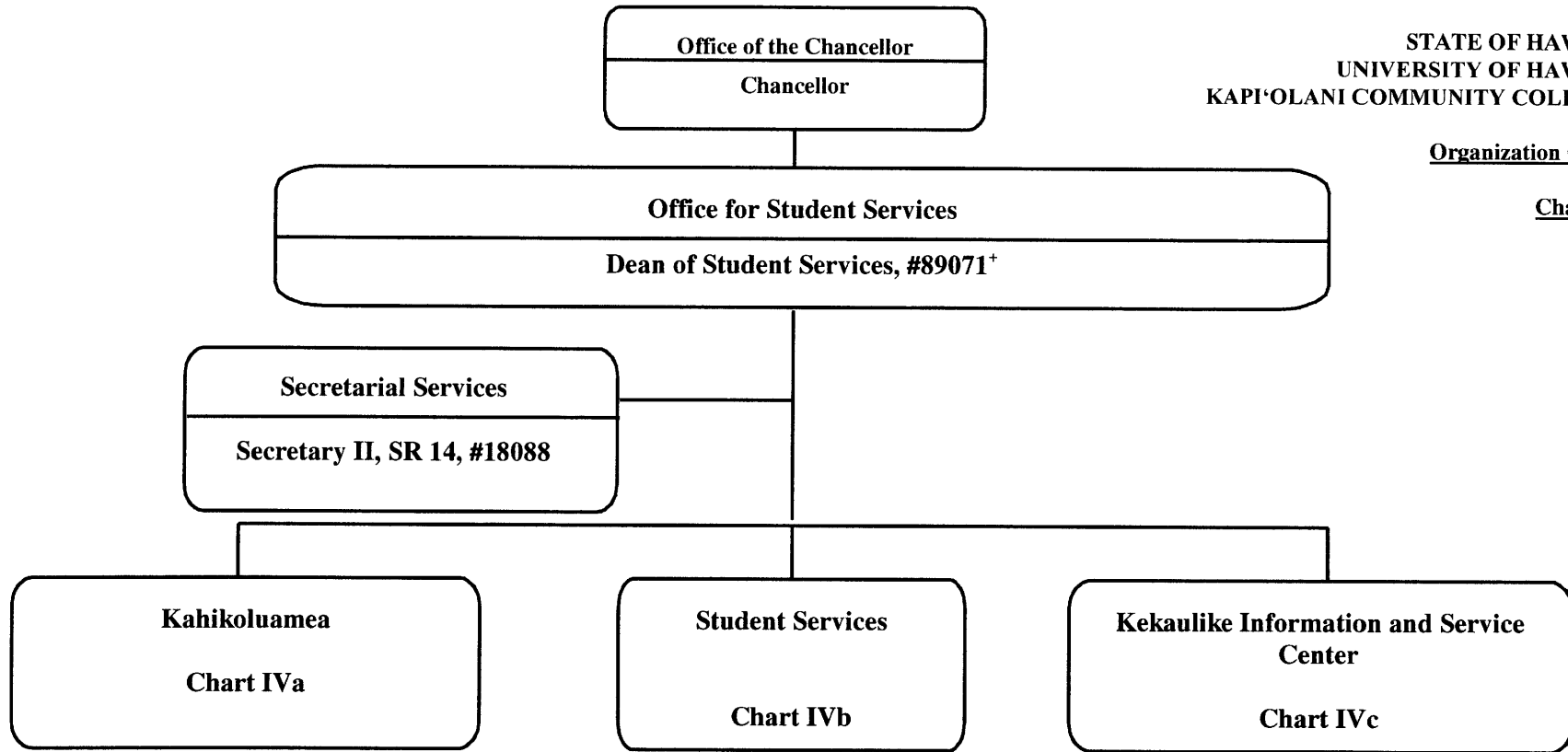


[%] Coordinator is appointed from among the faculty positions
⁺ To be redescribed & submitted for classification
^{*} Temporary position

	<u>Perm</u>	<u>Temp</u>
General Fund	40.50	2.00
(B) Special Funds	6.00	

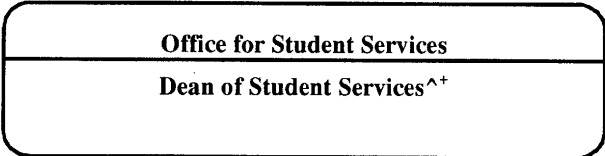
Organization Chart

Chart IV



^ Excluded from position count this chart
 + To be redescribed & submitted for classification

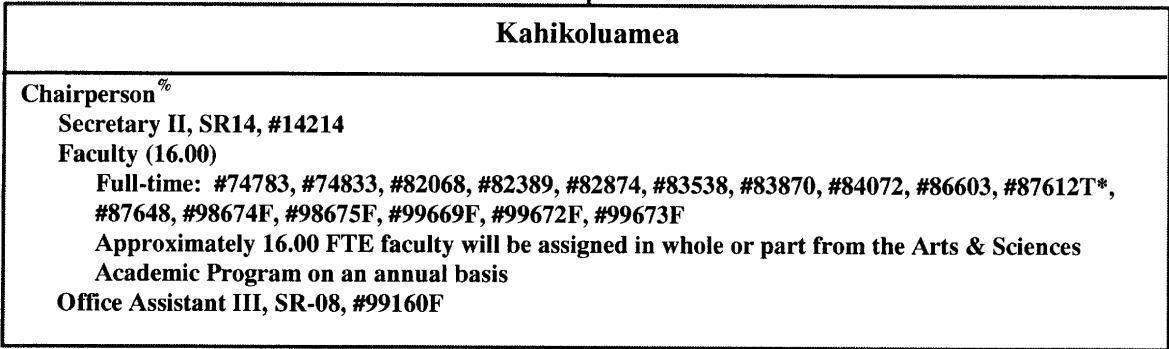
General Fund Perm
 2.00 Temp



STATE OF HAWAI'I
UNIVERSITY OF HAWAI'I
KAPI'OLANI COMMUNITY COLLEGE

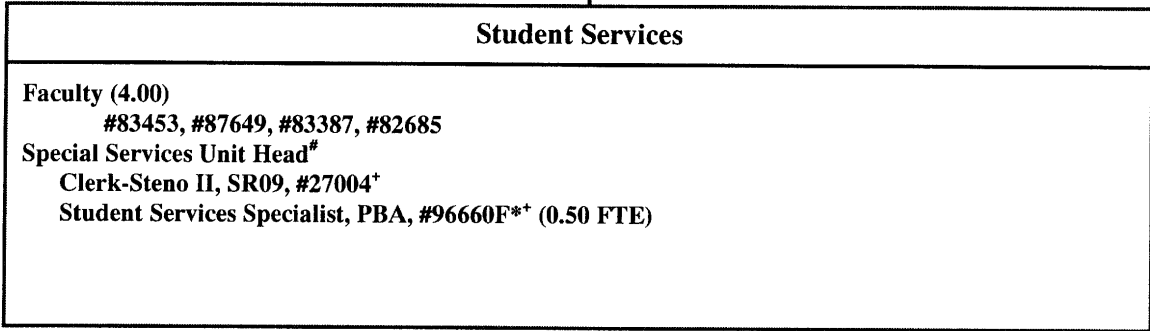
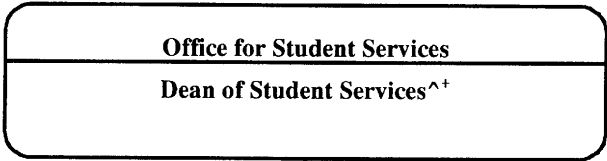
Organization Chart

Chart IVa



[%] Chairperson is appointed from among the faculty positions
[^] Excluded from position count this chart
⁺ To be redescribed

General Fund	<u>Perm</u> 17.00	<u>Temp</u> 1.00
--------------	----------------------	---------------------



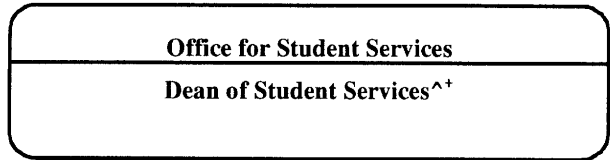
STATE OF HAWAI'I
 UNIVERSITY OF HAWAI'I
 KAPI'OLANI COMMUNITY COLLEGE

Organization Chart

Chart IVb

Unit Head is appointed from among the faculty positions
 + To be redescribed & submitted for classification review
 ^ Excluded from position count this chart

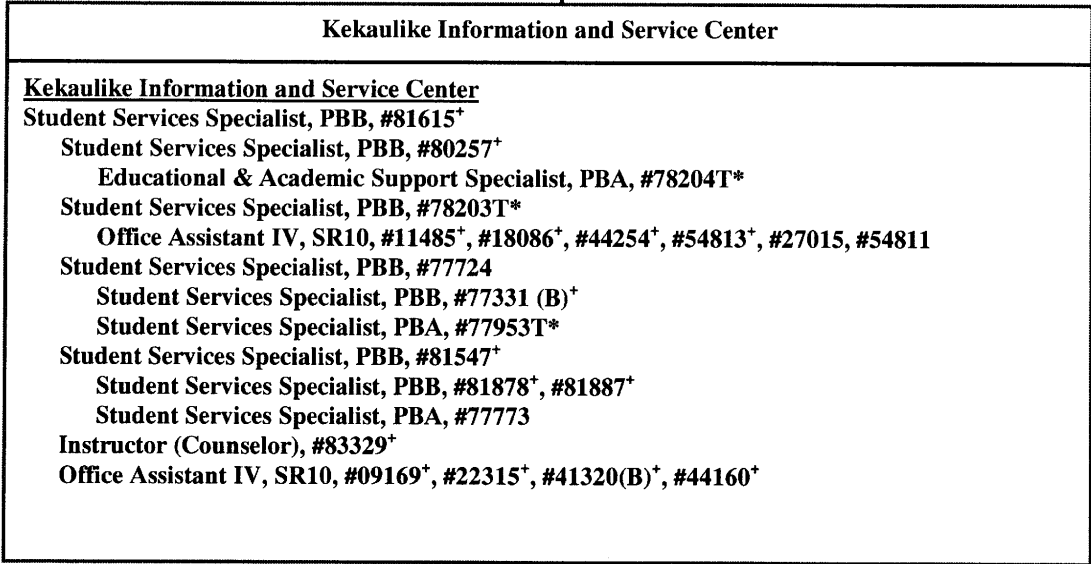
	<u>Perm</u>	<u>Temp</u>
General Fund	5.00	0.50



STATE OF HAWAI'I
 UNIVERSITY OF HAWAI'I
 KAPI'OLANI COMMUNITY COLLEGE

Organization Chart

Chart IVc



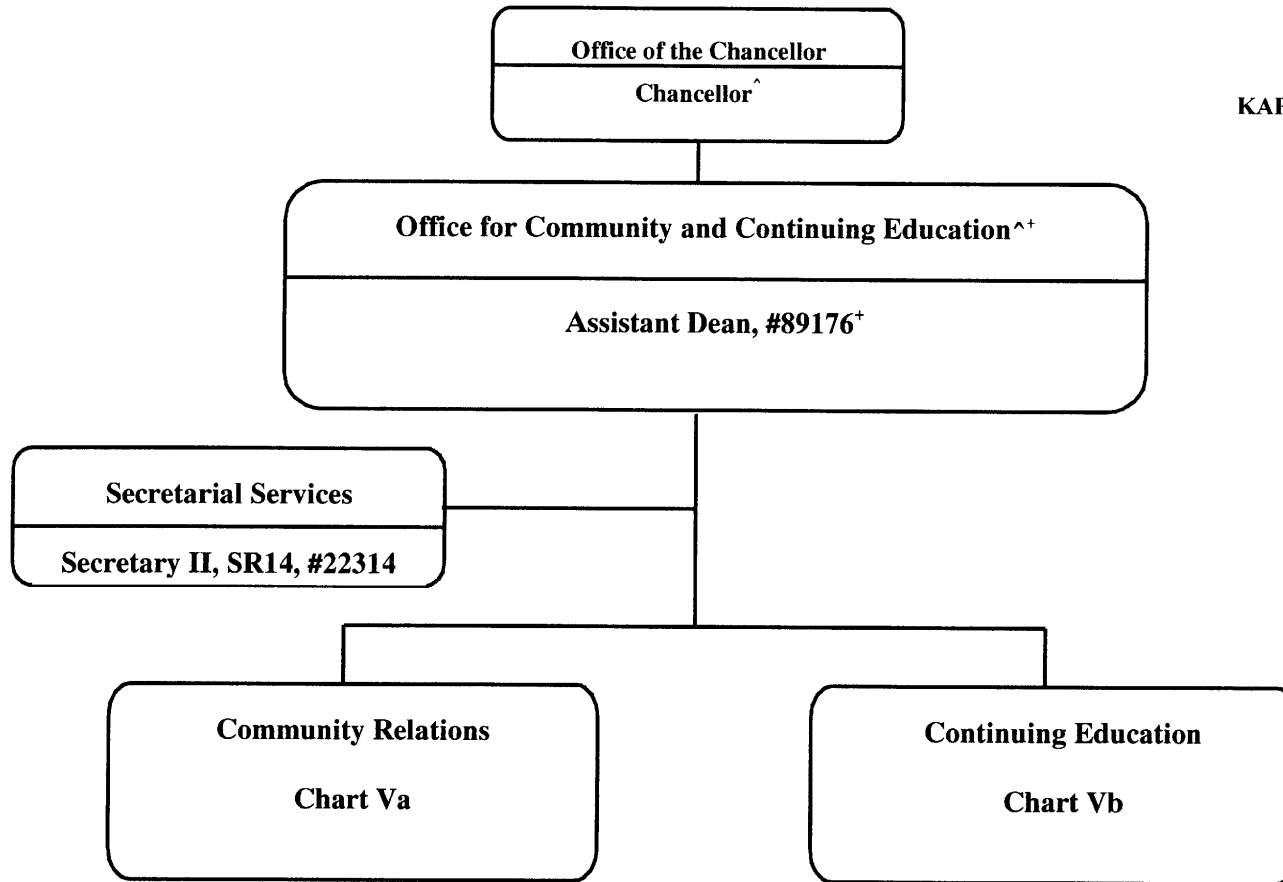
^ Excluded from position count this chart
 + To be redescribed & submitted for classification review
 * Temporary position

	<u>Perm</u>	<u>Temp</u>
General Fund	17.00	3.00
(B) Special Fund	2.00	

STATE OF HAWAII
 UNIVERSITY OF HAWAII
 KAPI'OLANI COMMUNITY COLLEGE

Organization Chart

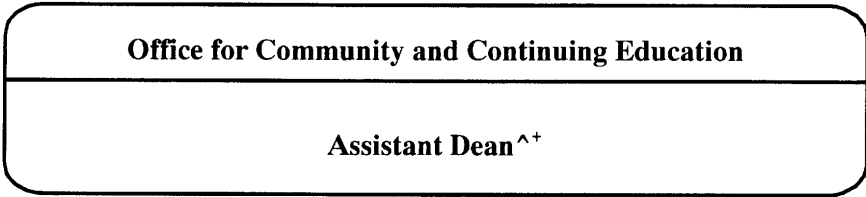
Chart V



* To be redescribed & submitted for classification review

^ Excluded from position count this chart

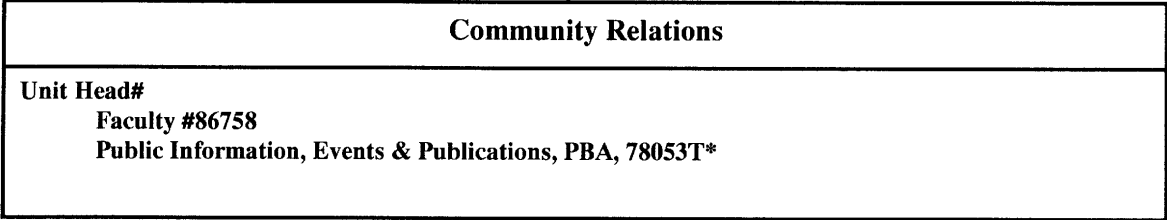
General Fund	<u>Perm</u>	<u>Temp</u>
	2.00	



STATE OF HAWAI'I
 UNIVERSITY OF HAWAI'I
 KAPI'OLANI COMMUNITY COLLEGE

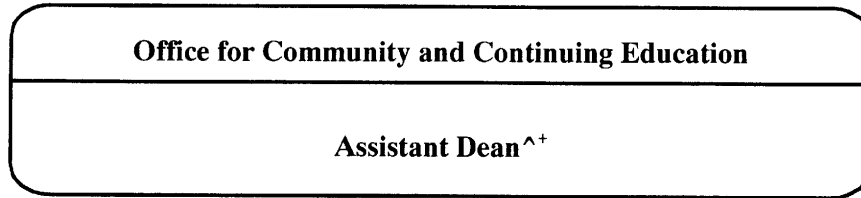
Organization Chart

Chart Va



^ Excluded from position count this chart
 * Temporary position
 # Unit head is appointed from among the faculty positions

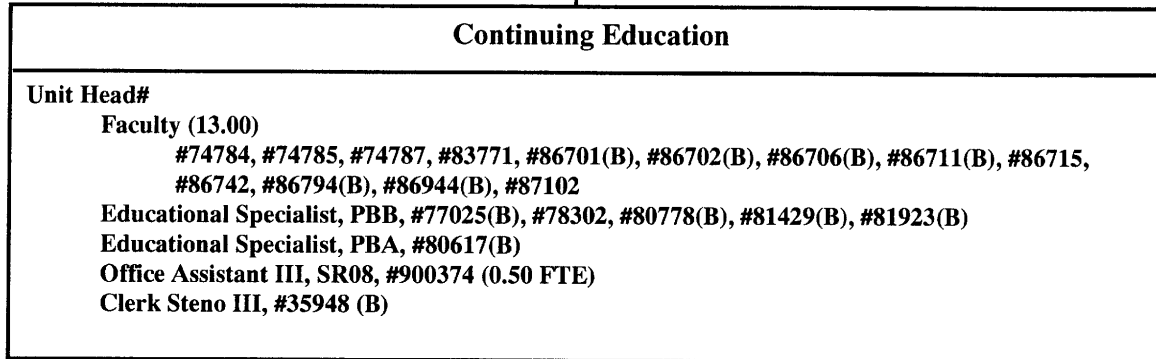
General Fund	<u>Perm</u> 1.00	<u>Temp</u> 1.00
--------------	---------------------	---------------------



STATE OF HAWAII
 UNIVERSITY OF HAWAII
 KAPI'OLANI COMMUNITY COLLEGE

Organization Chart

Chart Vb



^ Excluded from position count this chart

* To be redescribed & submitted for classification review

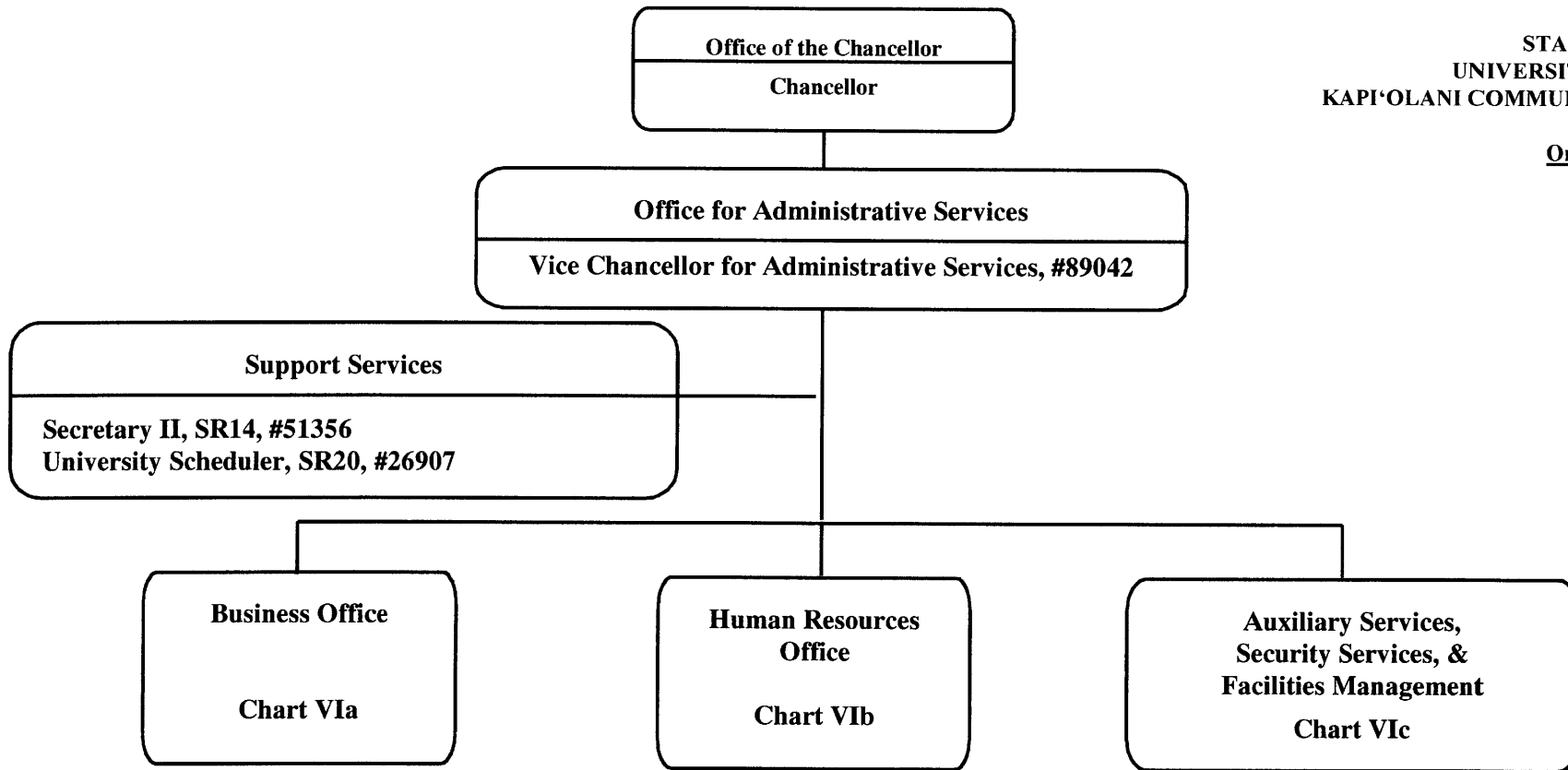
Unit head is appointed from among the faculty positions

	<u>Perm</u>	<u>Temp</u>
General Fund	8.50	
(B) Special Funds	12.00	

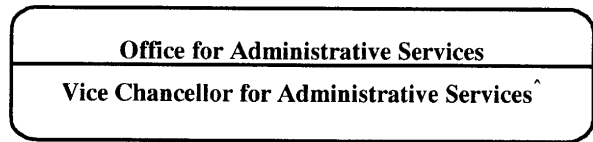
STATE OF HAWAI'I
UNIVERSITY OF HAWAI'I
KAPI'OLANI COMMUNITY COLLEGE

Organization Chart

Chart VI



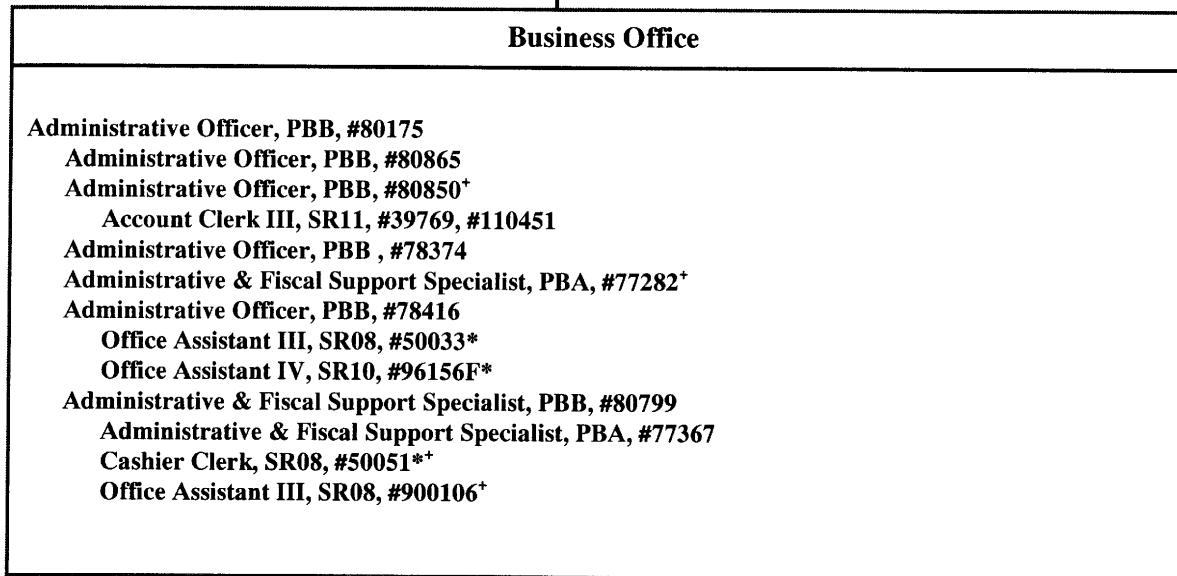
General Fund Perm
3.00 Temp



STATE OF HAWAI'I
UNIVERSITY OF HAWAI'I
KAPI'OLANI COMMUNITY COLLEGE

Organization Chart

Chart VIa

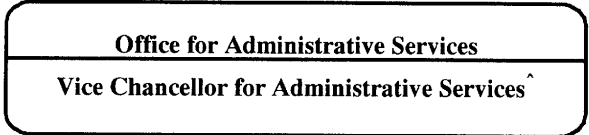


^ Excluded from position count this chart

+ To be redescribed & submitted for classification review

* Temporary position

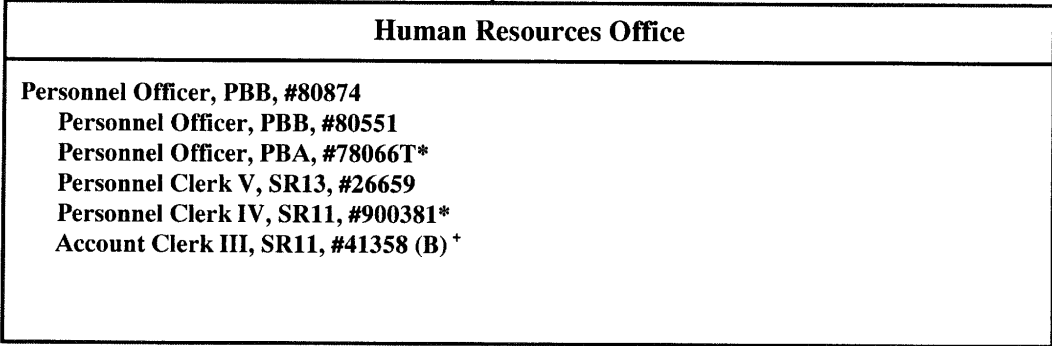
	<u>Perm</u>	<u>Temp</u>
General Fund	11.00	3.00
(B) Special Fund		



STATE OF HAWAII
 UNIVERSITY OF HAWAII
 KAPI'OLANI COMMUNITY COLLEGE

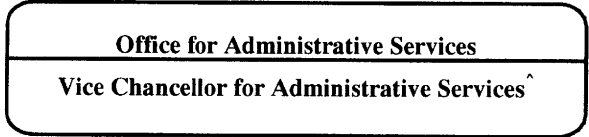
Organization Chart

Chart VIb



^ Excluded from position count this chart
 * Temporary position
 + To be redescribed

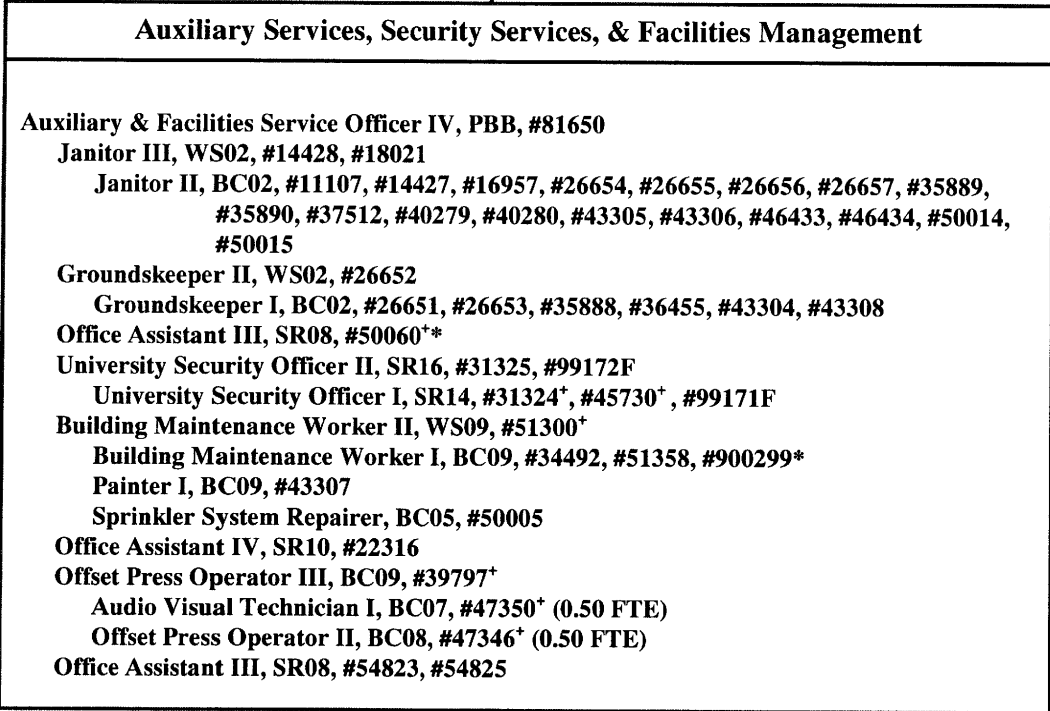
	<u>Perm</u>	<u>Temp</u>
General Fund	3.00	2.00
(B) Special Fund	1.00	



STATE OF HAWAII
UNIVERSITY OF HAWAII
KAPI'OLANI COMMUNITY COLLEGE

Organization Chart

Chart VIc



^ Excluded from position count this chart
 * Temporary position
 + To be redescribed & submitted for classification review

General Fund	<u>Perm</u>	<u>Temp</u>
	43.00	2.00