

Office of the Vice President for Community Colleges

SELF STUDY

DEMOGRAPHIC INFORMATION AND ACHIEVEMENT DATA (DIAD)

FIGURES AND TABLES

UHCC SYSTEM

FALL 2009 Data

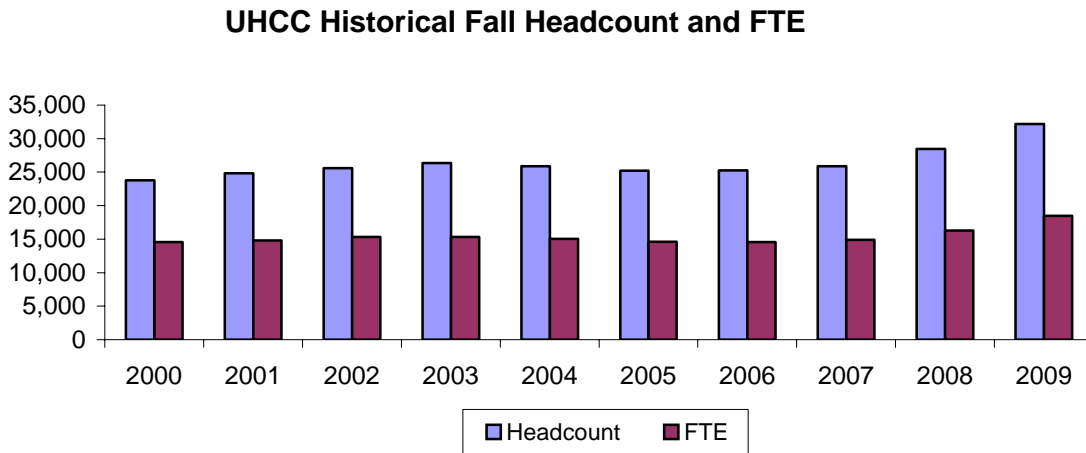
TABLE OF CONTENTS

Figure 1 - Historical Fall Headcount and Full-Time Equivalent (FTE) Enrollment.....	1
Figure 2 - Enrollment Projections	2
Figure 3 - Going Rate High School Graduates (percentage).....	3
Figure 4 - Number High School Graduates Immediate Transition to UH Community Colleges	4
Figure 4.a - Number of High School Graduates Immediate Transition to UH System by Unit.....	4
Table 1 - Enrollment by Residency for Tuition Status, Fall 2005 to Fall 2009	5
Table 2 - International Student Enrollment Fall 2009	6
Figure 5 - University Hawaii Community College System Organizational Chart.....	7
Figure 6 - State of Hawaii, Students, and Faculty Diversity	8
Figure 7 - Hawaiian/Part Hawaiian Students Enrolled University of Hawai'i System	9
Figure 8 - Where Hawaiian/Part Hawaiian Students Enroll (Fall Semester).....	10
Table 3 - Staff by Ethnicity and Gender Fall 2009.....	11
Table 4 - Full Time Faculty by Rank, Ethnicity, and Gender Fall 2009	12
Table 5 - Student Enrollment - Ethnicity and Gender Fall 2009	13
Figure 9 - Retention	14
Figure 10 - Persistence.....	15
Figure 11 - Annual Number Degrees and Certificates Awarded	16
Figure 12 - Continuing Enrollment, Transfer, and Graduation of first-time, full-time, degree-seeking students within 150% of first time enrollment	17
Table 6 - Transfer Numbers and Rates	18
Figure 13 - Developmental Education Completion.....	19
Figure 14 - Employment Status	21
Figure 15 - Graduates and Leavers Job Preparation	22
Figure 16 - CSSE Benchmark Percentiles	23

STUDENT ENROLLMENT

Full Time Equivalent (FTE) is defined as the total student semester hours, summed across all course enrollments in regular credit courses, divided by 15.

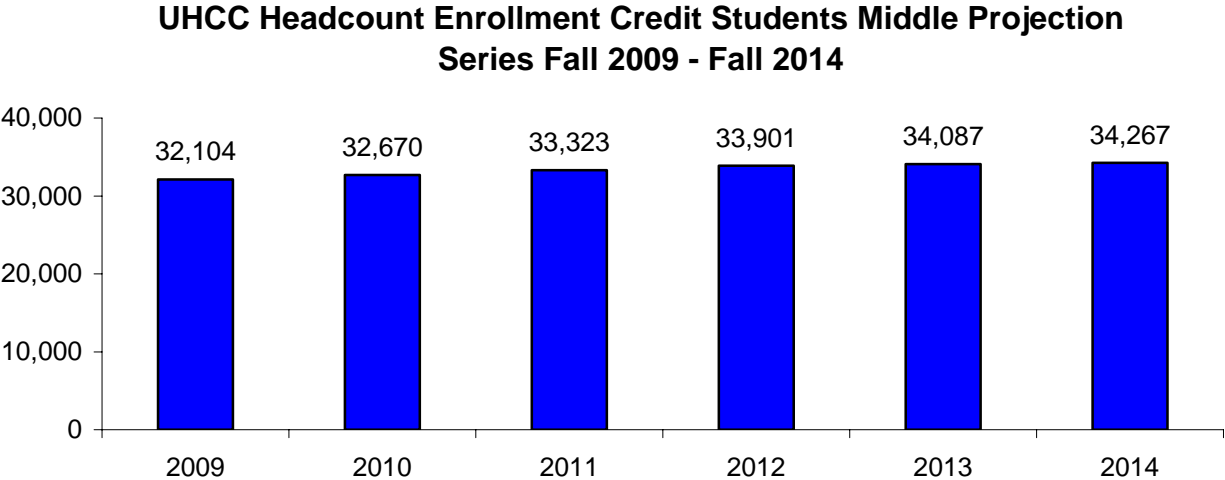
Figure 1 - Historical Fall Headcount and Full-Time Equivalent (FTE) Enrollment



Source: MAPS – Fall Enrollment Report, University of Hawaii, Community Colleges Fall 2009, Table 1, Table 2

ENROLLMENT PROJECTIONS

Figure 2 - Enrollment Projections

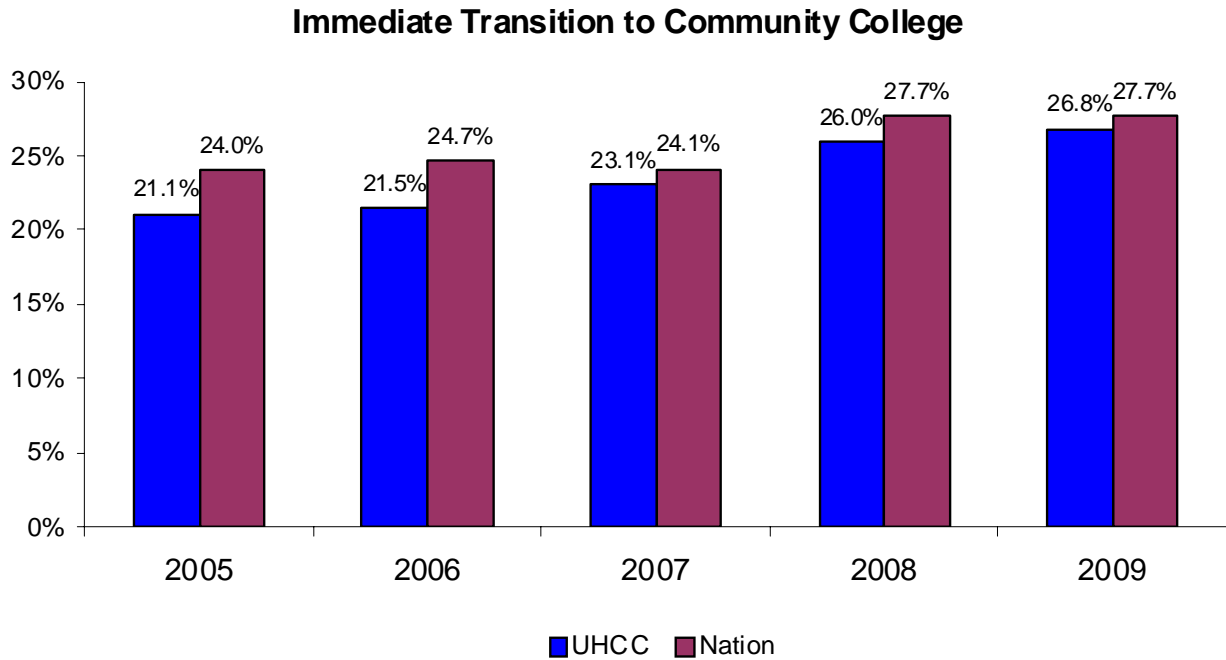


Source: MAPS – Enrollment Projections University of Hawaii Community Colleges Fall 2009 To Fall 2014, Table 1, Middle Projection Series

GOING RATE

Going Rate – Percentage Hawaii public and private June high school graduates who enroll in a community college the following fall semester

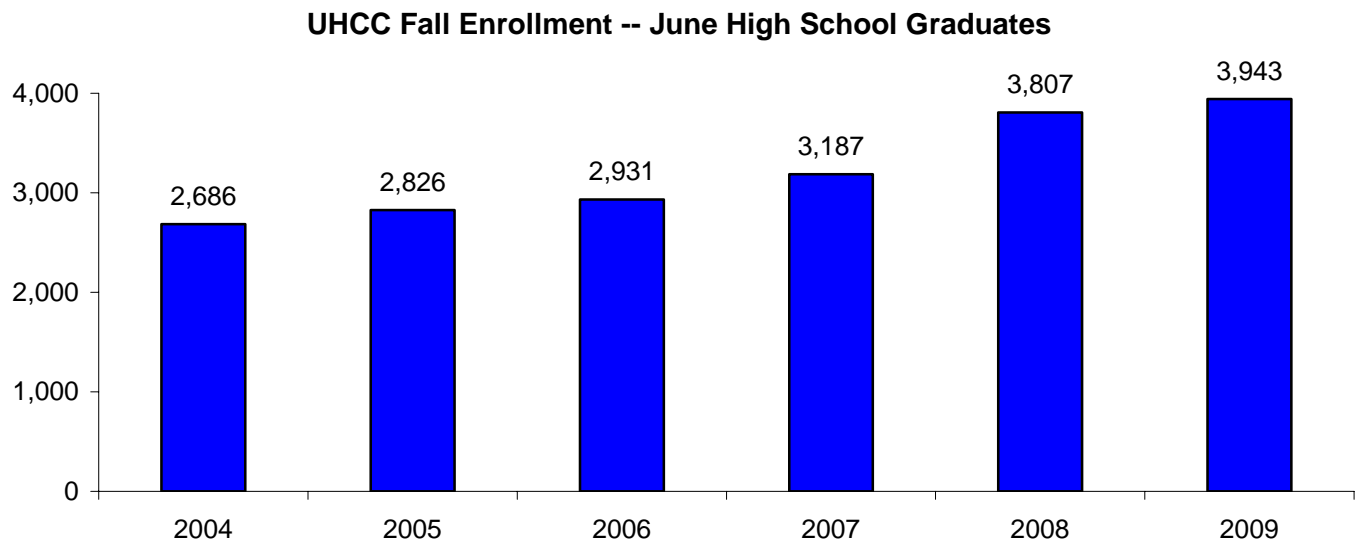
Figure 3 - Going Rate High School Graduates (percentage)



Sources:

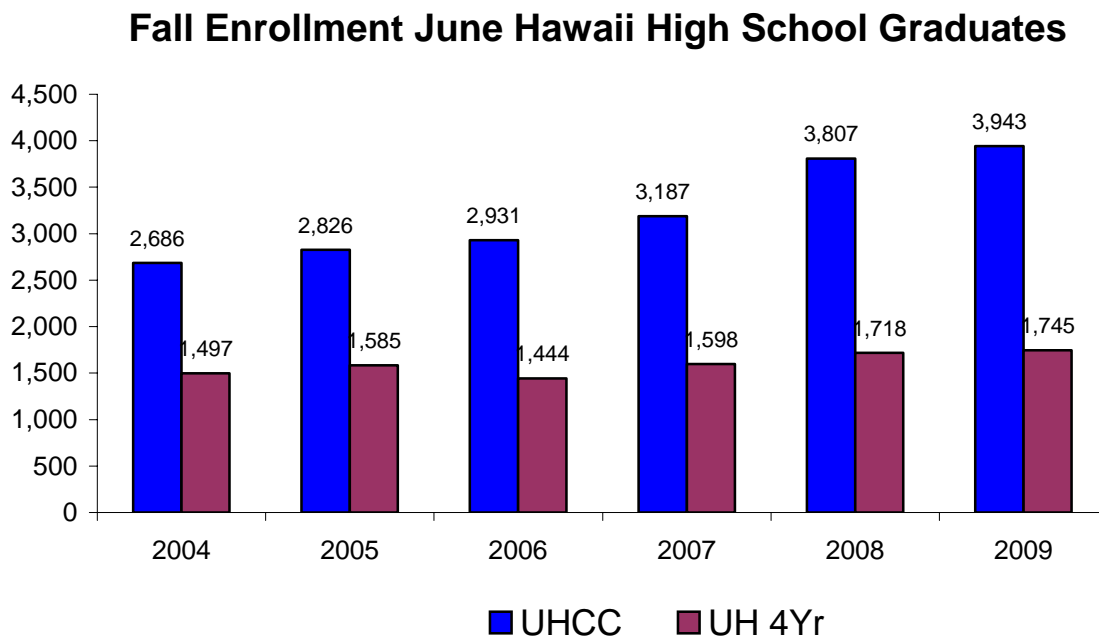
- 1) Hawaii: MAPS – High School Background of First-Time Students, Table 4
Includes public and private graduates
- 2) Nation: National Center for Education Statistics 2008. Digest Education Statistics: Table 395
College Enrollment and Labor Force Status of High School Completers tables.

Figure 4 - Number High School Graduates Immediate Transition to UH Community Colleges



Source: MAPS – High School Background of First-Time Students, Table 4

Figure 4.a - Number of High School Graduates Immediate Transition to UH System by Unit



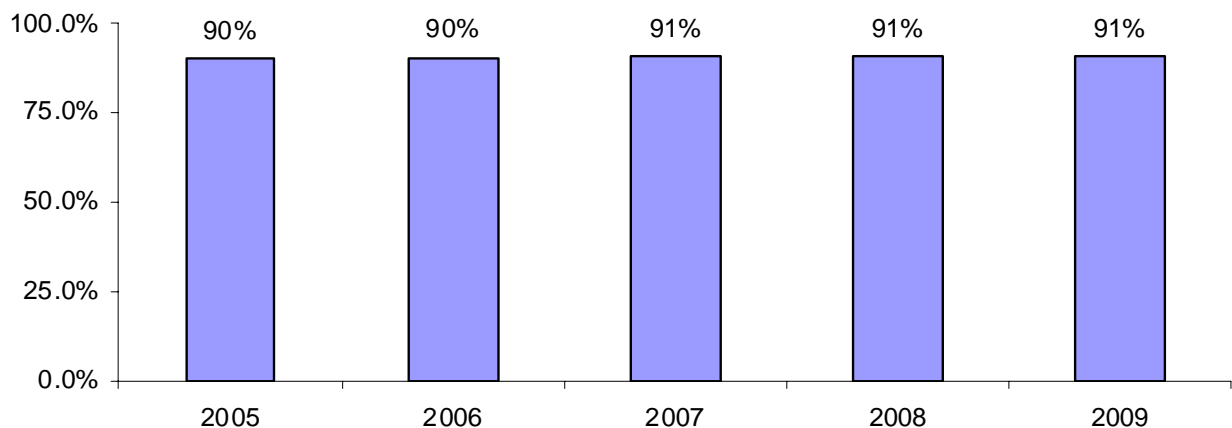
Source: MAPS – High School Background of First-Time Students, Table 4

ENROLLMENT BY RESIDENCY FOR TUITION STATUS

Table 1 - Enrollment by Residency for Tuition Status, Fall 2005 to Fall 2009

	Fall 2005		Fall 2006		Fall 2007		Fall 2008		Fall 2009	
	No.	%	No.	%	No.	%	No.	%	No.	%
Resident	22,466	89.00	22,542	89.20	23,202	89.60	25,524	89.73	28,975	89.98
Resident Converted	269	1.10	282	1.10	246	1.00	264	0.93	262	0.81
Residents Subtotal	22,735	90.10	22,824	90.40	23,448	90.60	25,788	90.66	29,237	90.79
Not Exempted	1,271	5.00	1,297	5.10	1,338	5.20	1,494	5.25	1,618	5.02
West Undergraduate Exchange	19	0.10	37	0.10	44	0.20	45	0.16	58	0.18
Military Exemption	776	3.10	693	2.70	669	2.60	707	2.49	793	2.46
Faculty/Staff Exemption	20	0.10	16	0.10	20	0.10	23	0.08	30	0.09
Institutional Exemption	226	0.90	220	0.90	119	0.50	61	0.21	24	0.07
Student Exchange	1	0.00	0	0.00	1	0.00	4	0.01	0	0.00
Pacific-Asian Exemption	11	0.00	16	0.10	14	0.10	9	0.03	1	0.00
East-West Center	0	0.00	2	0.00	1	0.00	1	0.00	0	0.00
Hawaiian Exemption	171	0.70	155	0.60	161	0.60	184	0.65	251	0.78
Rev Institutional/Exempt					60	2.50	111	0.39	162	0.50
Hawai'i National Guard & Reserve					12	0.50	17	0.06	29	0.09
Non-Resident Subtotal	2,495	9.90	2,436	9.60	2,439	9.40	2,656	9.34	2,966	9.21
No Data	3	0.00	0	0.00	0	0.00	0	0.00	0	0.00
GRAND TOTAL	25,233	100	25,260	100	25,887	100	28,444	100	32,203	100

Percent Community College Students Paying Resident Tuition



Source: MAPS – Fall Enrollment Report University of Hawaii Community Colleges, Table 3 Selected Characteristics of Credit Students

INTERNATIONAL STUDENT ENROLLMENT

The University's long-standing interest in International Education has attracted a wealth of academic expertise, resources, and linkages. The University of Hawaii Community Colleges are engaged in a variety of international programs and projects, reflecting their commitment to developing institutional expertise in international education, with a particular focus on the Asia and Pacific region.

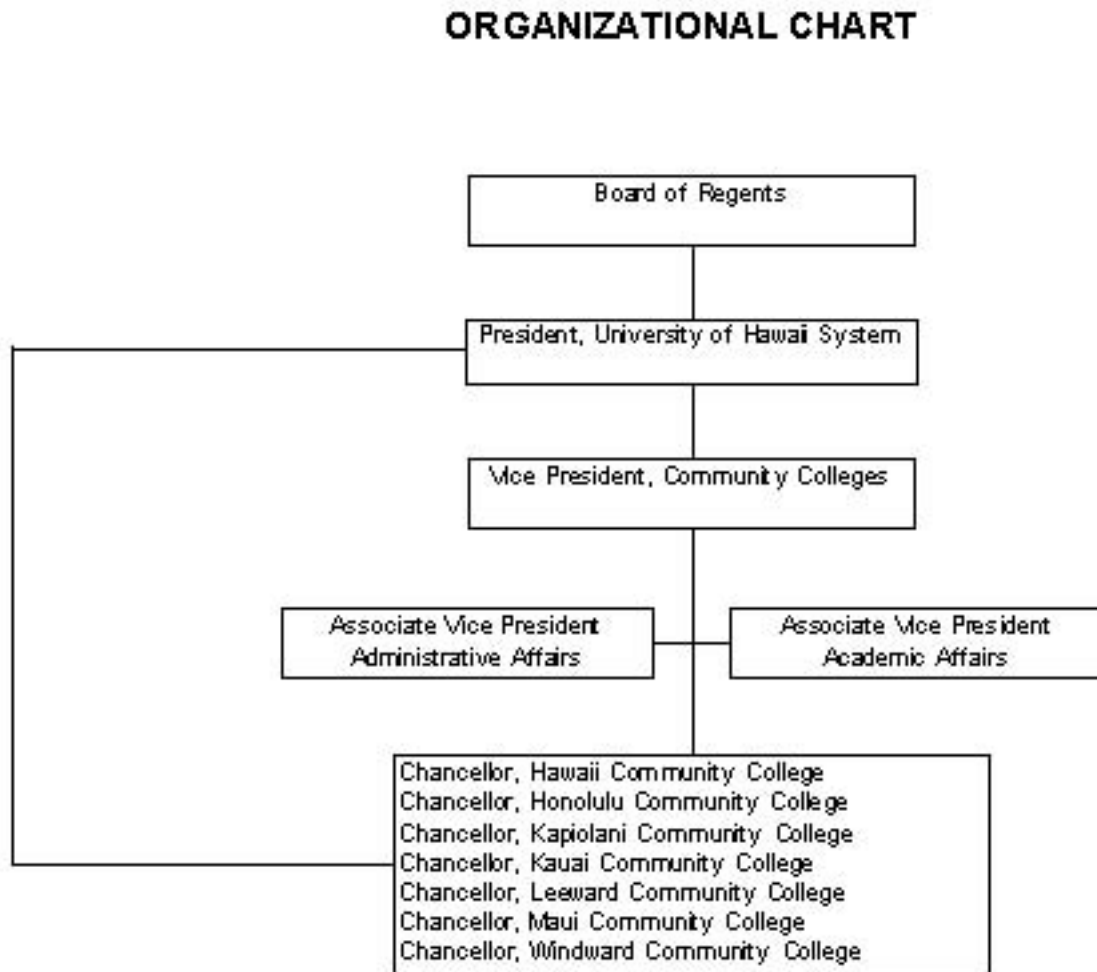
Table 2 - International Student Enrollment Fall 2009

Region of Origin	HAW	HON	KAP	KAU	LEE	MAU	WIN	UHCC
Africa			1					1
Americas	2	3	19	1	7	8	1	41
Asia	39	22	466	3	33	19	1	583
Australia		1				1		2
Europe	2	3	10	1	2	2	1	21
Middle East	1		1			1		3
Oceania		1	7					8
Total	44	30	504	5	42	31	3	659
Region of Origin	HAW	HON	KAP	KAU	LEE	MAU	WIN	UHCC

Source: ODS – IRO_BASE_UH (End of Semester)

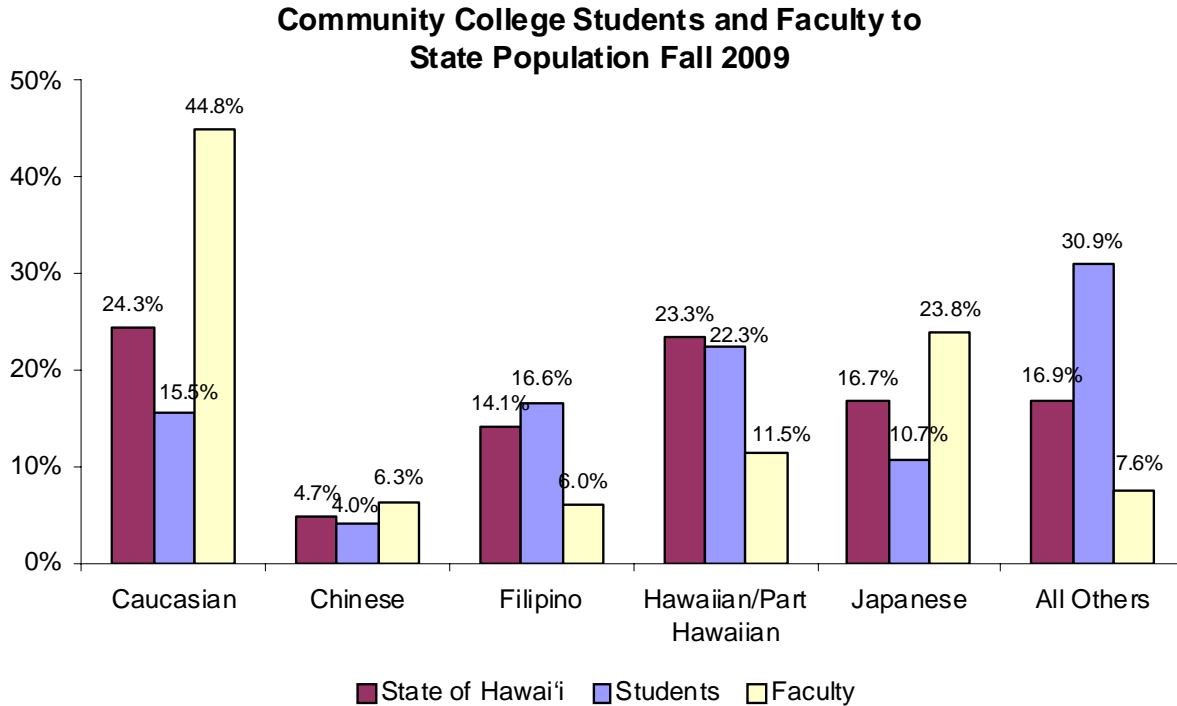
ORGANIZATIONAL CHART

Figure 5 - University Hawaii Community College System Organizational Chart



DIVERSITY

Figure 6 - State of Hawaii, Students, and Faculty Diversity

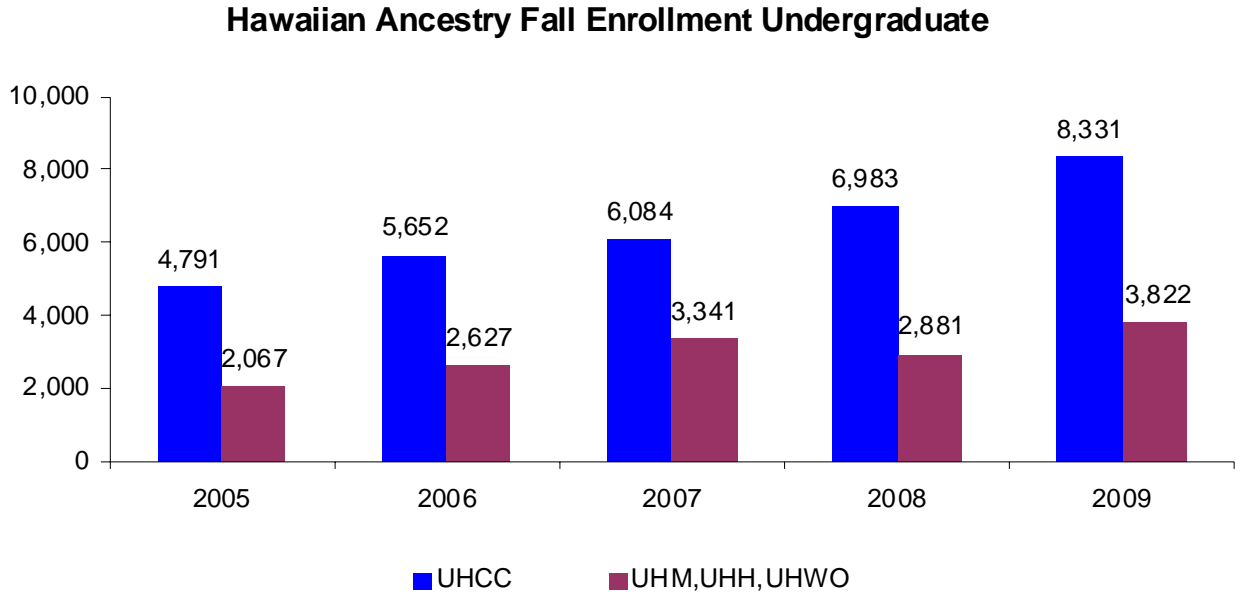


Sources:

- 1) State of Hawaii: Population - Profile of General Demographic Characteristics: 2000, Data Set: Census 2000 Summary File 1 (SF1) 100 Percent Data; Geographic Area: Hawaii (Native Hawaiian Race Alone or in combination with one or more races)
- 2) Students: ODS – IRO_BASE_UH (Census)
UH System MAPS UHCC Fall 2009 Enrollment Report Table 4
- 3) Full Time Faculty: Community Colleges Human Resource Office

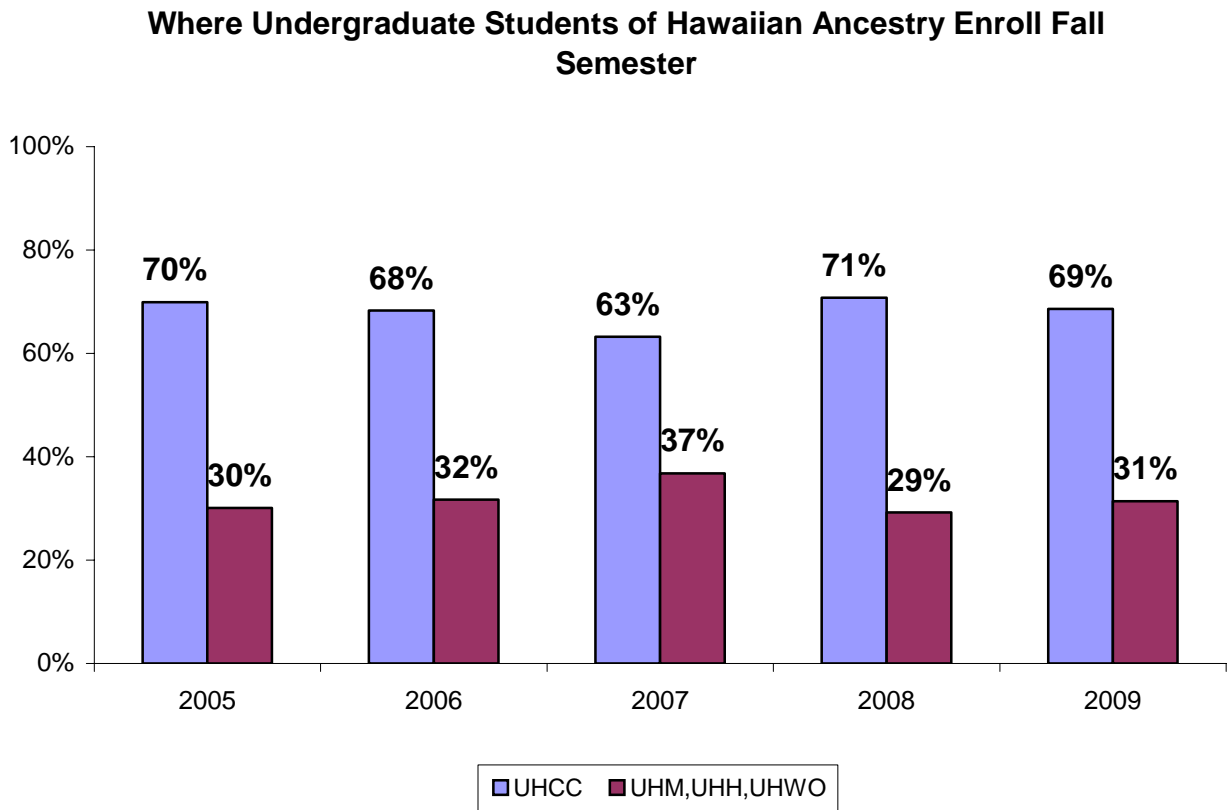
HAWAIIAN AND PART HAWAIIAN ENROLMENT

Figure 7 - Hawaiian/Part Hawaiian Students Enrolled University of Hawai'i System



Source: UH System MAPS UHCC Fall 2009 Enrollment Report Table 4

Figure 8 - Where Hawaiian/Part Hawaiian Students Enroll (Fall Semester)



Source: UH System MAPS UHCC Fall 2009 Enrollment Report Table 4

EMPLOYEE PROFILE

Table 3 - Staff by Ethnicity and Gender Fall 2009

UHCC	Total		Exec/Mgr		Admin, Prof & Tech		Civil Service		Instruct Faculty		Other Faculty	
	Count		Count		Count		Count		Count		Count	
All Employees	1,798		51	2.8	340	18.9	440	24.5	611	34.0	356	19.8
Asian and Pacific Islander	850	47.3	28	1.6	194	10.8	254	14.1	227	12.6	147	8.2
Chinese	109	6.1	1	0.1	21	1.2	26	1.4	43	2.4	18	1.0
Filipino	195	10.8	3	0.2	37	2.1	97	5.4	24	1.3	34	1.9
Indian Subcontinent	10	0.6	0	0.0	1	0.1	0	0.0	9	0.5	0	0.0
Japanese	509	28.3	24	1.3	131	7.3	125	7.0	136	7.6	93	5.2
Korean	25	1.4	0	0.0	3	0.2	5	0.0	15	0.8	2	0.1
Laotian	0	0.0	0	0.0	0	0.0	0	0.0	0	0.0	0	0.0
Thai	0	0.0	0	0.0	0	0.0	0	0.0	0	0.0	0	0.0
Vietnamese	0	0.0	0	0.0	0	0.0	0	0.0	0	0.0	0	0.0
Other Asian	2	0.1	0	0.0	1	0.1	1	0.1	0	0.0	0	0.0
Hawaiian and Pacific Islander	316	17.6	4	0.2	59	3.3	123	6.8	72	4.0	58	3.2
Guam Chamorro	0	0.0	0	0.0	0	0.0	0	0.0	0	0.0	0	0.0
Hawaiian/Part Hawaiian	263	14.6	4	0.2	54	3.0	95	5.3	61	3.4	49	2.7
Micronesian	0	0.0	0	0.0	0	0.0	0	0.0	0	0.0	0	0.0
Samoan	7	0.4	0	0.0	0	0.0	4	0.2	0	0.0	3	0.2
Tongan	0	0.0	0	0.0	0	0.0	0	0.0	0	0.0	0	0.0
Other Pacific Islander	46	2.6	0	0.0	5	0.3	24	1.3	11	0.6	6	0.3
Mixed Pacific Islander	0	0.0	0	0.0	0	0.0	0	0.0	0	0.0	0	0.0
Mixed Asian Pacific Islander	0	0.0	0	0.0	0	0.0	0	0.0	0	0.0	0	0.0
Other Ethnic Groups	617	34.3	19	1.1	86	4.8	50	2.8	312	17.4	150	8.3
African American	11	0.6	1	0.1	1	0.1	1	0.1	4	0.2	4	0.2
American Indian/Alaska Native	12	0.7	0	0.0	2	0.1	2	0.1	6	0.3	2	0.1
Caucasian	567	31.5	18	1.0	76	4.2	37	2.1	294	16.4	142	7.9
Hispanic	27	1.5	0	0.0	7	0.4	10	0.6	8	0.4	2	0.1
Mixed	0	0.0	0	0.0	0	0.0	0	0.0	0	0.0	0	0.0
No Response	15	0.8	0	0.0	1	0.1	13	0.7	0	0.0	1	0.1
Gender												
Female	991	55.1	21	1.2	188	10.5	293	16.3	307	17.1	182	10.1
Male	818	45.5	30	1.7	152	8.5	147	8.2	304	16.9	185	10.3

Source: UH Community Colleges Human Resources Office, December 2010

FACULTY BY RANK, ETHNICITY, AND GENDER

Table 4 - Full Time Faculty by Rank, Ethnicity, and Gender Fall 2009

UHCC SYSTEM	Total		Professor		Associate		Assistant		Instructor	
	Count		Count		Count		Count		Count	
All Faculty	988	100	262	26.5	151	15.3	216	21.9	359	36.3
Asian and Pacific Islander	401	40.6	127	12.9	62	6.3	95	9.6	117	11.8
Chinese	62	6.3	22	2.2	11	1.1	13	1.3	16	1.6
Filipino	59	6.0	8	0.8	6	0.6	20	2.0	25	2.5
Indian Subcontinent	9	0.9	3	0.3	2	0.2	2	0.2	2	0.2
Japanese/Okinawan	235	23.8	83	8.4	41	4.1	52	5.3	59	6.0
Korean	17	1.7	6	0.6	1	0.1	4	0.4	6	0.6
Laotian	0	0.0	0	0.0	0	0.0	0	0.0	0	0.0
Thai	0	0.0	0	0.0	0	0.0	0	0.0	0	0.0
Vietnamese	0	0.0	0	0.0	0	0.0	0	0.0	0	0.0
Other Asian	19	1.9	5	0.5	1	0.1	4	0.4	9	0.9
Hawaiian and Pacific Islander	117	11.8	12	1.2	6	0.6	35	3.5	64	6.5
Guam Chamorro	0	0.0	0	0.0	0	0.0	0	0.0	0	0.0
Hawaiian/Part Hawaiian	114	11.5	12	1.2	6	0.6	34	3.4	62	6.3
Micronesian	0	0.0	0	0.0	0	0.0	0	0.0	0	0.0
Samoaan	3	0.3	0	0.0	0	0.0	1	0.1	2	0.2
Tongan	0	0.0	0	0.0	0	0.0	0	0.0	0	0.0
Other Pacific Islander	0	0.0	0	0.0	0	0.0	0	0.0	0	0.0
Mixed Pacific Islander	0	0.0	0	0.0	0	0.0	0	0.0	0	0.0
Mixed Asian Pacific Islander	0	0.0	0	0.0	0	0.0	0	0.0	0	0.0
Other Ethnic Groups	469	47.5	123	12.4	83	8.4	85	8.6	178	18.0
African American	8	0.8	1	0.1	1	0.1	1	0.1	5	0.5
American Indian/Alaska Native	8	0.8	2	0.2	0	0.0	1	0.1	5	0.5
Caucasian	443	44.8	119	12.0	82	8.3	81	8.2	161	16.3
Hispanic	10	1.0	1	0.1	0	0.0	2	0.2	7	0.7
Mixed	0	0.0	0	0.0	0	0.0	0	0.0	0	0.0
No Response	1	0.1	0	0.0	0	0.0	1	0.1	0	0.0
Gender										
Female	509	51.5	122	12.3	81	8.2	107	10.8	199	20.1
Male	468	47.4	130	13.2	70	7.1	108	10.9	160	16.2

Source: UH Community Colleges Human Resources Office, December 2010

STUDENT PROFILE

Table 5 - Student Enrollment - Ethnicity and Gender Fall 2009

	All Students		Male		Female		No Data	
	Count	%	Count	%	Count	%	Count	%
All Students	32,203		13,667	42.4	18,371	57.0	165	0.5
Asian and Pacific Islander	21,471	66.7	9,161	28.4	12,229	38.0	81	0.3
Asian	13,264	41.2	6,024	18.7	7,199	22.4	41	0.1
Chinese	1,276	4.0	627	1.9	647	2.0	2	0.0
Filipino	5,349	16.6	2,271	7.1	3,053	25.0	18	0.1
Indian Subcontinent	28	0.1	11	0.0	17	0.0	0	0.0
Japanese	3,450	10.7	1,564	4.9	1,882	4.0	4	0.0
Korean	680	2.1	307	1.0	371	2.0	2	0.0
Laotian	59	0.2	26	0.1	33	0.0	0	0.0
Mixed Asian	1,956	6.1	990	3.1	959	7.0	7	0.0
Other Asian	144	0.4	77	0.2	66	1.0	0	0.0
Thai	47	0.1	16	0.0	31	0.0	0	0.0
Vietnamese	275	0.9	135	0.4	140	0.0	0	0.0
Hawaiian and Pacific Islander	8,207	25.5	3,137	9.7	5,030	15.6	40	0.1
Guam Chamorro	78	0.2	32	0.1	46	0.1	0	0.0
Hawaiian Part Hawaiian	7,175	22.3	2,733	8.5	4,408	13.7	34	0.1
Micronesian	191	0.6	69	0.2	121	0.4	1	0.0
Samoan	242	0.8	96	0.3	146	0.5	0	0.0
Tongan	87	0.3	26	0.1	59	0.2	2	0.0
Mixed Pacific Islander	285	0.9	127	0.4	155	0.5	3	0.0
Other Pacific Islander	149	0.5	54	0.2	95	0.3	0	0.0
Other Ethnic Groups	10,732	33.3	4,506	14.0	6,142	19.1	84	0.3
African American	388	1.2	195	0.6	190	0.6	3	0.0
American Indian/Alaskan Native	147	0.5	48	0.1	98	0.3	1	0.0
Caucasian	5,008	15.6	2,095	6.5	2,872	8.9	41	0.1
Hispanic	784	2.4	300	0.9	477	1.5	7	0.0
Mixed	3,875	12.0	1,605	5.0	2,254	7.0	16	0.0
No Response	530	1.6	263	0.8	251	0.8	16	0.0

Source: ODS – IRO_BASE_UH (Census)

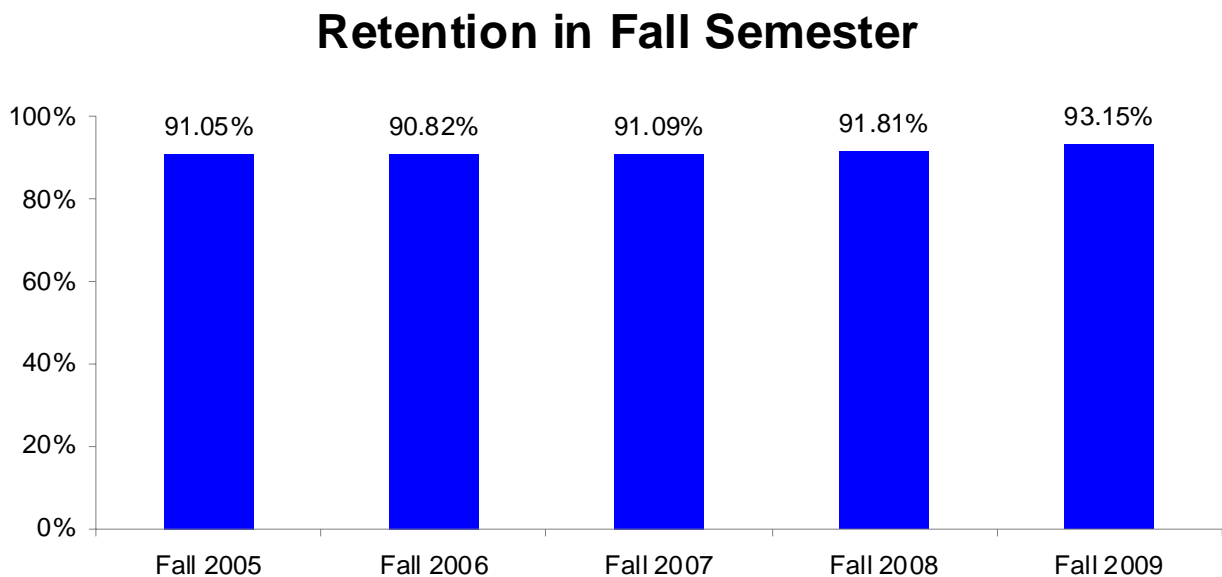
STUDENT RETENTION, PERSISTENCE, AND DEGREES AND CERTIFICATES AWARDED

The following figures show measures of student success in meeting educational objectives and demonstrating student movement.

RETENTION

Retention rate refers to those students who are enrolled in a course at the fall census date and who do not drop or withdraw before the end of the semester. Within the University of Hawai'i Community College System, this has also been called Course Completion Rate.

Figure 9 - Retention

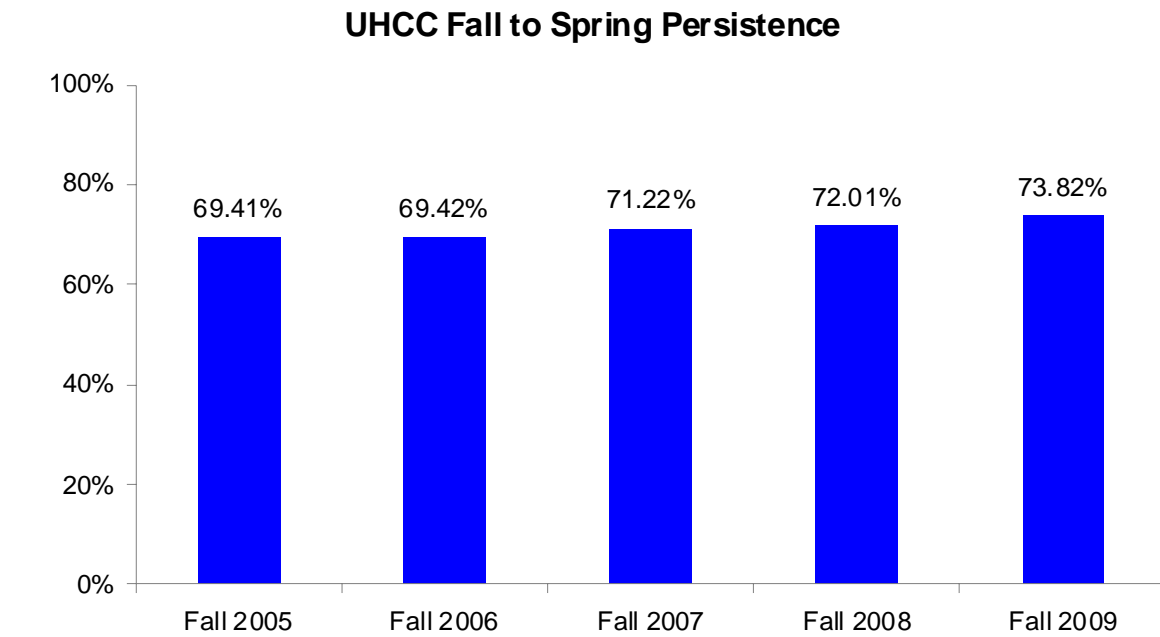


Source: ODS – IRO_REGS_UH (End of Semester)

PERSISTENCE

Persistence refers to students enrolled in the college at the fall census fall, for whom the college is their “home” campus, and who are also enrolled in that college in the following spring.

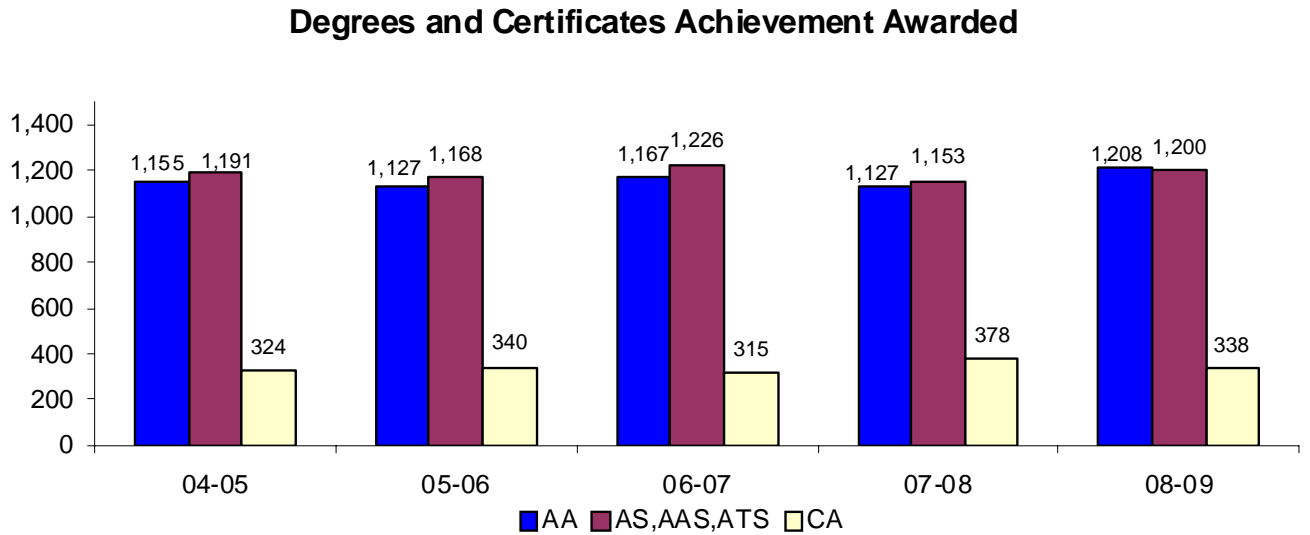
Figure 10 - Persistence



Source: ODS – IRO_REGS_UH (Census)

DEGREES AND CERTIFICATES AWARDED

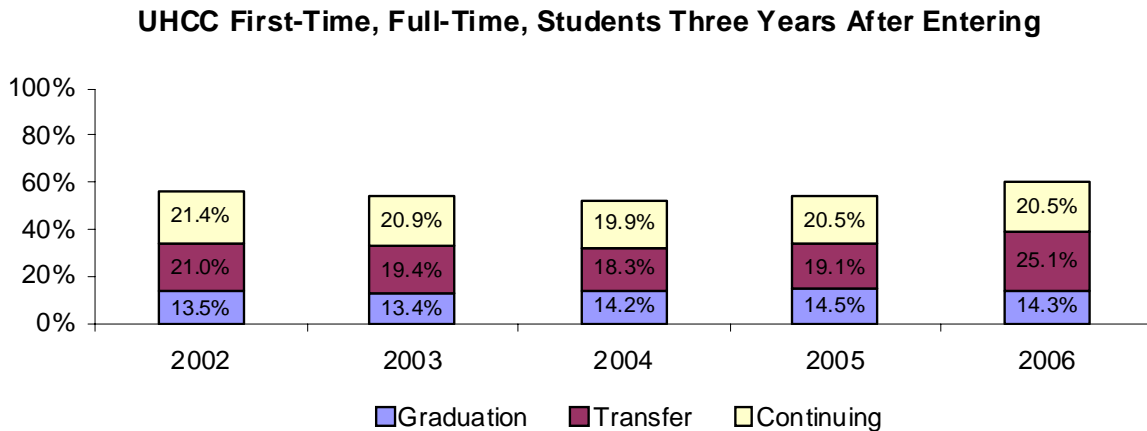
Figure 11 - Annual Number Degrees and Certificates Awarded



Source: MAPS – Degrees and Certificates Earned Fiscal Year Table 1

CONTINUING ENROLLMENT, TRANSFER, AND GRADUATION

Figure 12 - Continuing Enrollment, Transfer, and Graduation of first-time, full-time, degree-seeking students within 150 of first time enrollment



Source: IPEDS – Graduation Rate Survey

Notes:

- 1) Numbers are unduplicated
- 2) Graduation – first time, full time students who received a degree or certificate within 150 of time from first time enrollment
- 3) Transfer – first time, full-time students who transfer (as matched by National Student Clearinghouse data) to another postsecondary institution within 150 of time from first time enrollment
- 4) Continuing – first time, full time students who are still enrolled at the same institution within 150 of time from first time enrollment and who have not received a degree or certificate

TRANSFERS TO COLLEGES AND UNIVERSITIES

Table 6 looks at the transfer behaviors of students whose last term of attendance was between the semesters of Fall 2005 to Summer 2009 compared against National Student Clearinghouse (NSC) data in August 2010. As some students have attended multiple colleges, the first college that a student attended was selected for this analysis.

Table 6 - Transfer Numbers and Rates

Last Term Attended	Total Number of Records	Total Transfers		Transfer to UH 4-Year Institutions		Transfers to a UH Community College		Transfers to Hawaii Private Institutions		Transfer to Out of State Institutions	
		N		N		N		N		N	
Fall 2005	5,294	2,121	40.06	542	25.55	689	32.48	140	6.60	750	35.36
Fall 2006	5,315	2,107	39.64	510	24.21	771	36.59	131	6.22	695	32.99
Fall 2007	5,304	1,899	35.80	489	25.75	673	35.44	140	7.37	597	31.44
Fall 2008	5,888	1,896	32.20	488	25.74	683	36.02	154	8.12	571	30.12
Fall 2009	7,549	1,464	19.39	272	18.58	572	39.07	151	10.31	469	32.04
Spring 2006	5,789	2,399	41.44	492	20.51	997	41.56	149	6.21	761	31.72
Spring 2007	5,910	2,459	41.61	565	22.98	1062	43.19	122	4.96	710	28.87
Spring 2008	6,322	2,302	36.41	553	24.02	997	43.31	113	4.91	639	27.76
Spring 2009	7,297	2,140	29.33	492	22.99	1022	47.76	128	5.98	498	23.27
Summer 2006	1,371	880	64.19	121	13.75	433	49.20	35	3.98	291	33.07
Summer 2007	1,342	809	60.28	114	14.09	396	48.95	44	5.44	255	31.52
Summer 2008	1,280	707	55.23	106	14.99	321	45.40	31	4.38	249	35.22
Summer 2009	1,301	619	47.58	76	12.28	266	42.97	30	4.85	247	39.90

Sources:

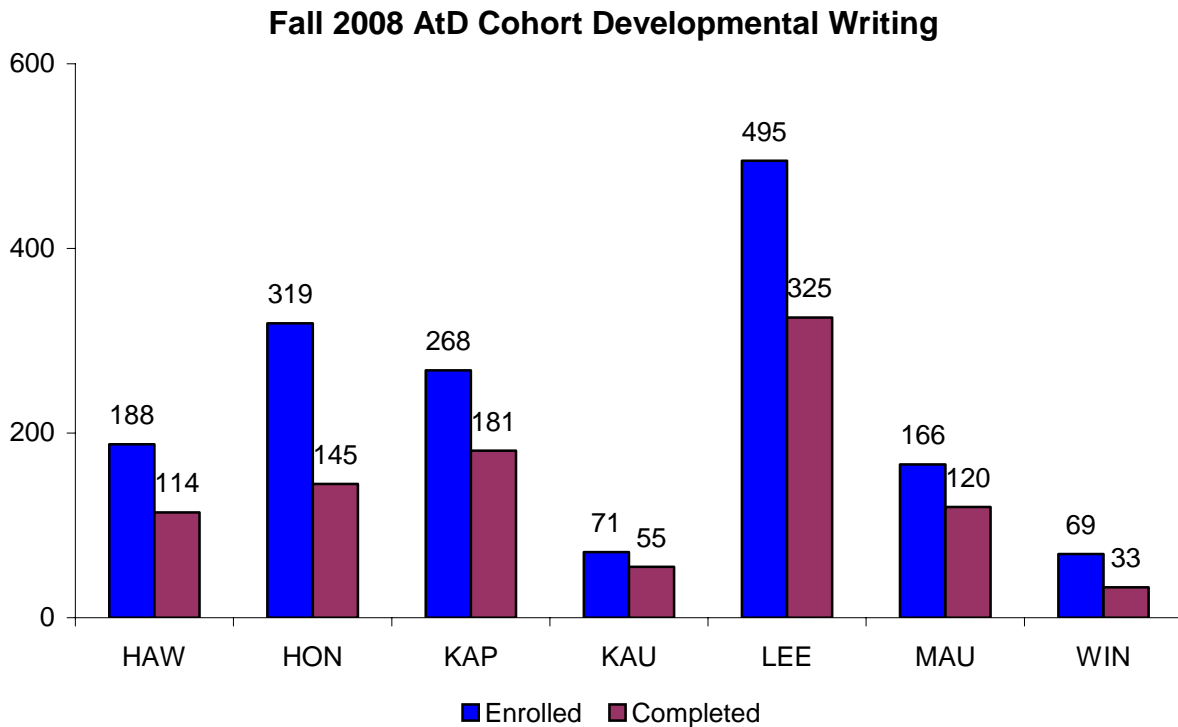
- 1) National Student Clearinghouse
- 2) Operational Data Store (ODS)

DEVELOPMENTAL EDUCATION COMPLETION

Students lacking academic preparation for their chosen college programs are a national and local concern. The University of Hawaii Community College system is committed to increasing the number and percent of students enrolled in developmental intervention who successfully complete at least one course in the developmental sequence within their first academic year thus making progress towards degree applicable instruction.

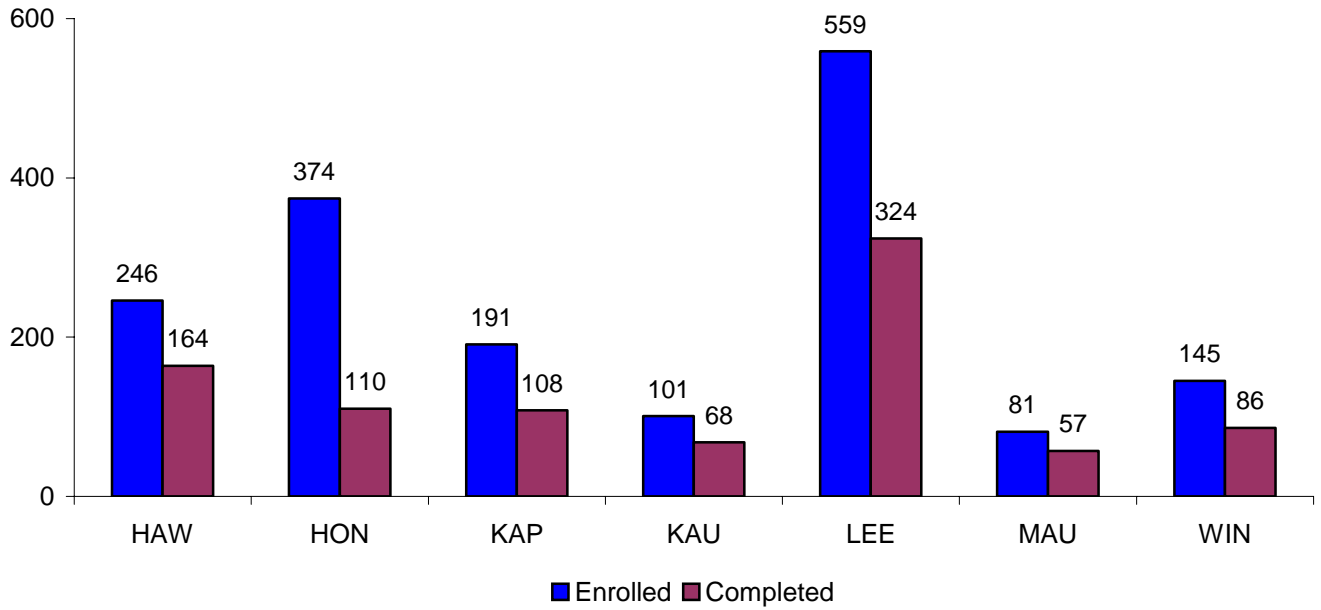
The following are measures of the Achieving the Dream Cohort students who enroll in any developmental course and successfully complete at least one developmental course within the first academic year.

Figure 13 - Developmental Education Completion



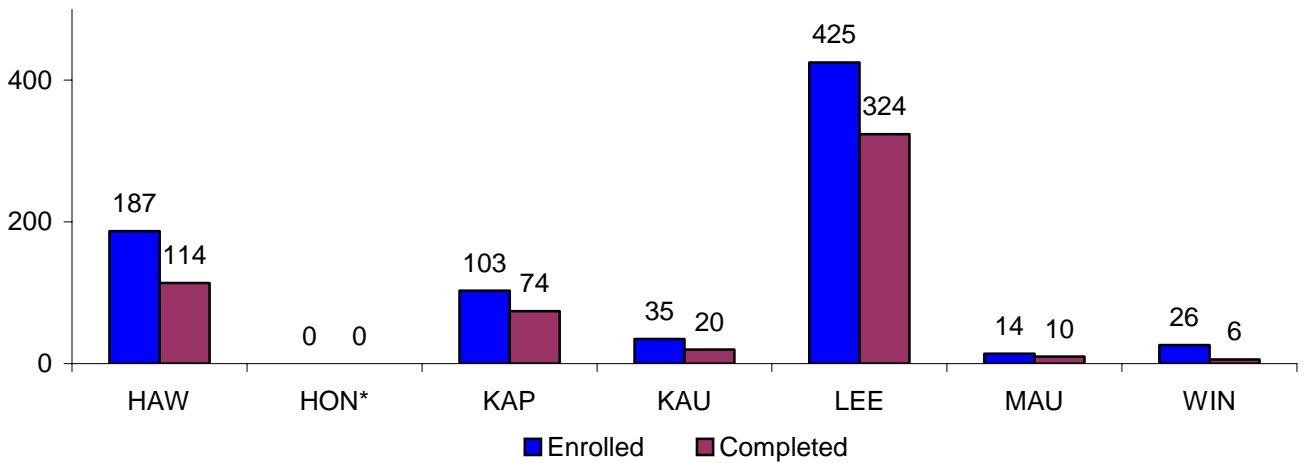
Source: AtD -- from UHCC Strategic Plan 2.3

Fall 2008 AtD Cohort Developmental Math



Source: AtD -- from UHCC Strategic Plan 2.3

Fall 2008 AtD Cohort Developmental Reading

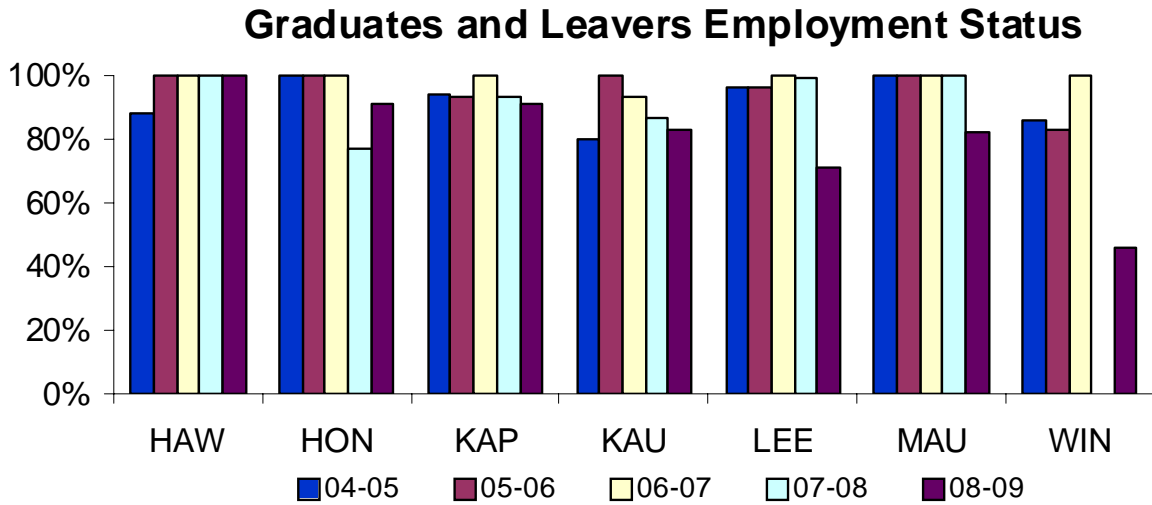


Source: AtD -- from UHCC Strategic Plan 2.3

*Developmental Reading not offered at Honolulu in 2008-2009

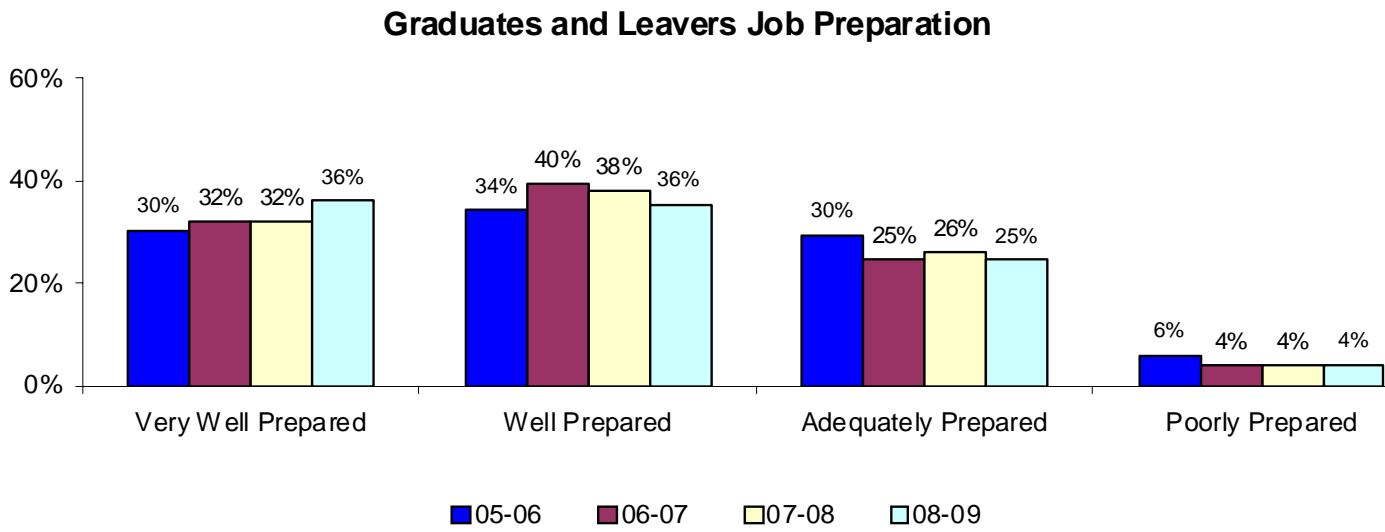
Job Placement and Preparation

Figure 14 - Employment Status



Source: UH Community Colleges campus Graduate and Leavers surveys

Figure 15 - Graduates and Leavers Job Preparation

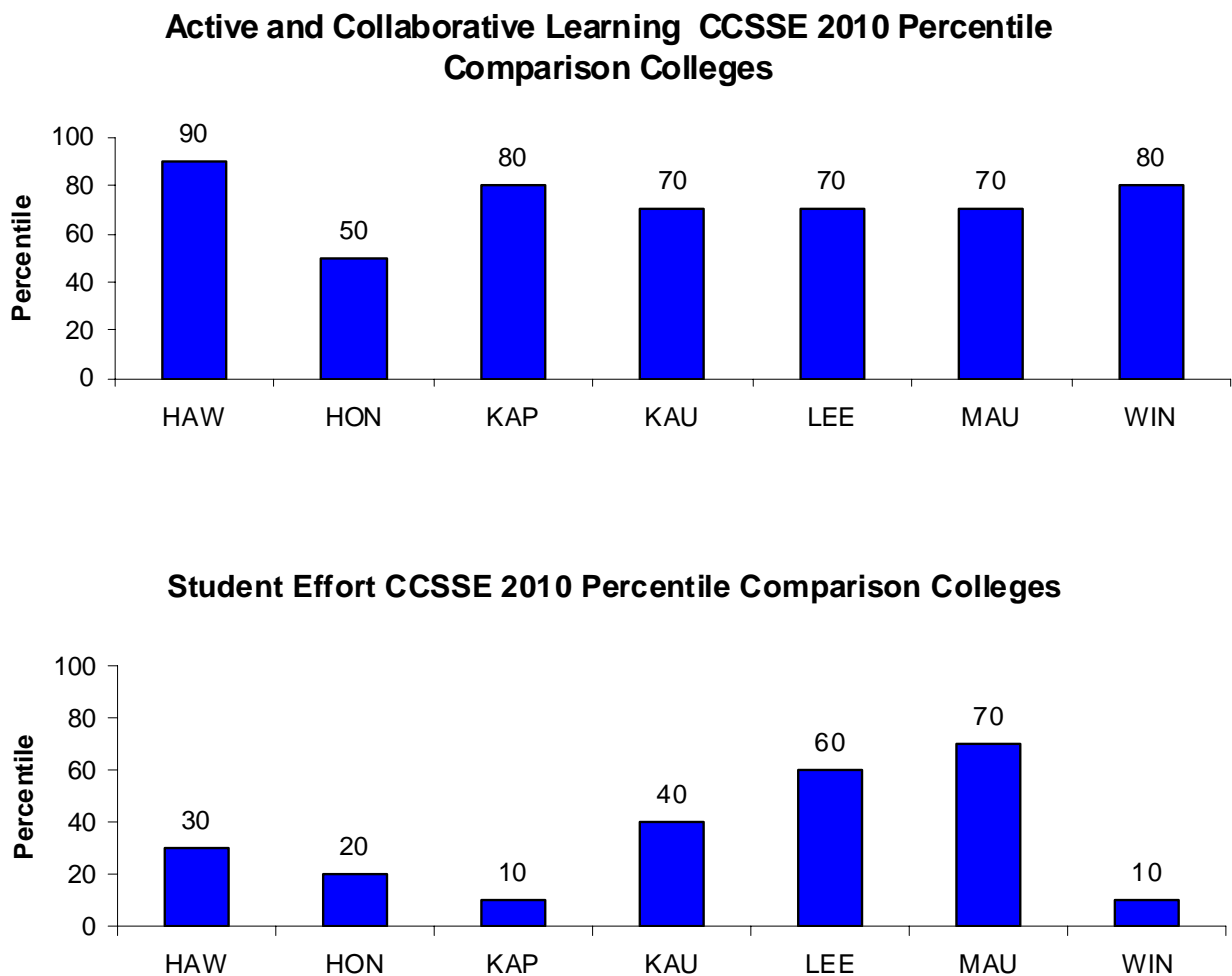


Source: UH Community Colleges campus Graduate and Leavers surveys

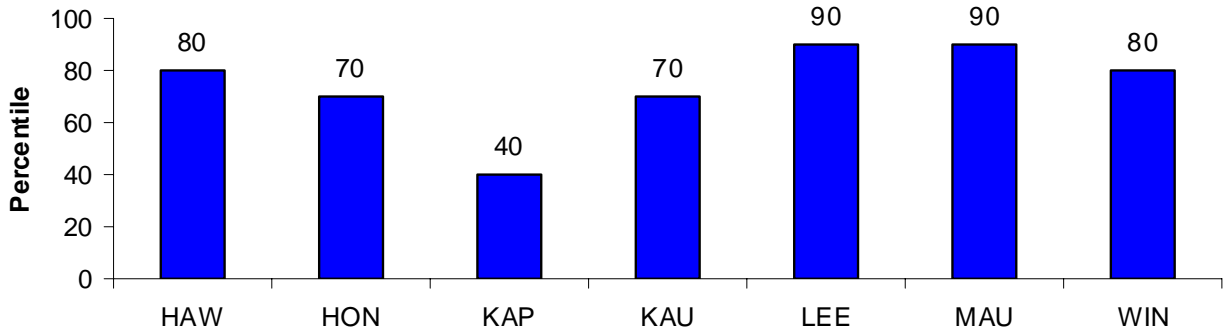
STUDENT ENGAGEMENT

Research shows that the more actively engaged students are –with college faculty and staff, with other students, and with the subject matter they study – the more likely they are to learn and persist toward achieving their academic goals. Student engagement, therefore, is a valuable yardstick for assessing whether, and to what extent, an institution is employing educational practices likely to produce successful results. Scores are displayed in percentiles against all other Community College Survey Student Engagement (CCSSE) colleges surveyed of similar size.

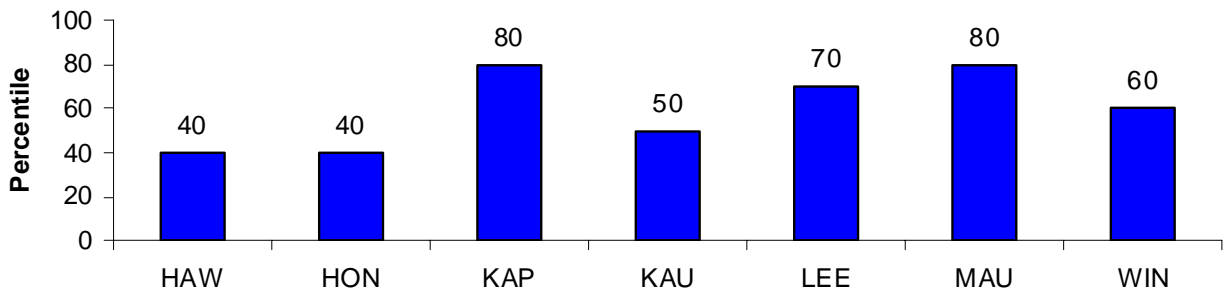
Figure 16 - CCSSE Benchmark Percentiles



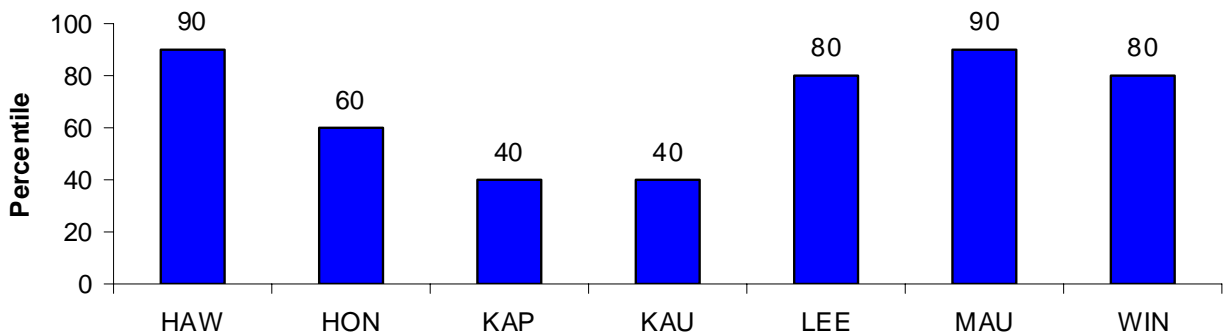
Academic Challenge CCSSE 2010 Percentile Comparison Colleges



Student-Faculty Interaction CCSSE 2010 Percentile Comparison Colleges



Support for Learners CCSSE 2010 Percentile Comparison Colleges



Source: CCSSE 2008 National Report