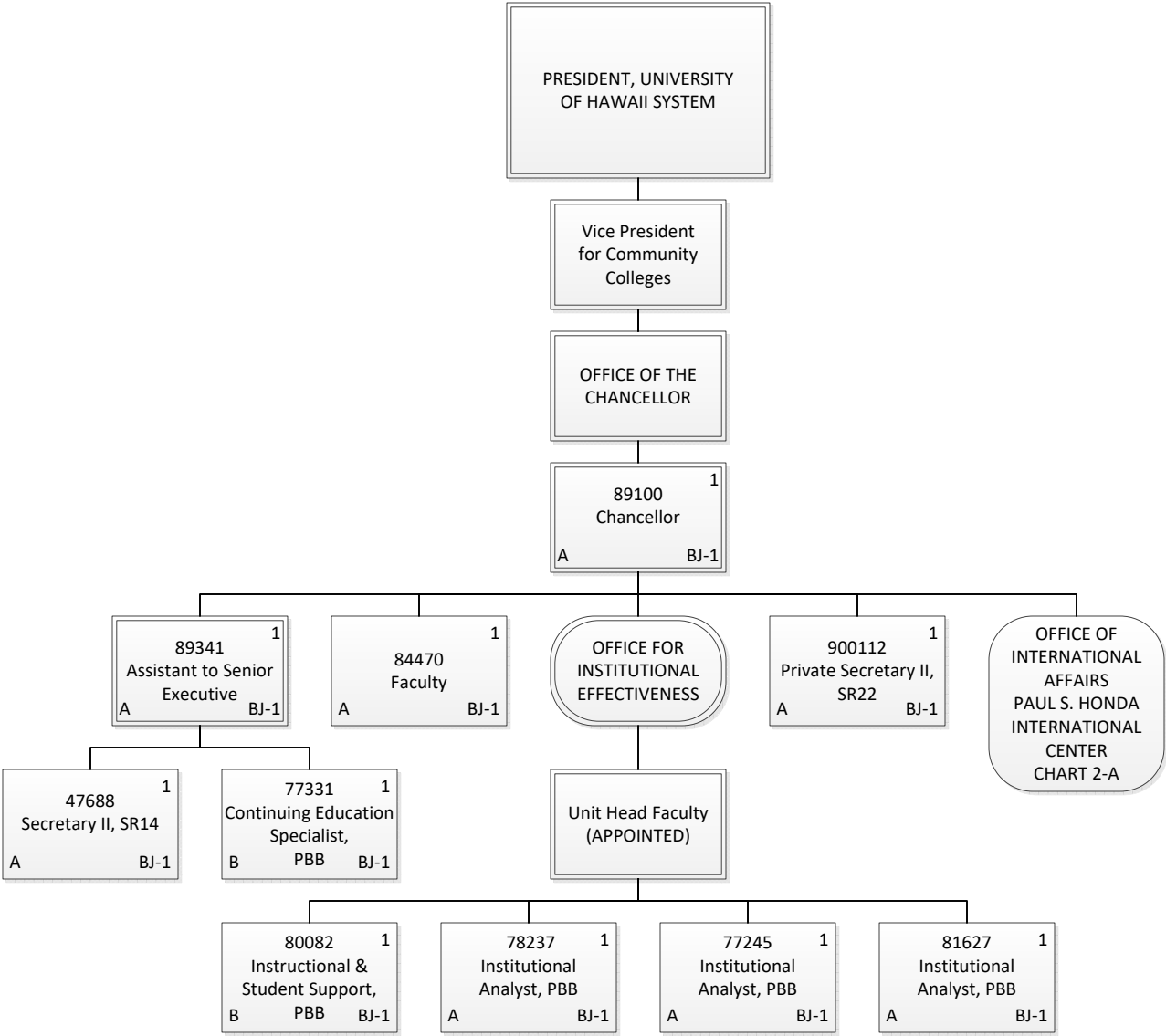
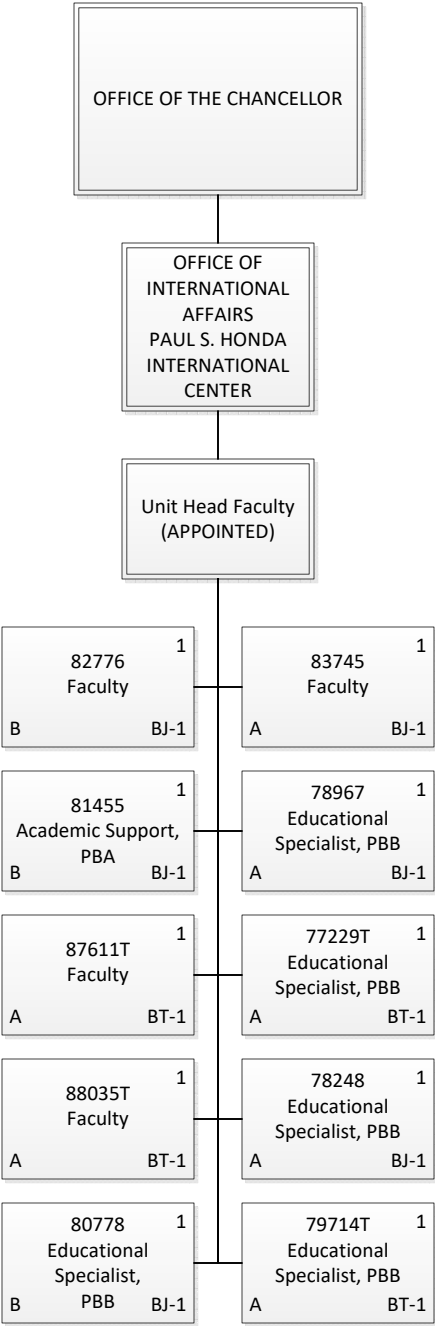


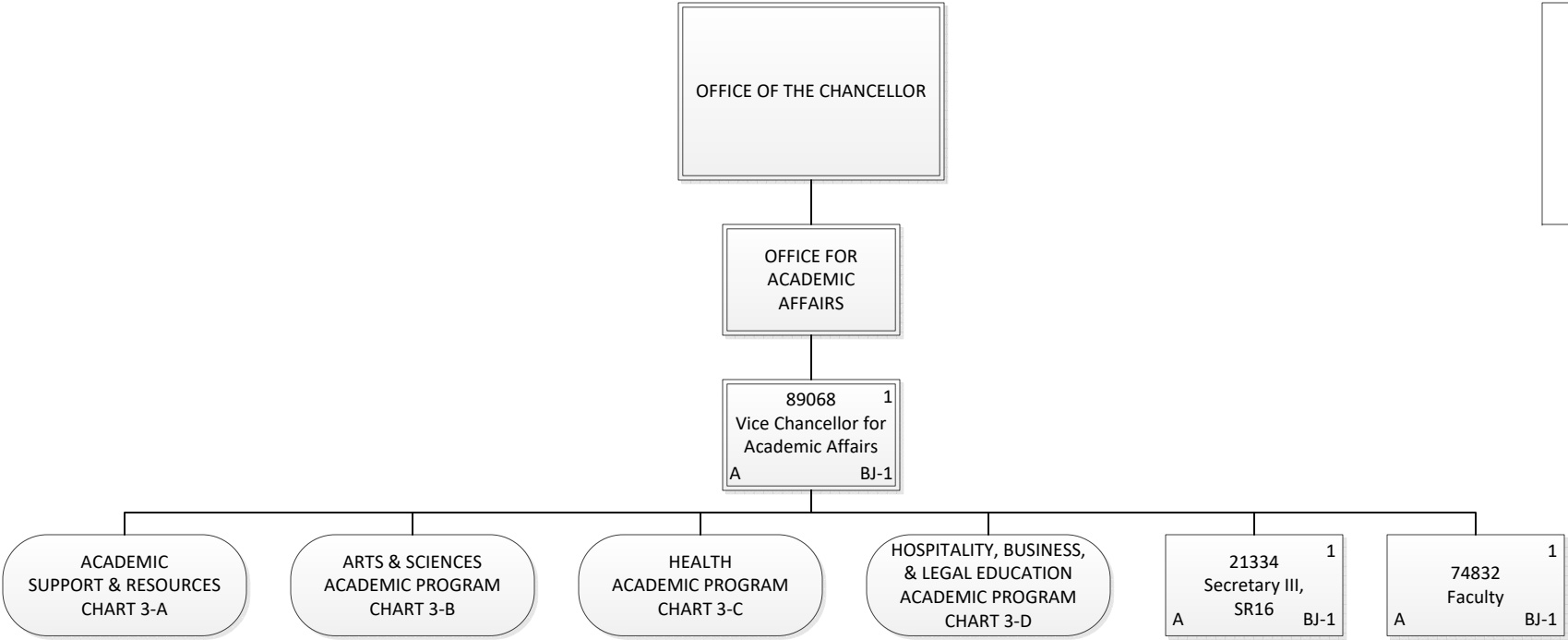
Permanent	410.00
General Funds	393.00
Special Funds	17.00
Temporary	29.00
General Funds	29.00
Grand Total	439.00



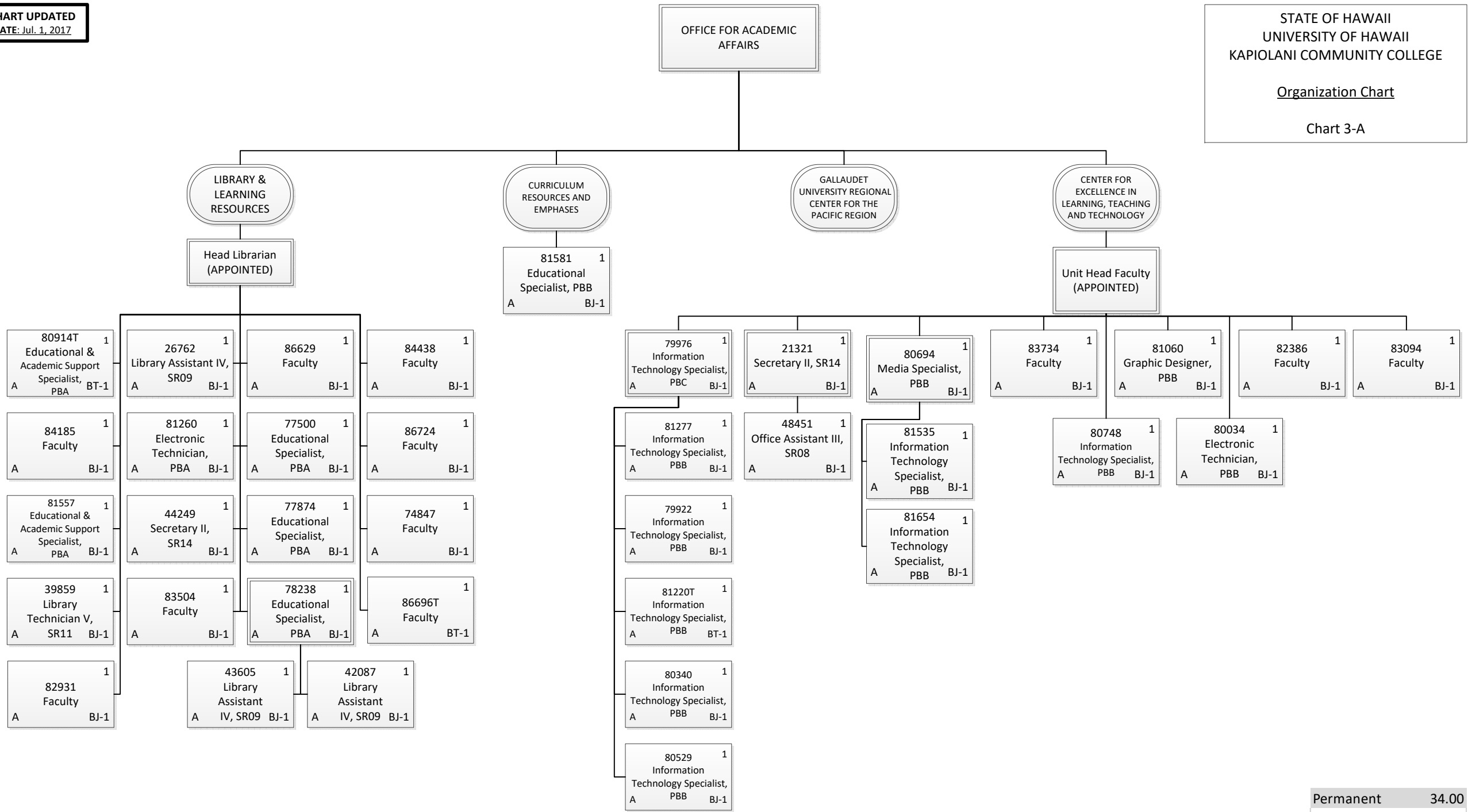
Permanent	10.00
General Funds	8.00
Special Funds	2.00
Grand Total	10.00



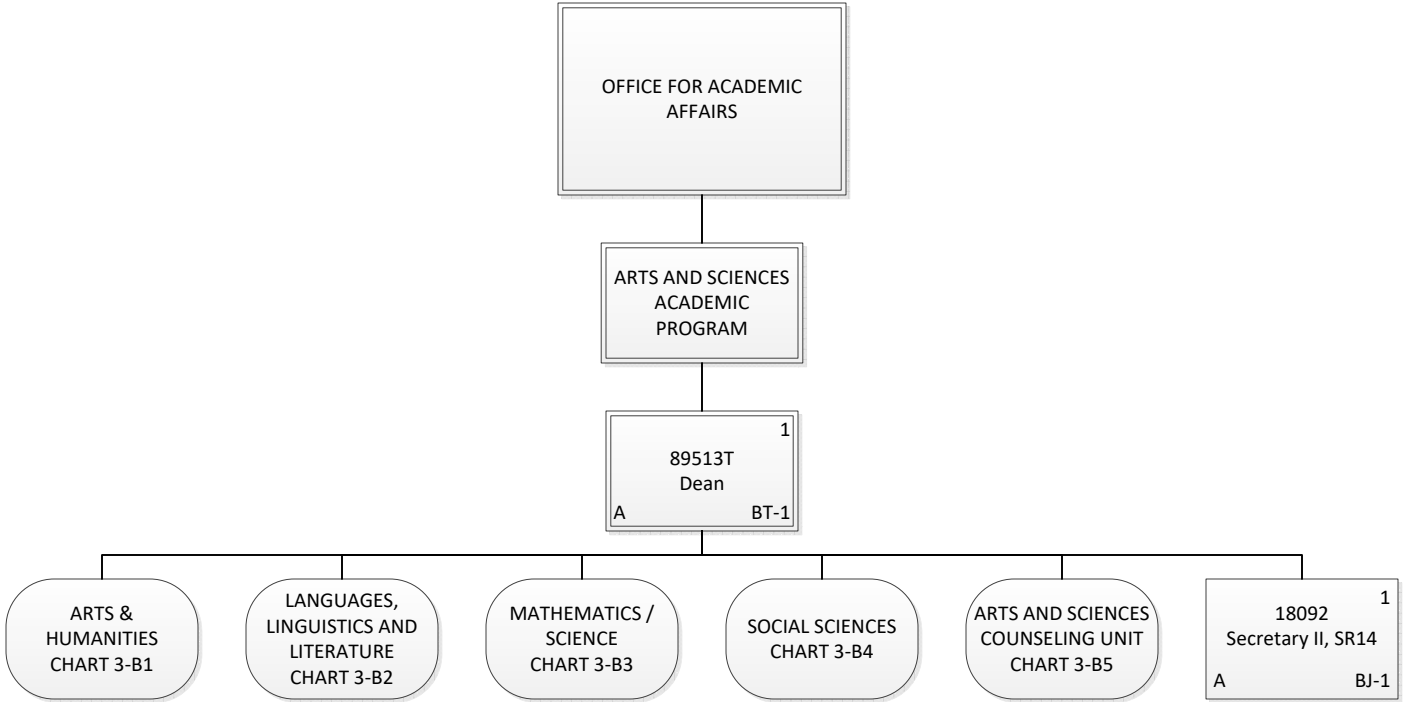
Permanent	6.00
General Funds	3.00
Special Funds	3.00
Temporary	4.00
General Funds	4.00
Grand Total	10.00



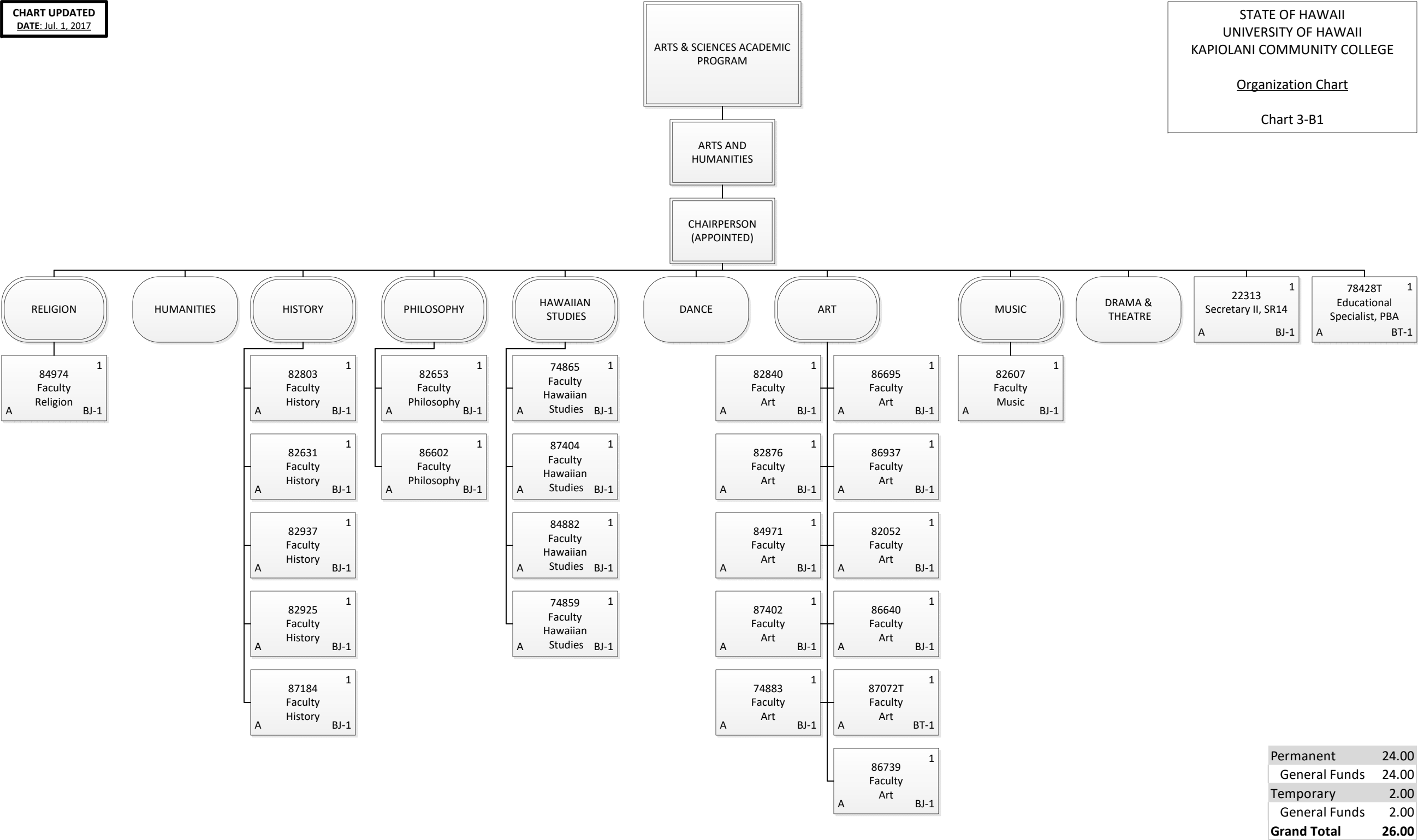
Permanent	3.00
General Funds	3.00
Grand Total	3.00

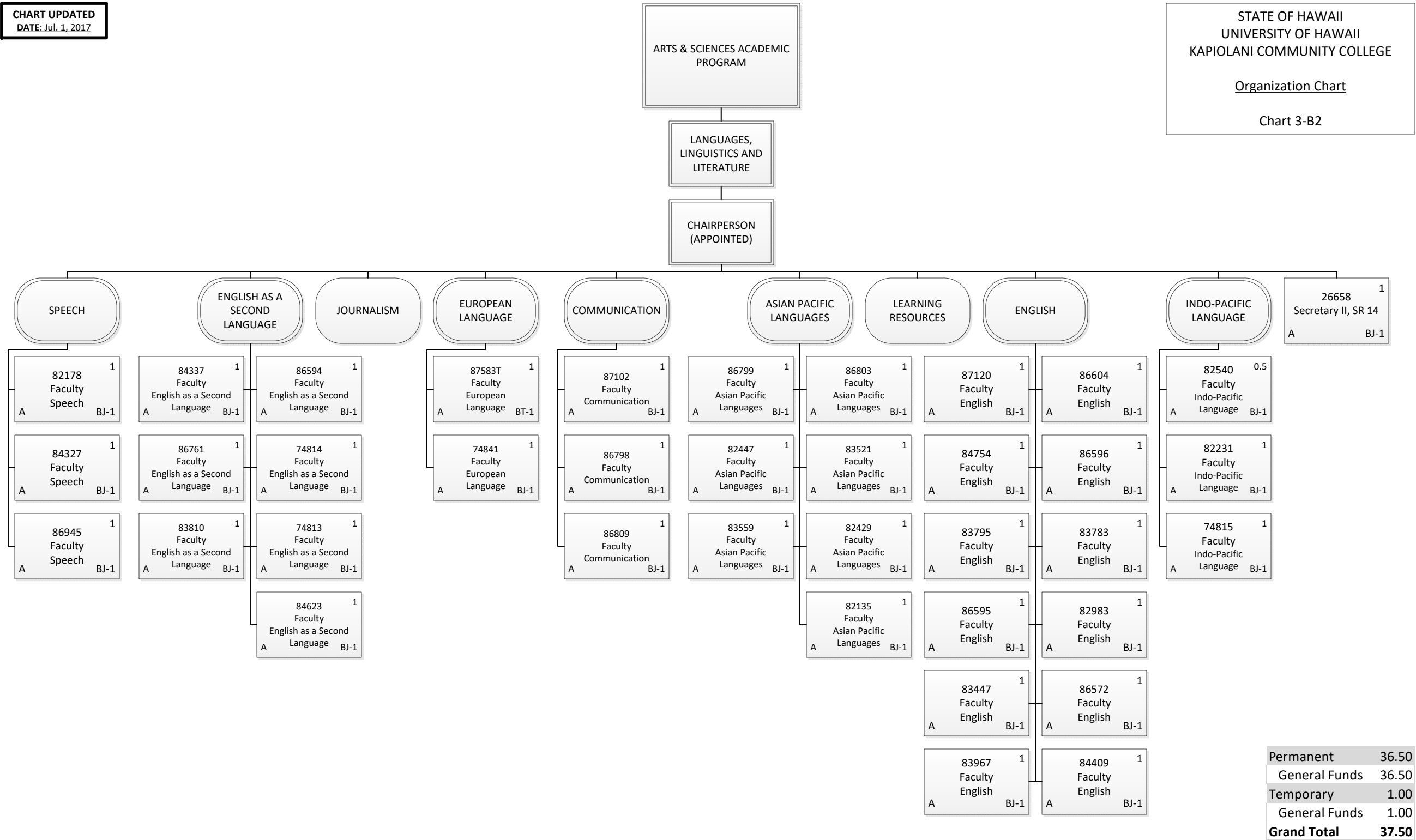


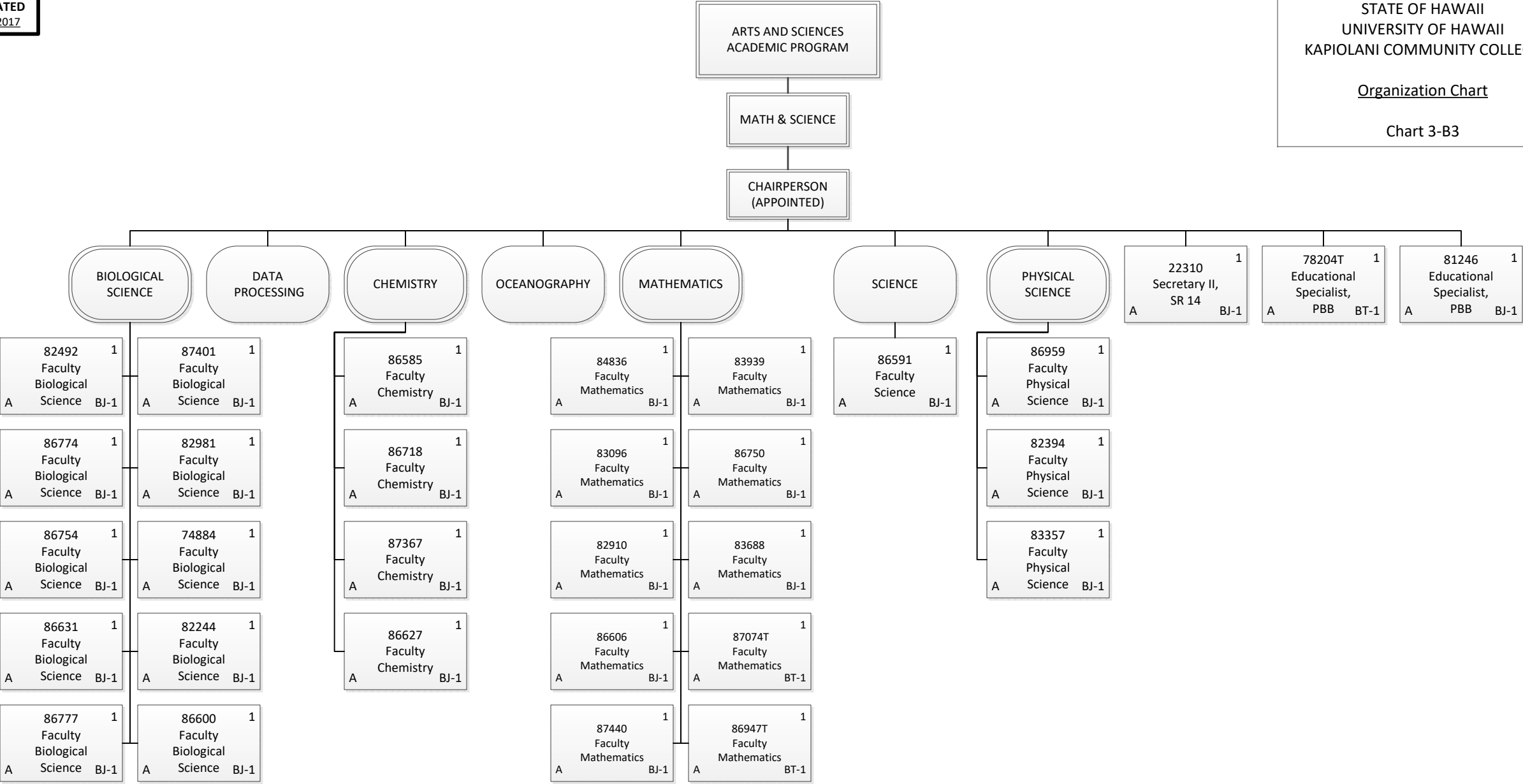
Permanent	34.00
General Funds	34.00
Temporary	3.00
General Funds	3.00
Grand Total	37.00



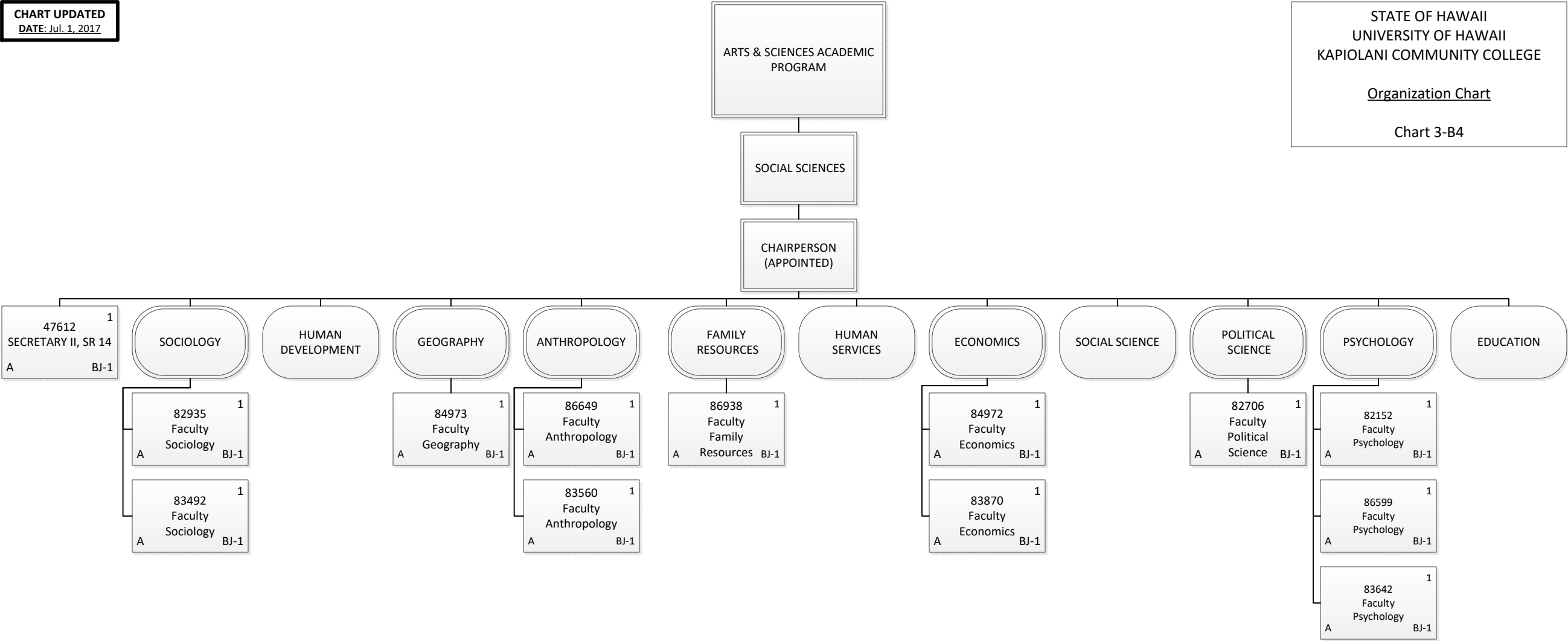
Permanent	1.00
General Funds	1.00
Temporary	1.00
General Funds	1.00
Grand Total	2.00



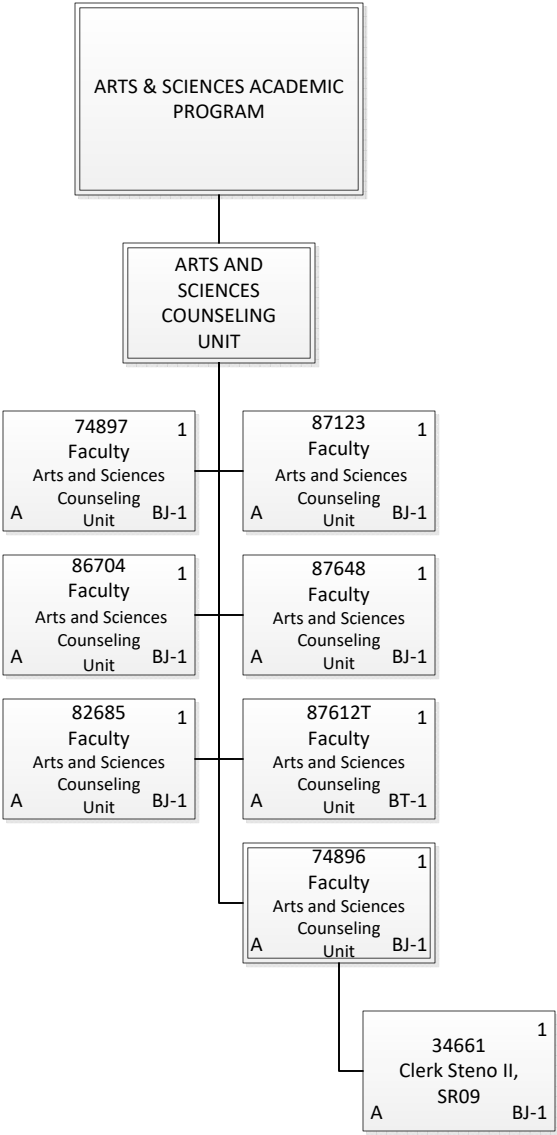




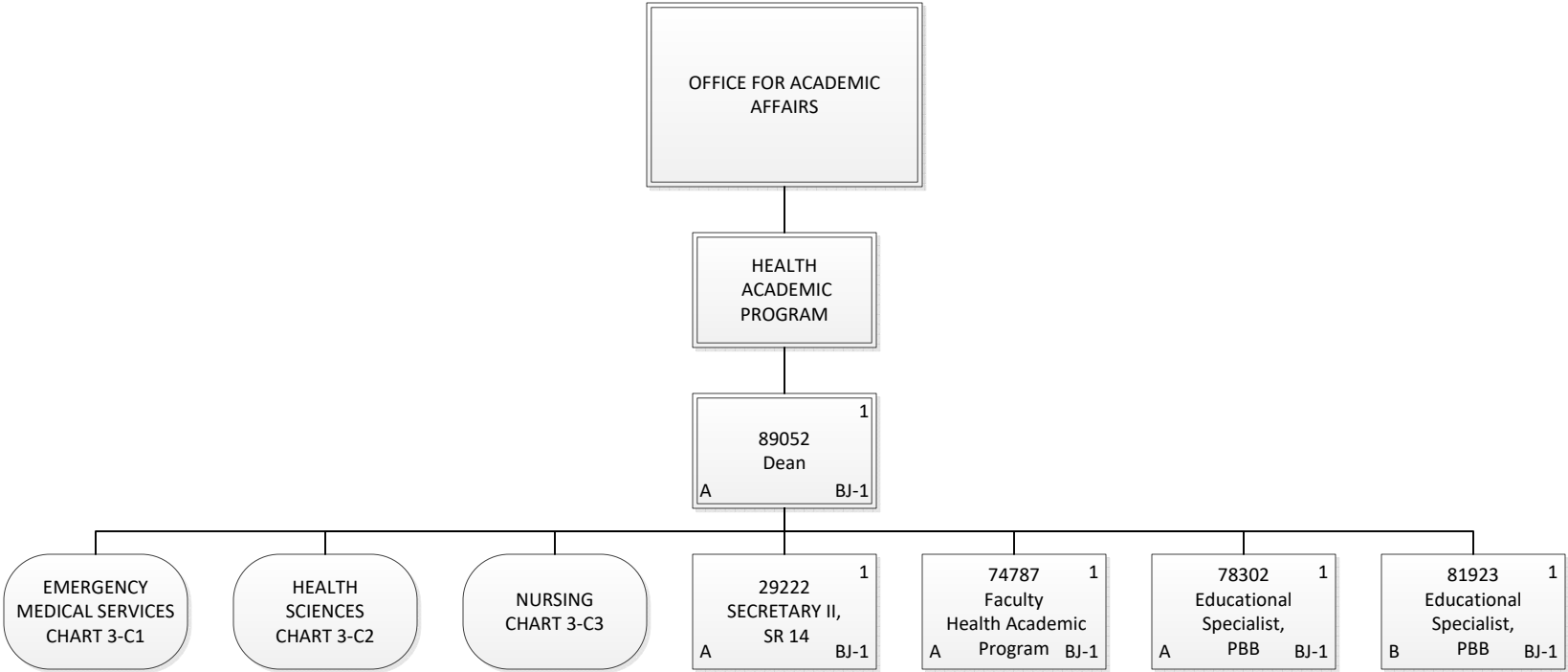
Permanent	28.00
General Funds	28.00
Temporary	3.00
General Funds	3.00
Grand Total	31.00



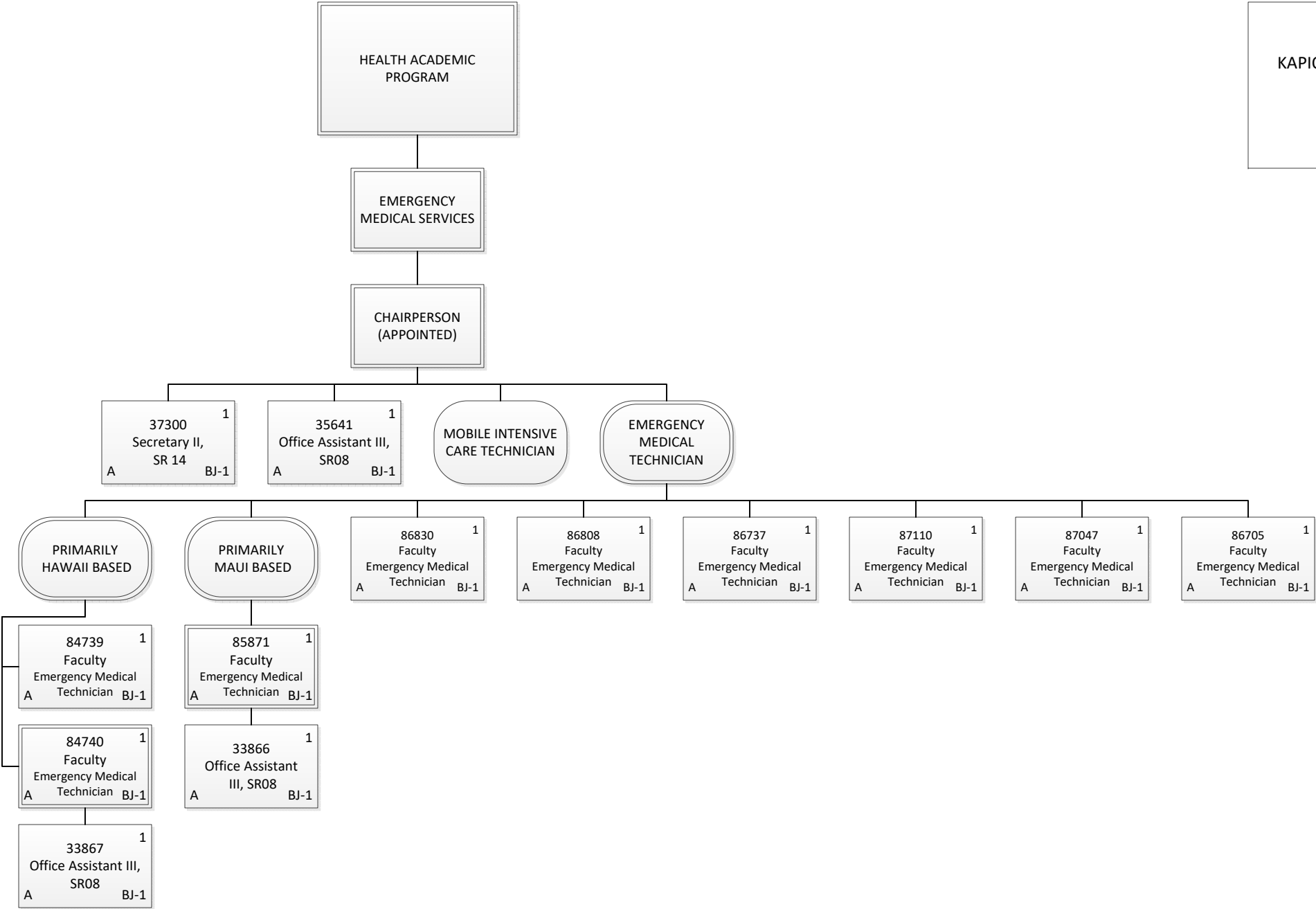
Permanent	13.00
General Funds	13.00
Grand Total	13.00



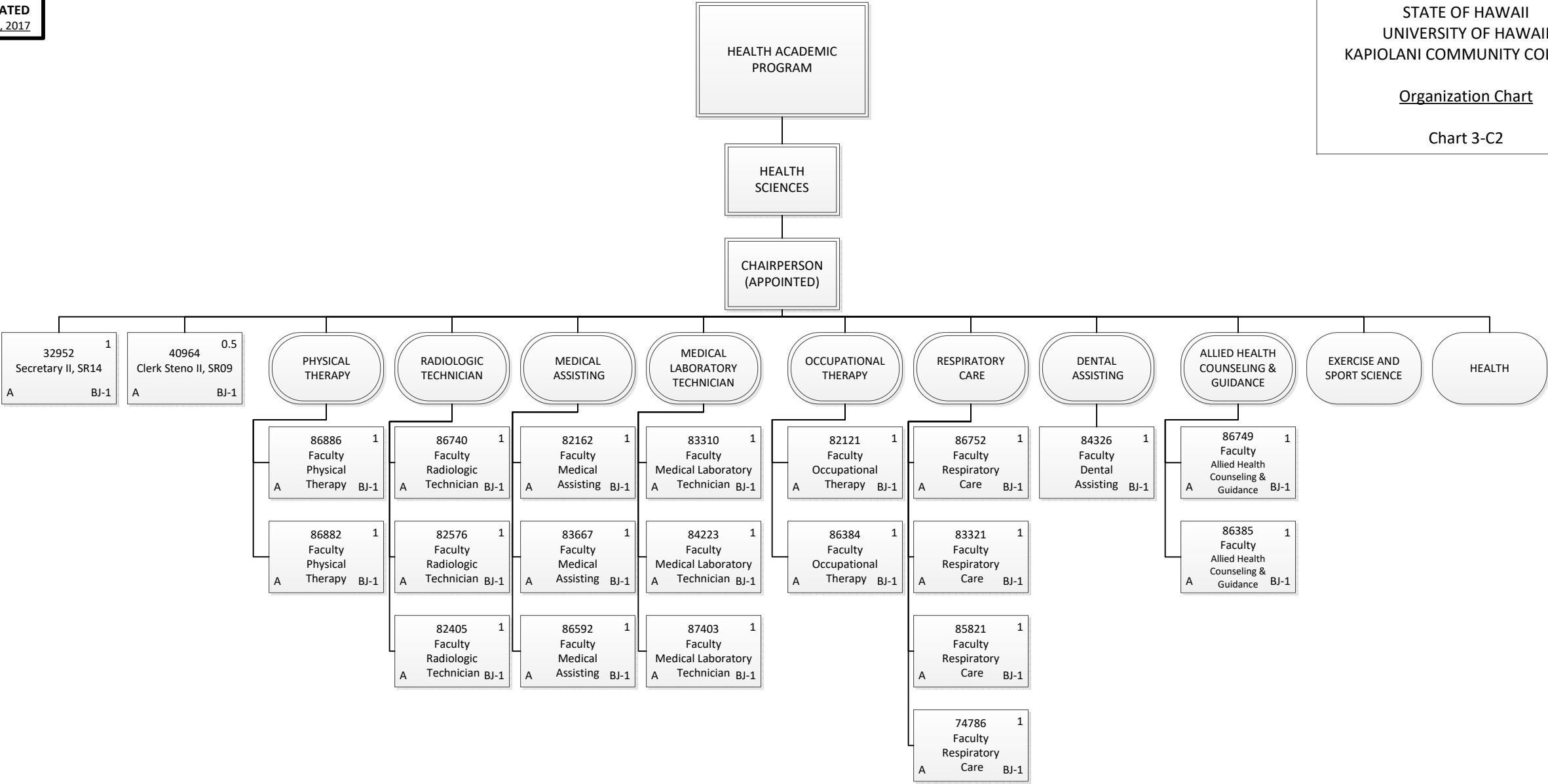
Permanent	7.00
General Funds	7.00
Temporary	1.00
General Funds	1.00
Grand Total	8.00



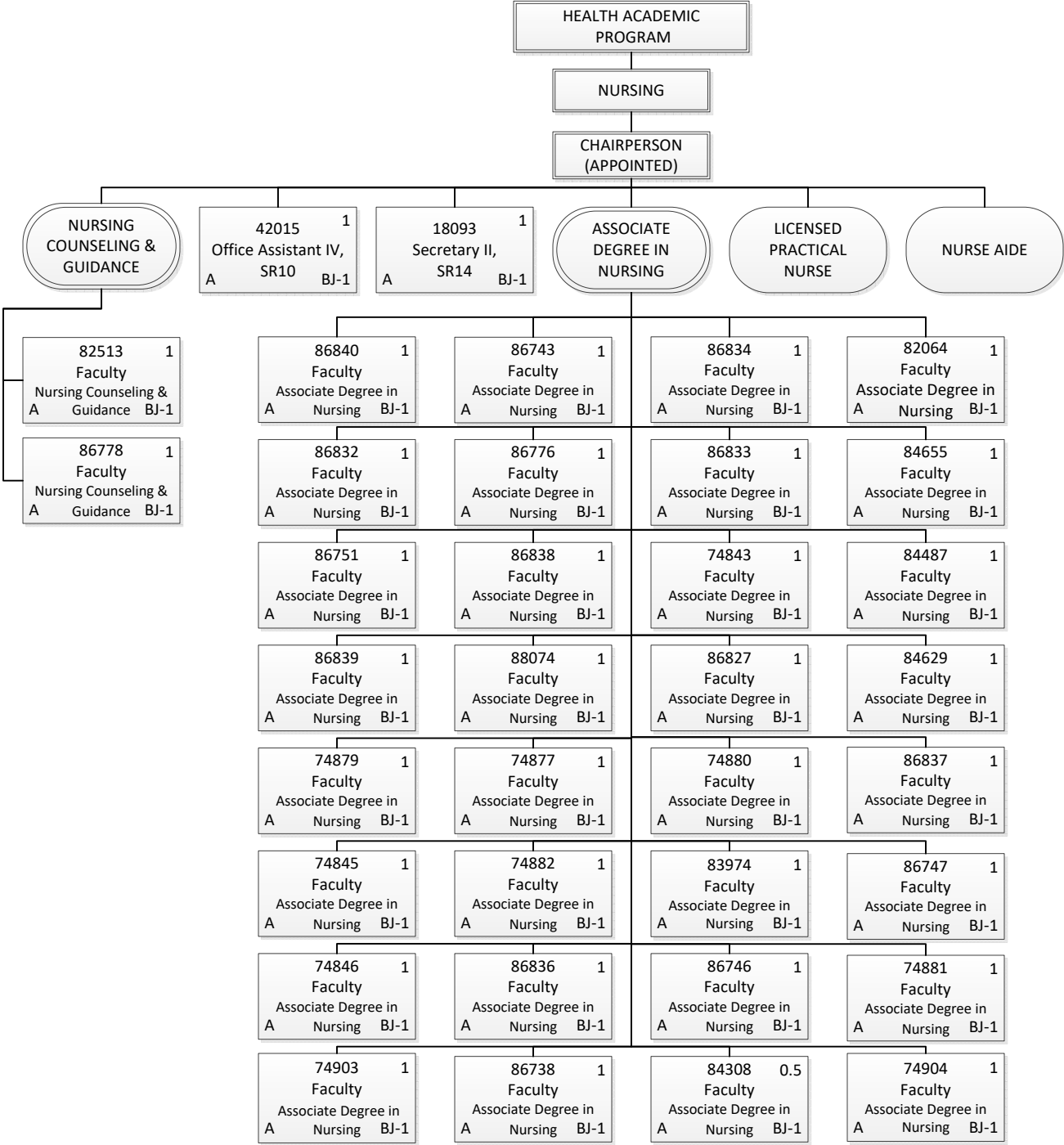
Permanent	5.00
General Funds	4.00
Special Funds	1.00
Grand Total	5.00

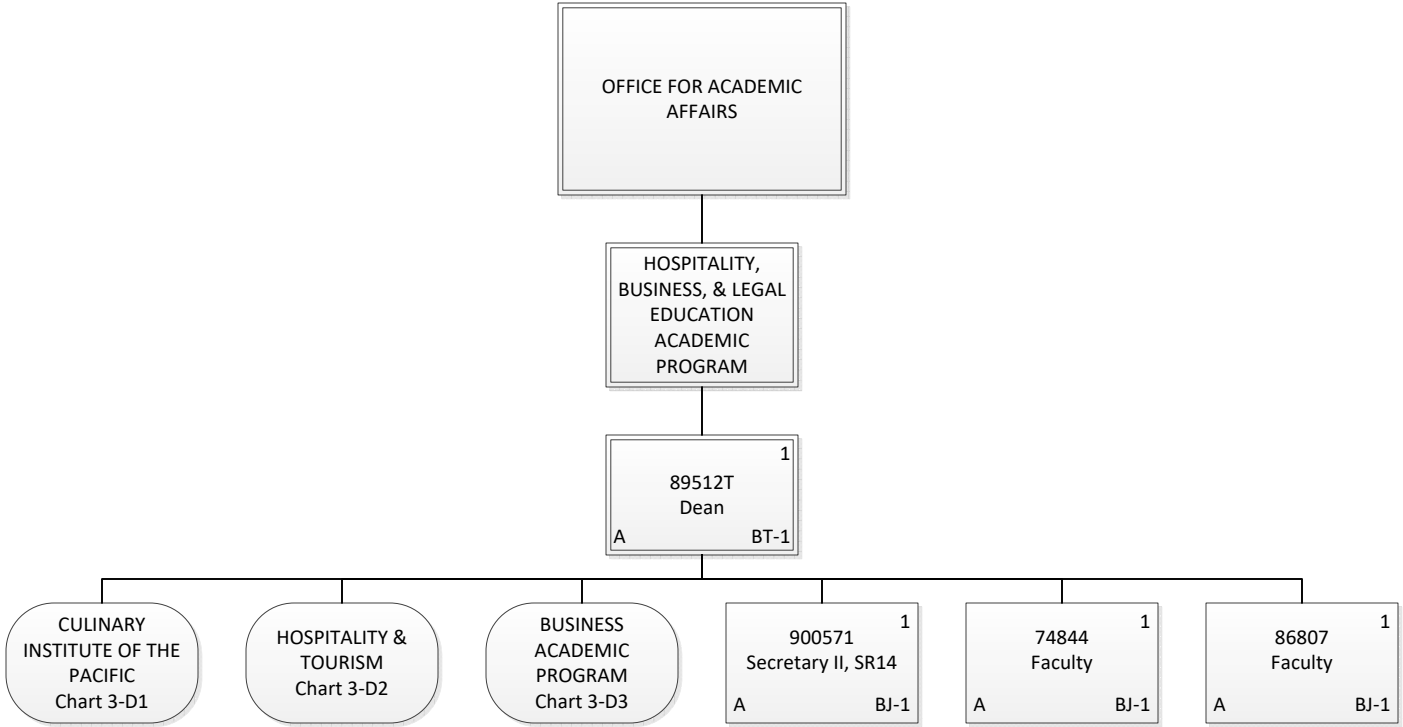


Permanent	13.00
General Funds	13.00
Grand Total	13.00

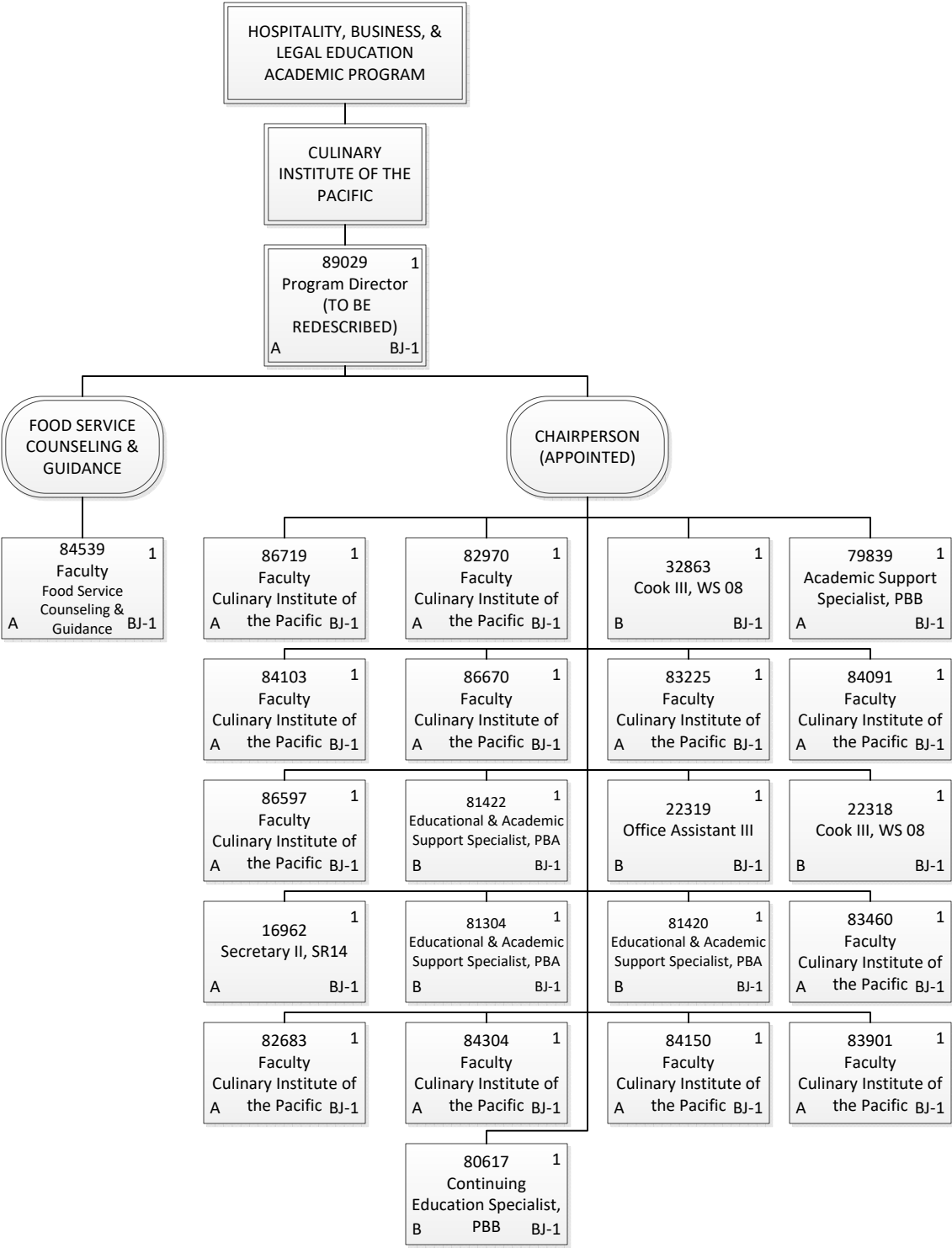


Permanent	21.50
General Funds	21.50
Grand Total	21.50

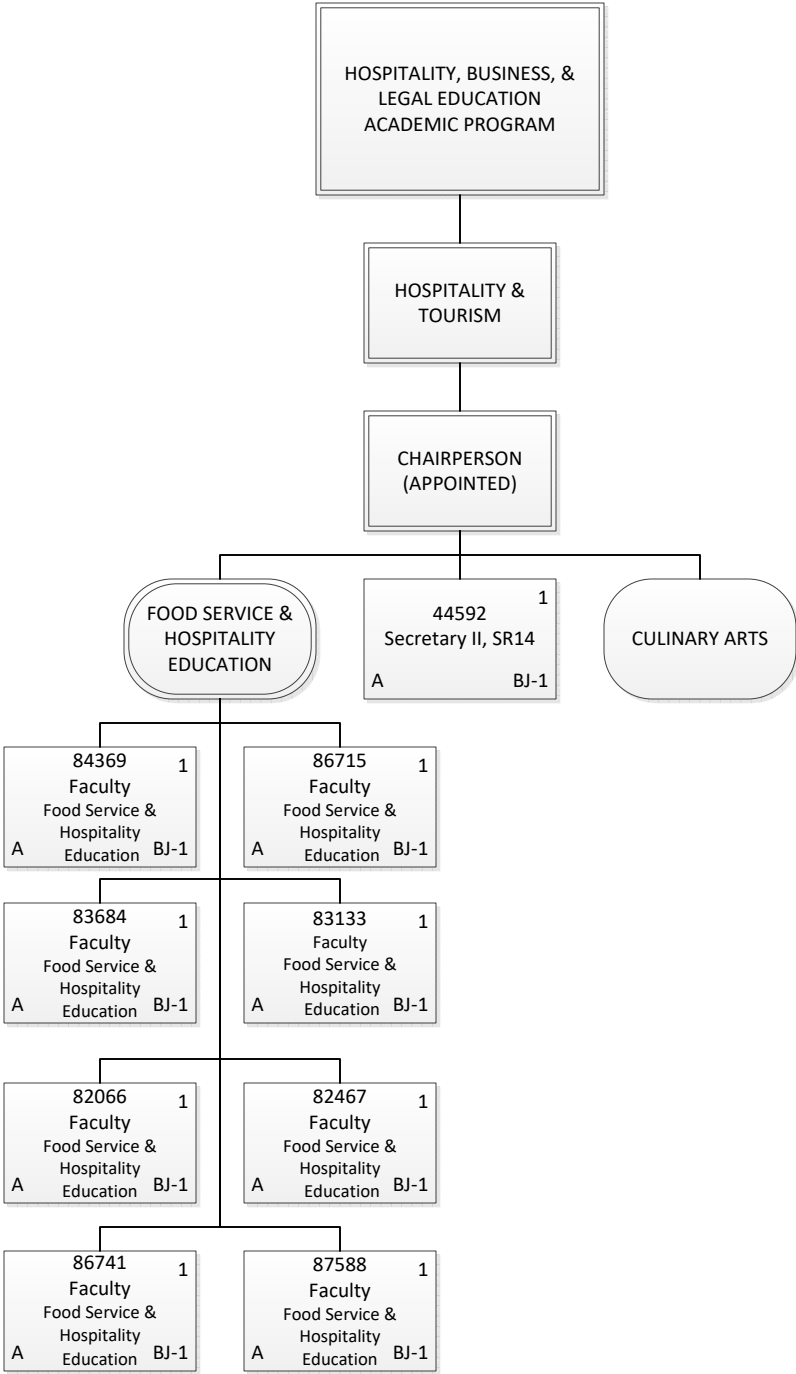




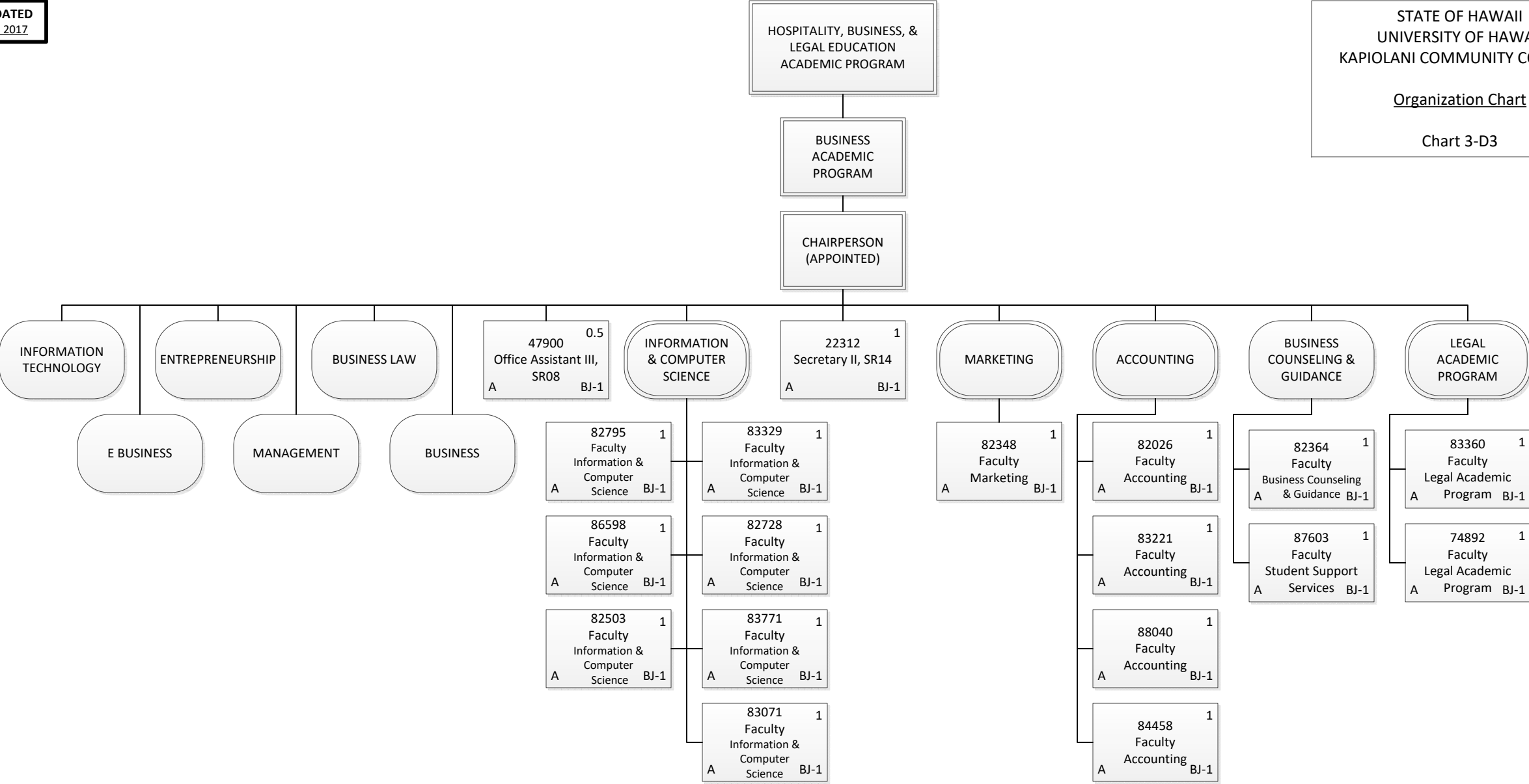
Permanent	3.00
General Funds	3.00
Temporary	1.00
General Funds	1.00
Grand Total	4.00



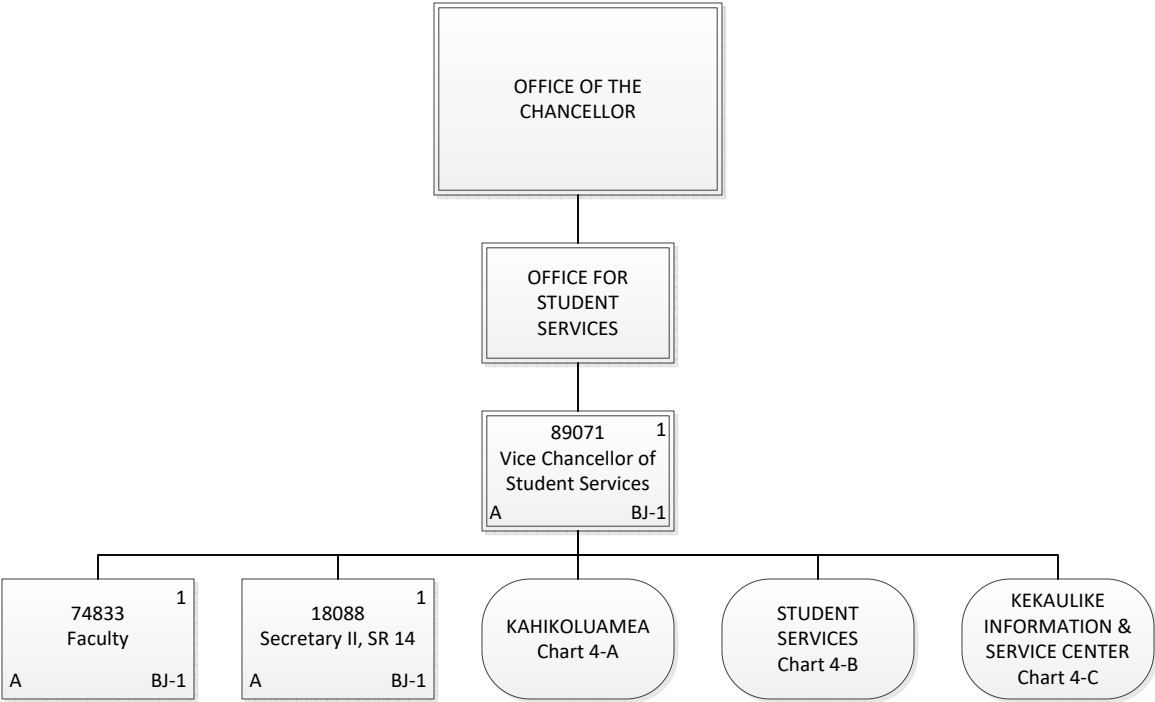
Permanent	23.00
General Funds	16.00
Special Funds	7.00
Grand Total	23.00



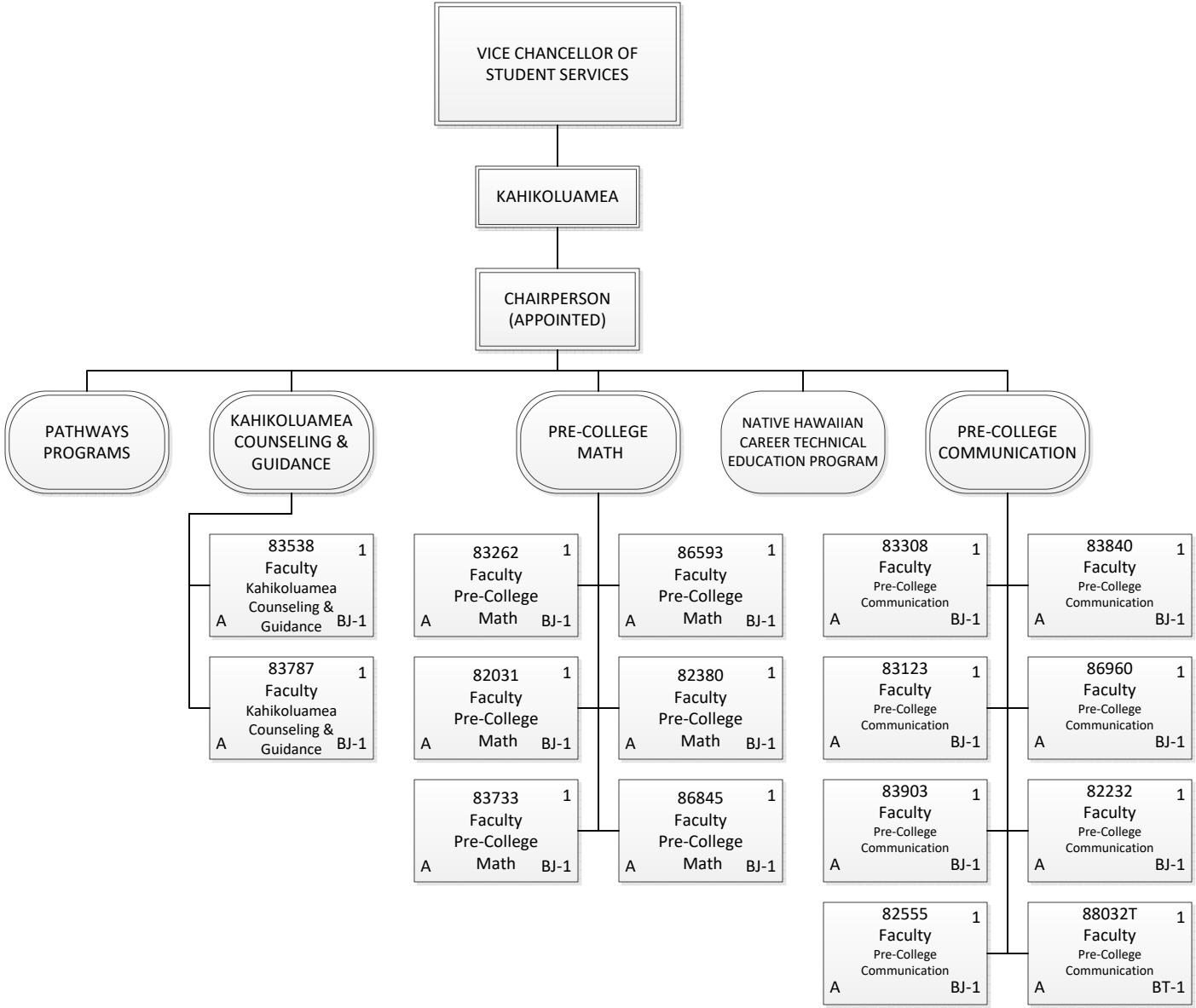
Permanent	9.00
General Funds	9.00
Grand Total	9.00



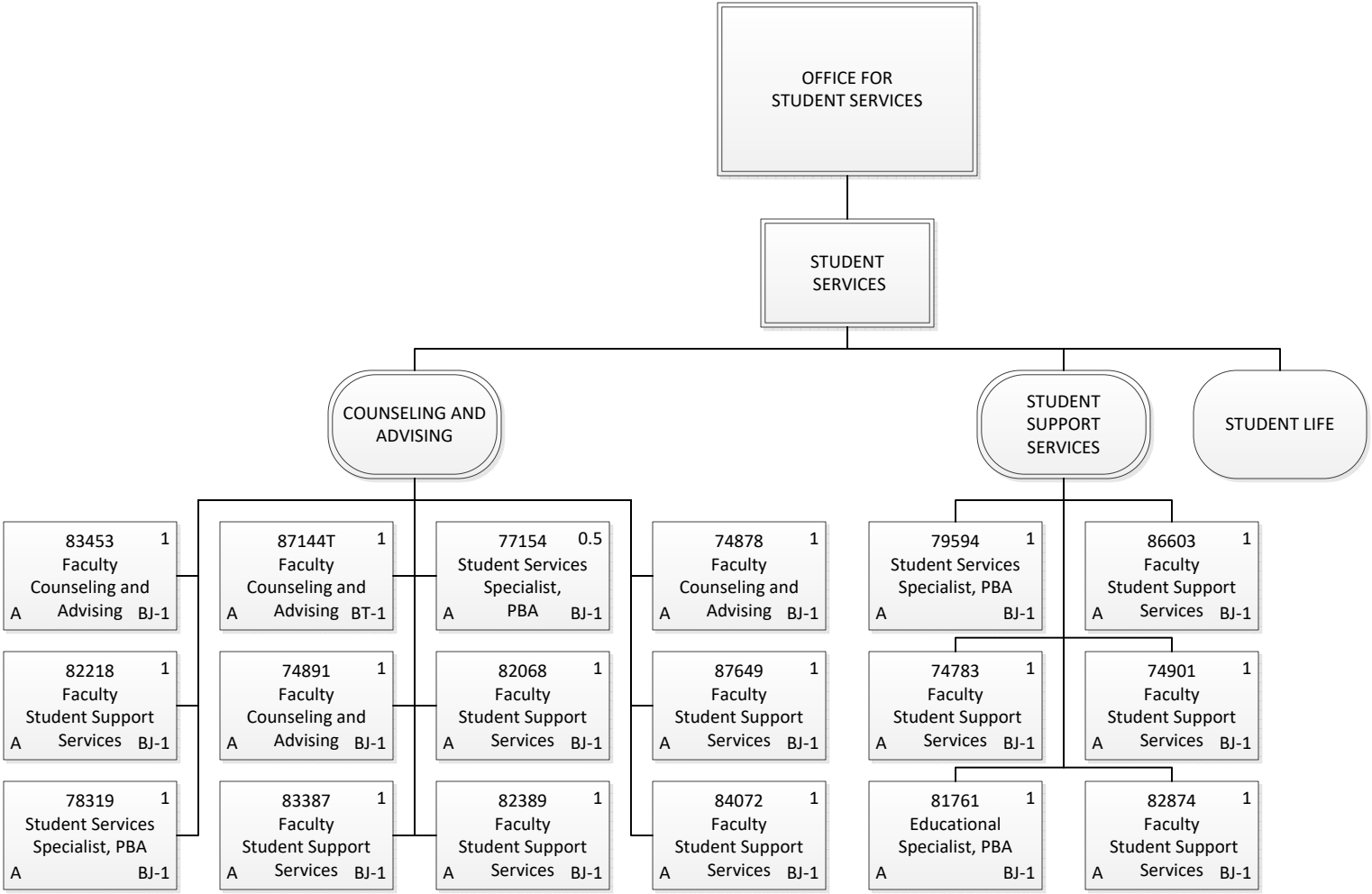
Permanent	17.50
General Funds	17.50
Grand Total	17.50



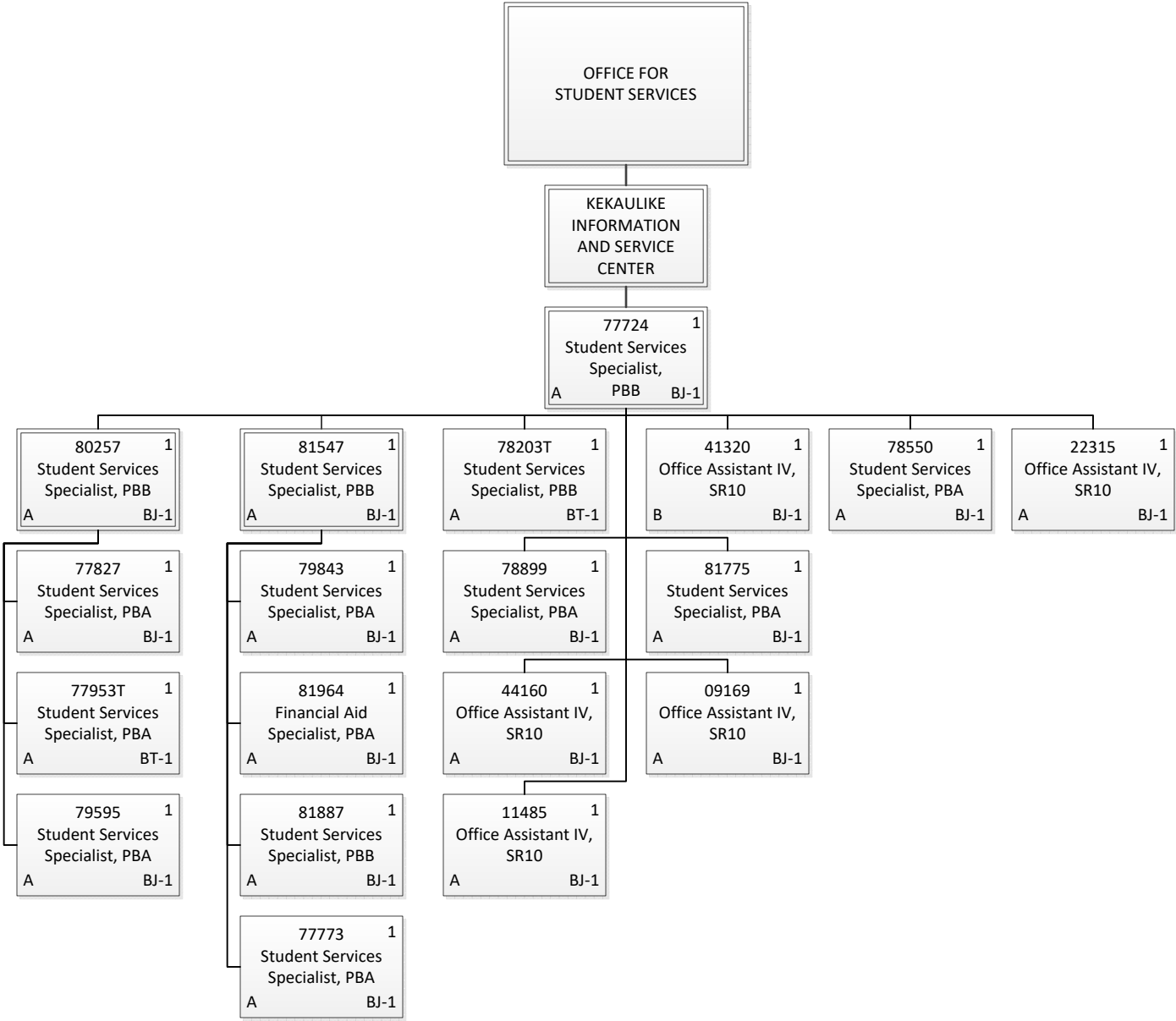
Permanent	3.00
General Funds	3.00
Grand Total	3.00



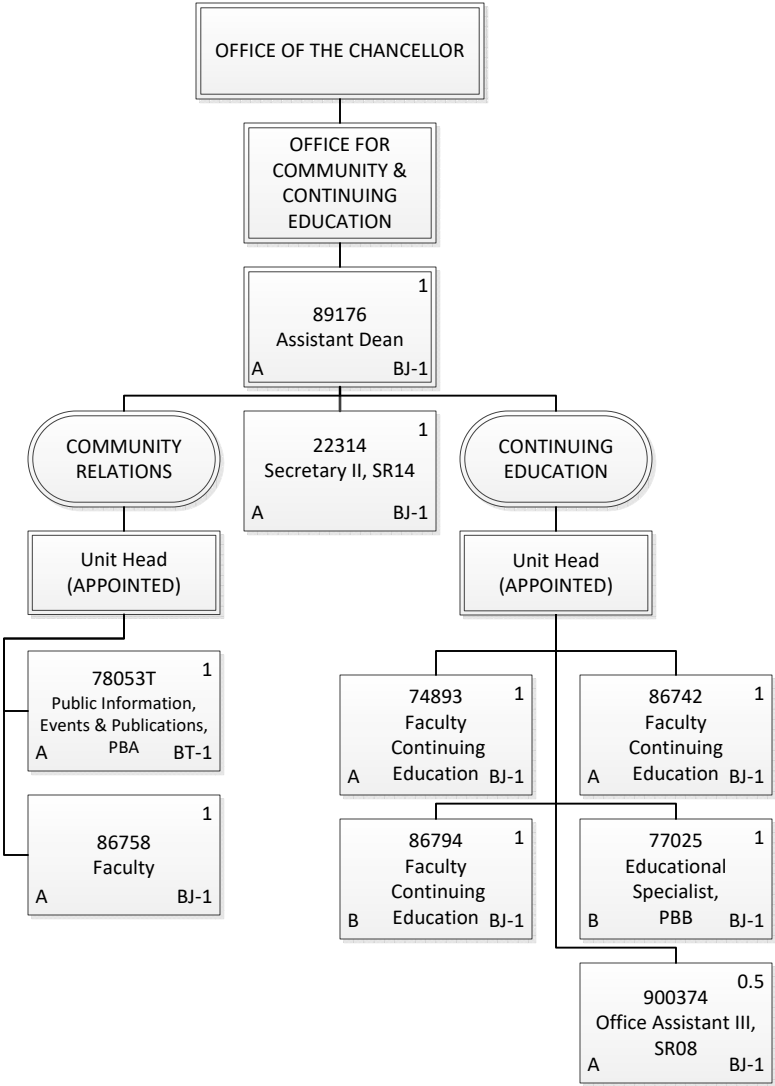
Permanent	15.00
General Funds	15.00
Temporary	1.00
General Funds	1.00
Grand Total	16.00



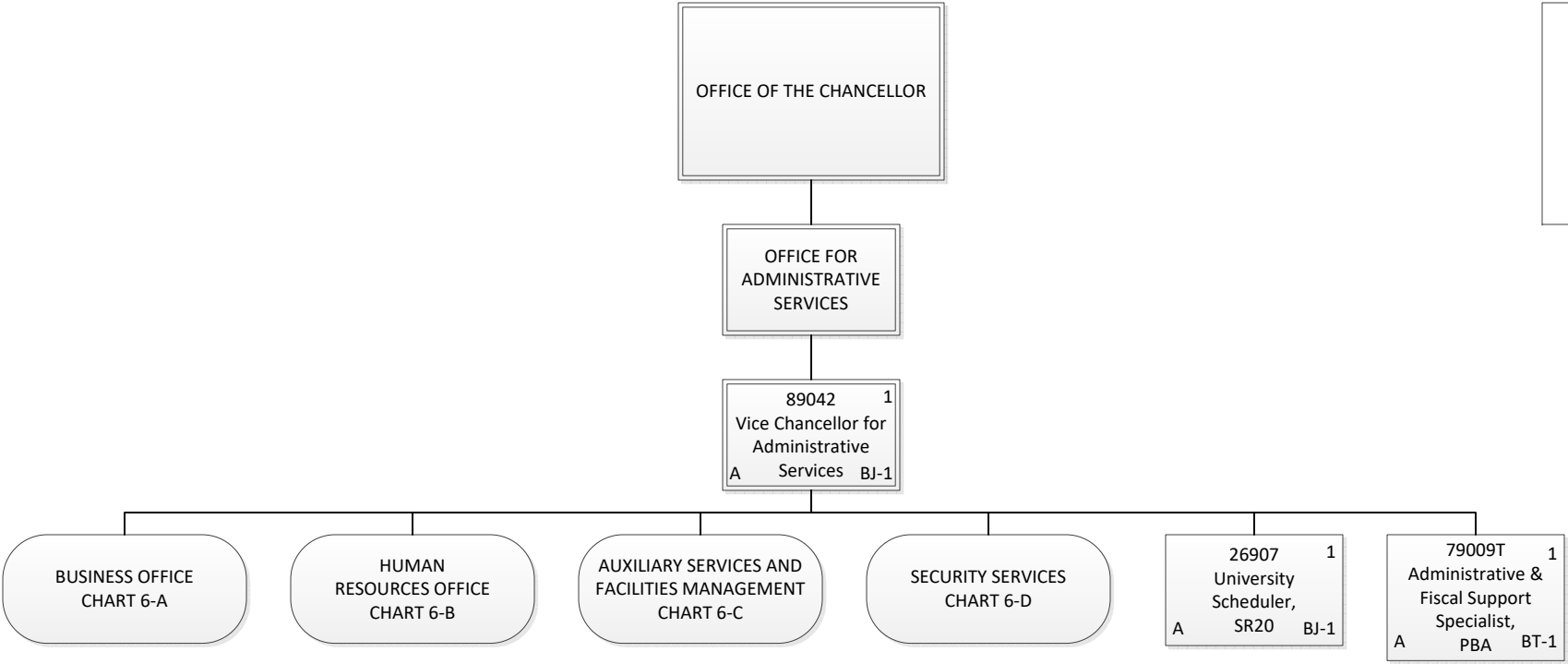
Permanent	16.50
General Funds	16.50
Temporary	1.00
General Funds	1.00
Grand Total	17.50



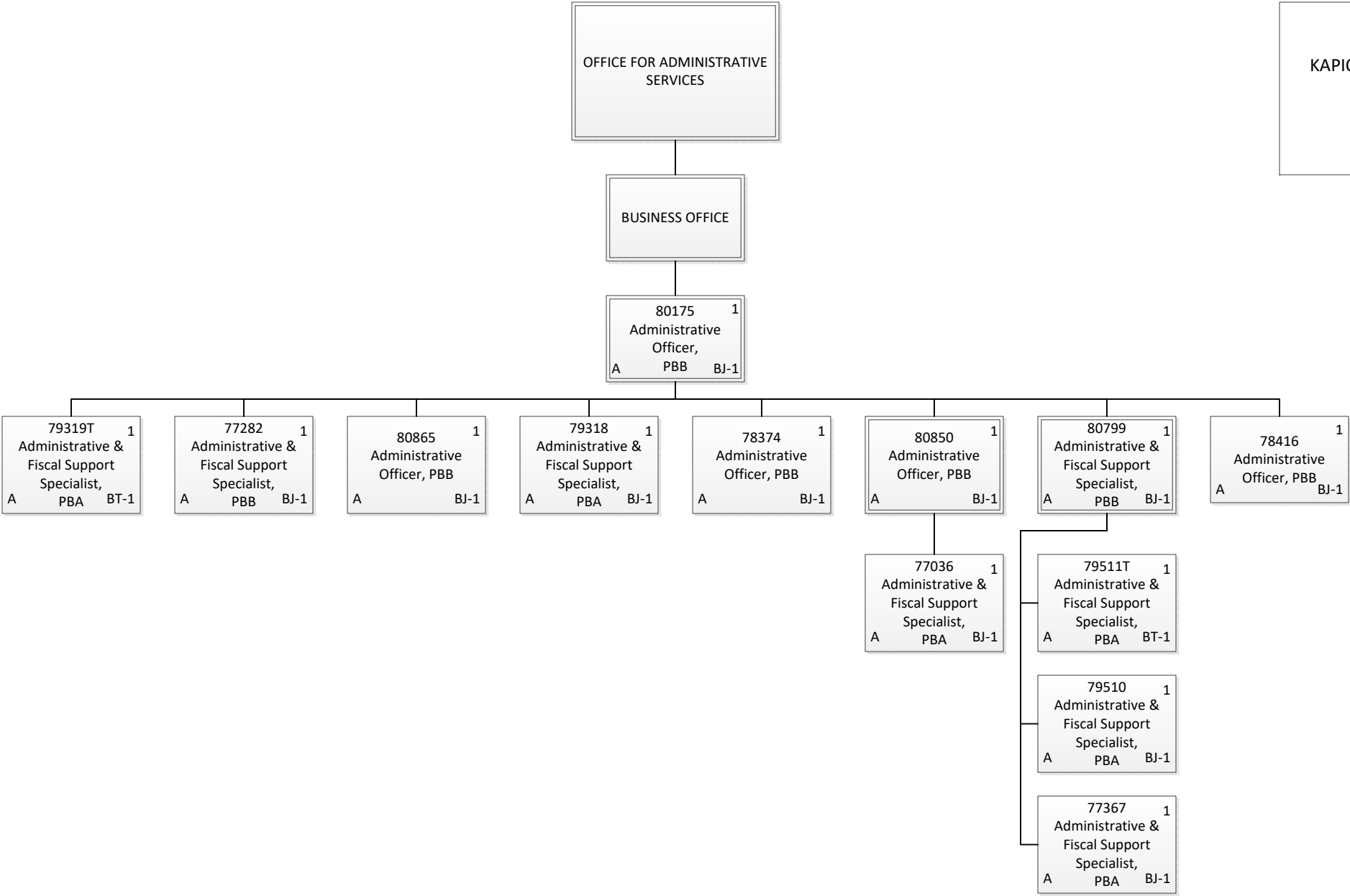
Permanent	17.00
General Funds	16.00
Special Funds	1.00
Temporary	2.00
General Funds	2.00
Grand Total	19.00



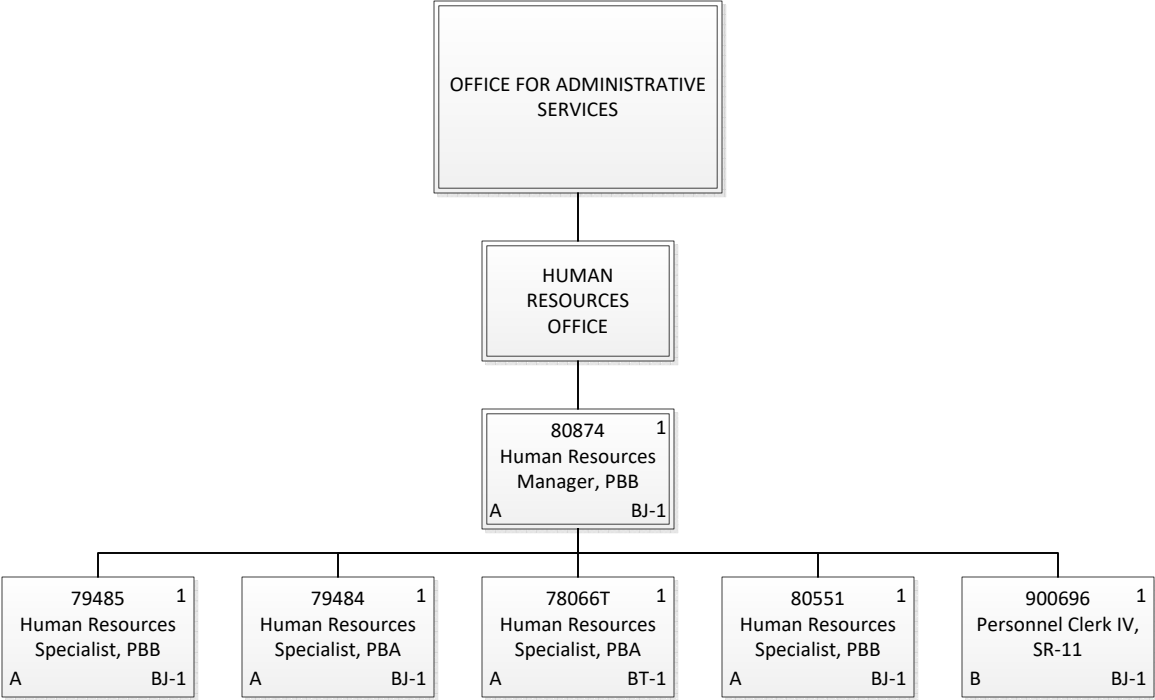
Permanent	7.50
General Funds	5.50
Special Funds	2.00
Temporary	1.00
General Funds	1.00
Grand Total	8.50



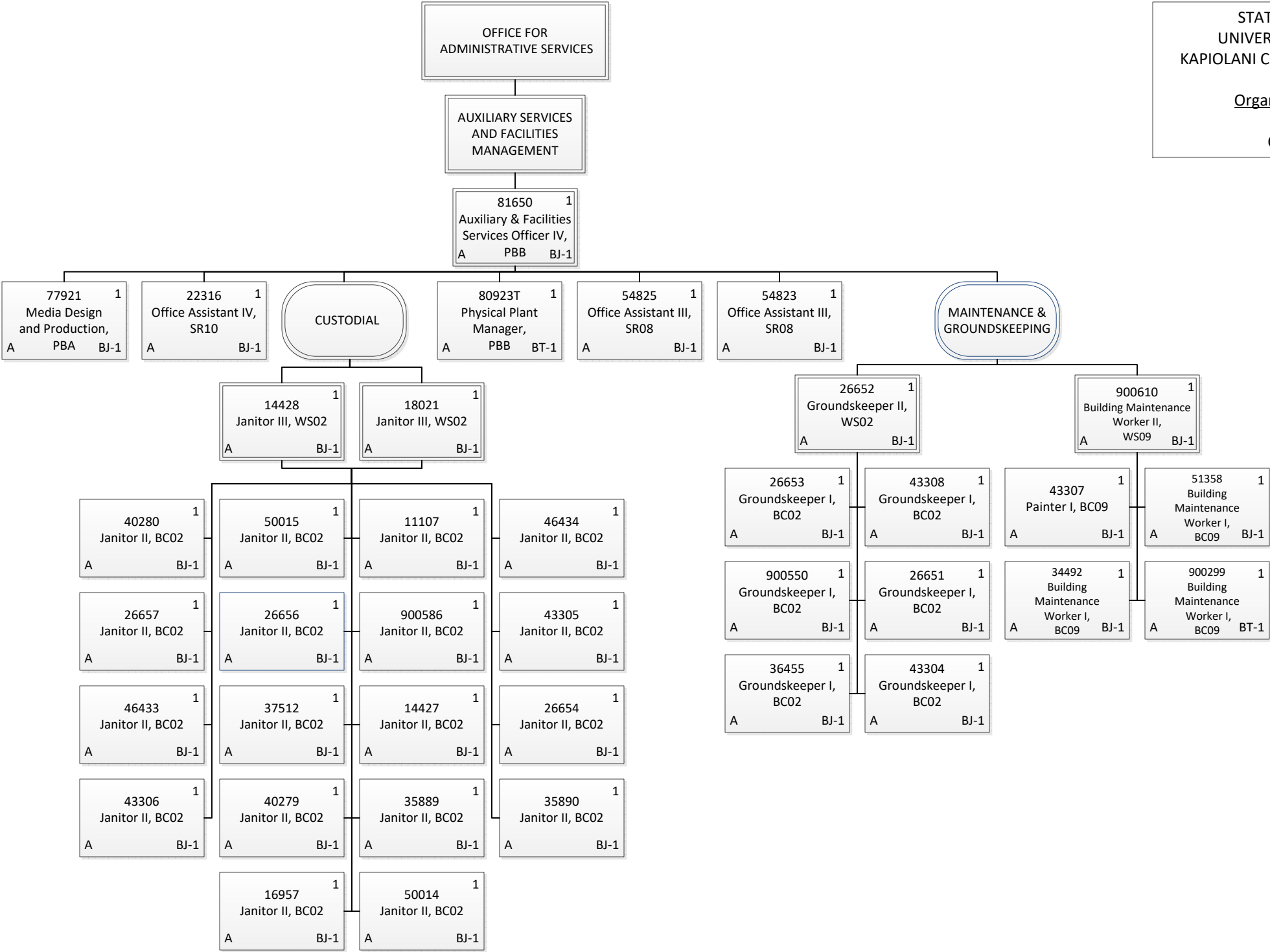
Permanent	2.00
General Funds	2.00
Temporary	1.00
General Funds	1.00
Grand Total	3.00



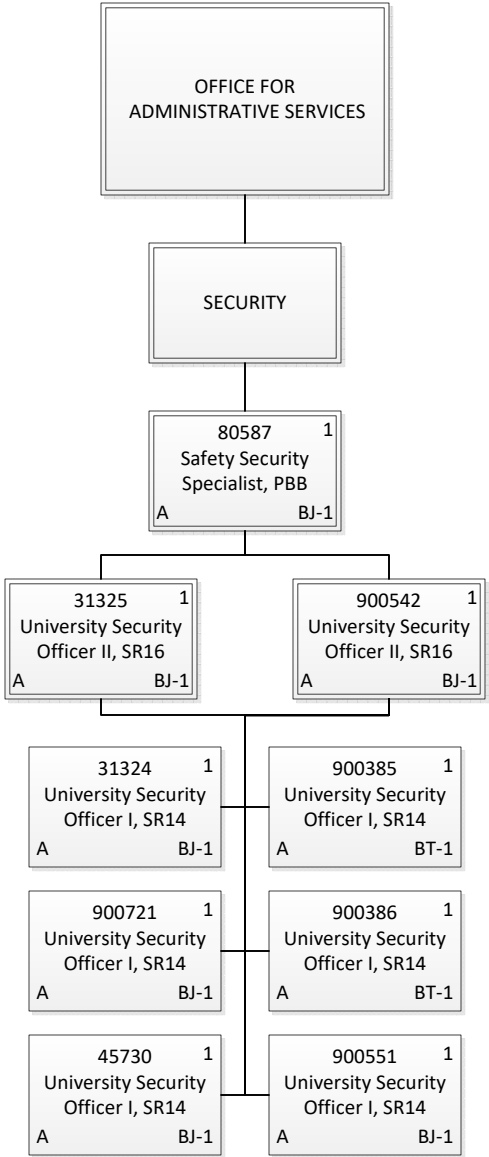
Permanent	11.00
General Funds	11.00
Temporary	2.00
General Funds	2.00
Grand Total	13.00



Permanent	5.00
General Funds	4.00
Special Funds	1.00
Temporary	1.00
General Funds	1.00
Grand Total	6.00



Permanent	36.00
General Funds	36.00
Temporary	2.00
General Funds	2.00
Grand Total	38.00



Permanent	7.00
General Funds	7.00
Temporary	2.00
General Funds	2.00
Grand Total	9.00